

Masters in Management employment report

GRADUATING CLASS OF 2023



London
Business
School

Introduction from the Head of Career Centre

I am delighted to report that 91% of students seeking employment from our 2023 graduating Masters in Management (MiM) class received an offer within three months of graduation.

This is a pleasing result given challenging employment markets. As in previous years, many of our students continue to excel in consulting careers, with nearly half year on year securing roles in this sector.

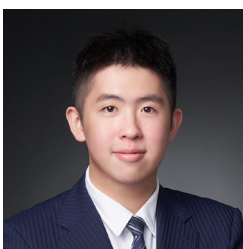
Notwithstanding the difficult environment, our graduates secured opportunities globally, albeit 47% chose to start their careers in the UK. Indeed, London Business School continues to enjoy a unique advantage in offering students the opportunity to network face-to-face with prospective employers and industry specialists across a wide range of sectors.

Whichever location, sector and company our graduates chose, we congratulate and wish them well. We equally look forward to following their progress in the years to come.



Zoe McLoughlin

Executive Director of Career Centre
London Business School



“During my time at LBS, I was able to discuss my plans and ideas through Career Coaching sessions and to make use of the MBA Peer Leader sessions to get valuable insights from peers who have worked in consulting. I was also able to attend various career fairs and employer presentations, and to connect with people in the wider LBS network. All of these interactions allowed me to gain another perspective on my career aspirations and get a better understanding of the types of roles that would be accessible post-programme.”

Andrew Lee MiM2023
Business Analyst, Arthur D. Little



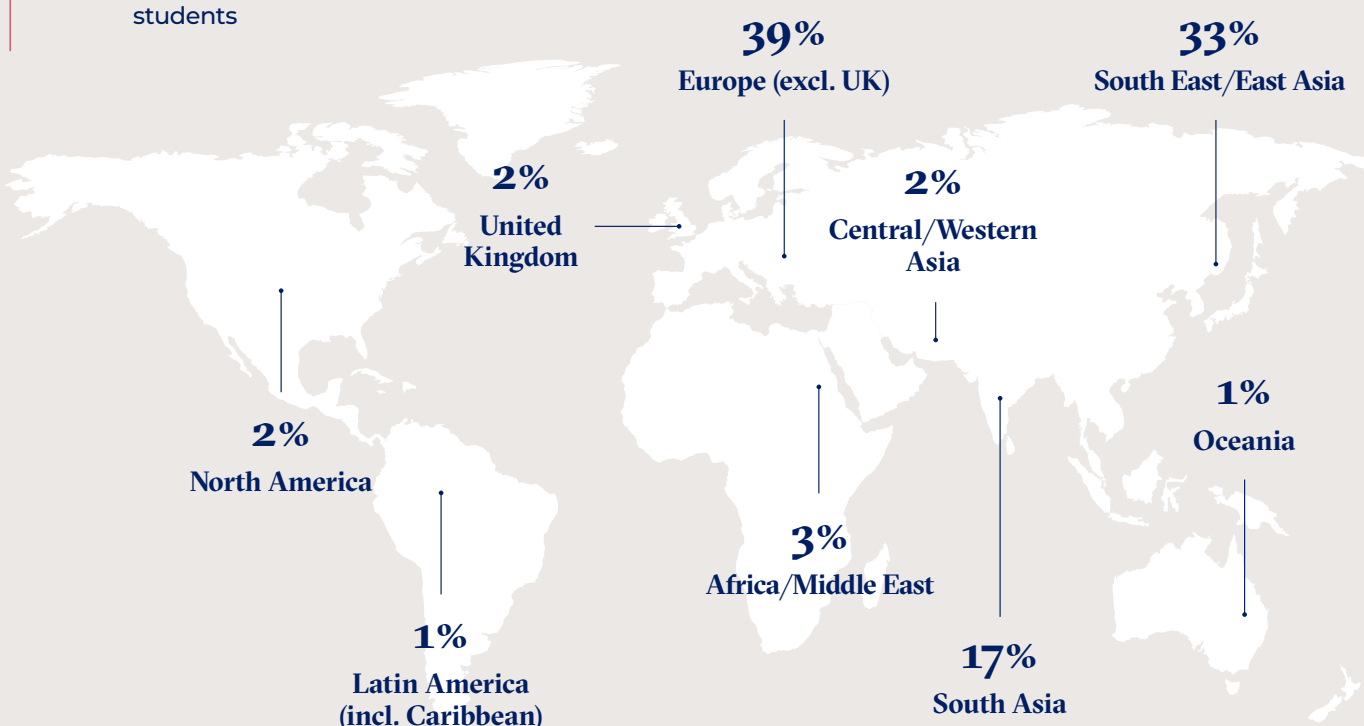
Masters in Management

Class profile

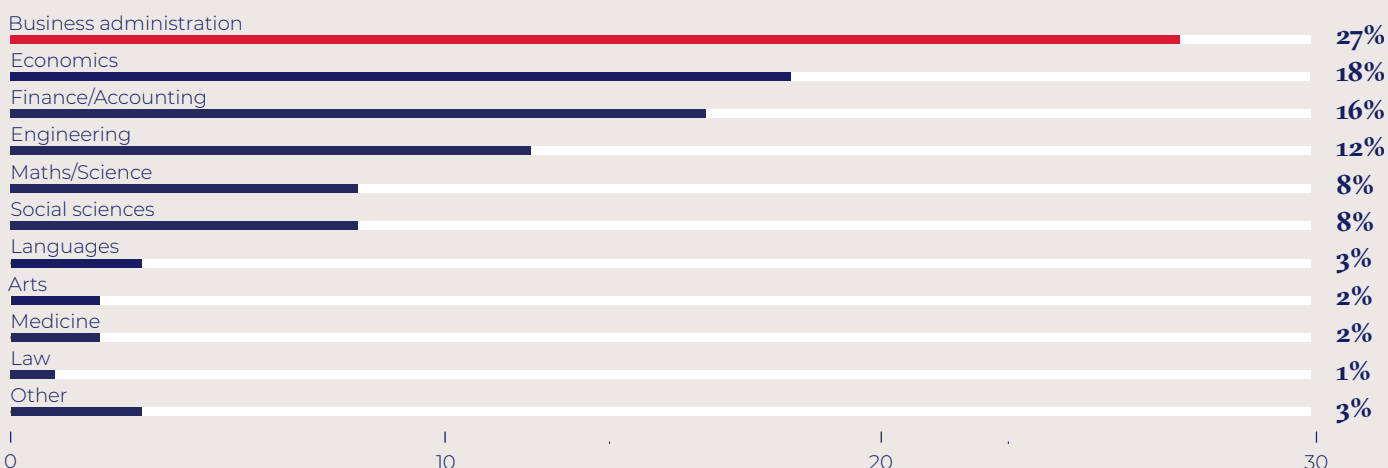
MiM2023 class profile



Regional background



Undergraduate study discipline

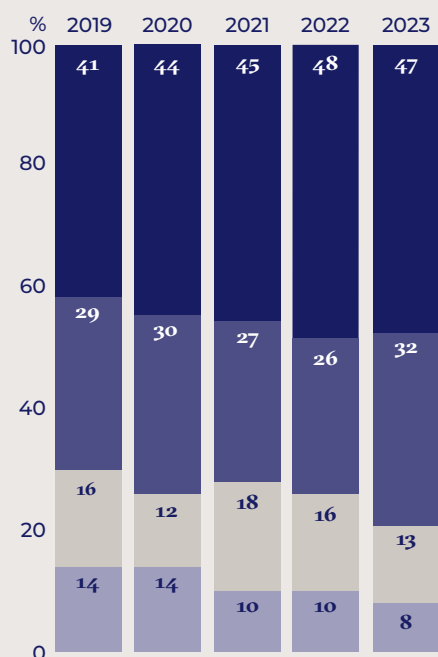


* All nationalities are self-declared.

Masters in Management

Sector destinations

Sector destinations



Sector breakdown 2023

CONSULTING	47%
FINANCE	32%
● Investment Banking	16%
● Private Equity	7%
● Investment Management	4%
● Venture Capital	3%
● Finance – Other*	2%
TECHNOLOGY	13%
● Information Technology and Services	5%
● Media	3%
● Fintech	2%
● Internet/E-Commerce	2%
● Technology – Other**	1%
DIVERSIFIED	8%
● Industrials	3%
● Energy	2%
● Healthcare	2%
● Diversified – Other***	1%

Top employers

Boston Consulting Group	12	Goldman Sachs	3
Strategy&	11	Amazon	2
Bain & Company	9	BNP Paribas	2
Kearney	6	Efficio	2
Oliver Wyman	6	Fidelity International	2
EY-Parthenon	4	Hilti	2
McKinsey & Company	4	JP Morgan Chase	2
Roland Berger Strategy Consultants	4	LGT Capital Partners	2
Advancy	3	OC&C Strategy Consultants	2
Barclays	3	Procter & Gamble	2



“What truly set the MiM experience apart were the remarkable individuals I met. From seasoned professionals to ambitious peers, their diverse perspectives and unwavering passion not only broadened my horizons but also reshaped my entire worldview. Together, we navigated challenges and forged lifelong bonds. The MiM isn’t just about education – it’s about embracing a transformative community.”

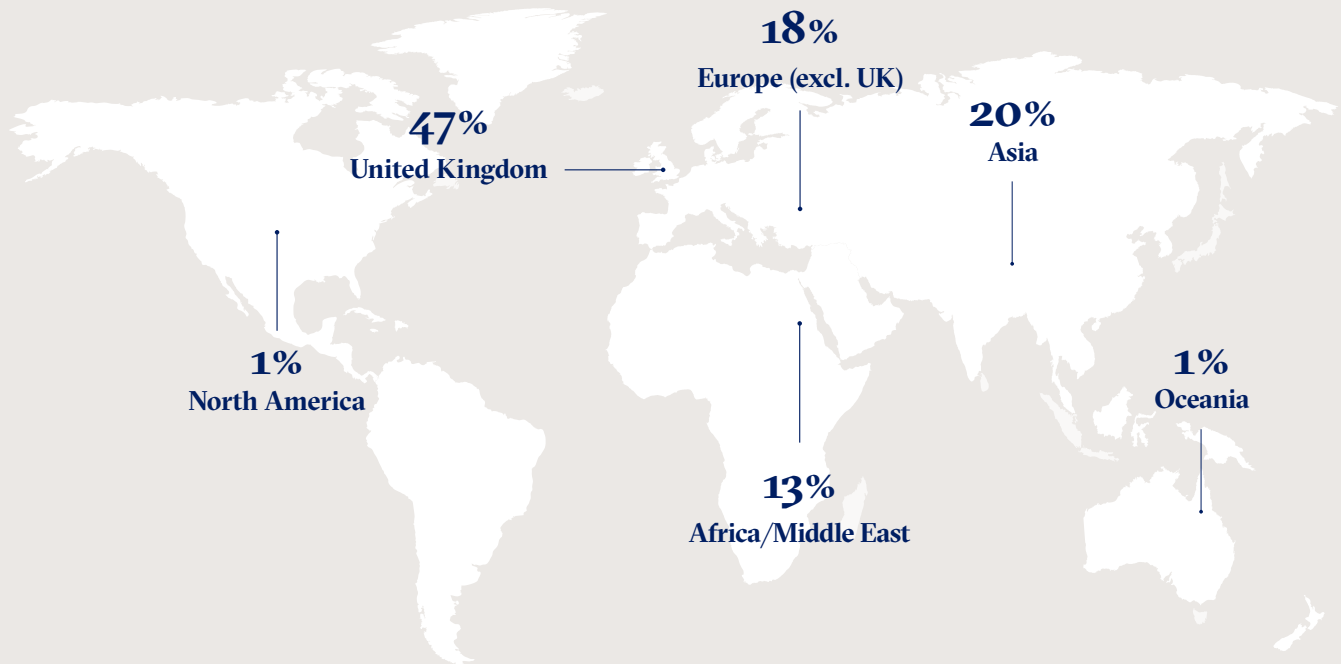
Aayush Singhal MiM2023
Associate, Strategy&

* Finance - Other: Central Banks/Ministries/Regulation/Public Finance, Retail Banking, Services & Products.

** Technology - Other: Foodtech, Healthtech.

*** Diversified - Other: Consumer & Retail.

Job location



MiM2023 graduates went to work at organisations in the following 18 locations:

- Australia
- Belgium
- Canada
- China Mainland
- France
- Germany
- Hong Kong SAR
- India
- Italy
- Poland
- Qatar
- Saudi Arabia
- Spain
- Switzerland
- Taiwan
- United Arab Emirates
- United Kingdom
- United States (USA)

Masters in Management

Salary information

Salary information by sector

Industry	UK Pounds			US Dollars*			International Dollars**		
	Min	Max	Mean	Min	Max	Mean	Min	Max	Mean
OVERALL	£4,133	£100,000	£47,159	\$5,121	\$116,892	\$58,230	\$14,123	\$220,725	\$81,194
Other compensation	£1,009	£51,000	£11,616	\$1,279	\$64,173	\$14,298	\$2,160	\$76,422	\$19,989
CONSULTING	£14,364	£86,032	£50,196	\$18,338	\$111,951	\$61,493	\$24,842	\$217,253	\$86,765
Other compensation	£1,730	£26,759	£10,865	\$2,109	\$32,559	\$13,248	\$2,749	\$53,133	\$18,794
FINANCE	£6,539	£100,000	£51,104	\$8,365	\$116,892	\$63,747	\$14,123	\$197,349	\$84,779
Other compensation	£1,009	£51,000	£16,308	\$1,279	\$64,173	\$20,317	\$2,160	\$76,422	\$26,957
TECHNOLOGY	£4,133	£43,200	£29,486	\$5,121	\$52,776	\$36,667	\$16,034	\$62,850	\$46,969
Other compensation	£1,240	£10,000	£4,946	\$1,536	\$12,474	\$6,156	\$4,202	\$17,098	\$8,950
DIVERSIFIED	£18,671	£51,750	£36,110	\$23,465	\$64,451	\$44,866	\$39,617	\$220,725	\$76,009
Other compensation	£3,800	£15,000	£7,392	\$4,745	\$18,376	\$9,154	\$5,651	\$31,894	\$15,256

67%

of our students who accepted an offer received other compensation/bonuses

Salary information by location

Location***	UK Pounds			US Dollars*			International Dollars**		
	Min	Max	Mean	Min	Max	Mean	Min	Max	Mean
OVERALL	£4,133	£100,000	£47,159	\$5,121	\$116,892	\$58,230	\$14,123	\$220,725	\$81,194
Other compensation	£1,009	£51,000	£11,616	\$1,279	\$64,173	\$14,298	\$2,160	\$76,422	\$19,989
Africa/Middle East	£46,486	£86,032	£59,612	\$55,276	\$111,951	\$72,976	\$91,208	\$217,253	\$120,677
Other compensation	£2,469	£26,759	£14,615	\$2,995	\$32,559	\$17,949	\$4,887	\$53,133	\$29,110
Asia	£4,133	£100,000	£39,780	\$5,121	\$116,892	\$48,653	\$14,123	\$220,725	\$90,277
Other compensation	£1,009	£30,000	£9,453	\$1,279	\$35,068	\$11,374	\$2,160	\$59,205	\$20,196
Europe	£9,528	£69,208	£41,256	\$11,836	\$86,495	\$51,798	\$16,034	\$125,193	\$69,602
Other compensation	£1,730	£10,762	£6,228	\$2,109	\$14,055	\$7,946	\$2,749	\$18,326	\$10,537
UK	£24,383	£75,000	£48,327	\$29,870	\$92,413	\$59,884	\$35,572	\$110,053	\$71,315
Other compensation	£2,000	£51,000	£12,466	\$2,517	\$64,173	\$15,505	\$2,997	\$76,422	\$18,465

* Conversion rates as per date of offer.

** Purchasing power parity (PPP) included due to the high number of students who have salaries in non-US dollar currencies. The World Bank's implied PPP rate of exchange was used to equalise the purchasing power across economies.

*** Insufficient data points to report salary data for North America and Oceania.

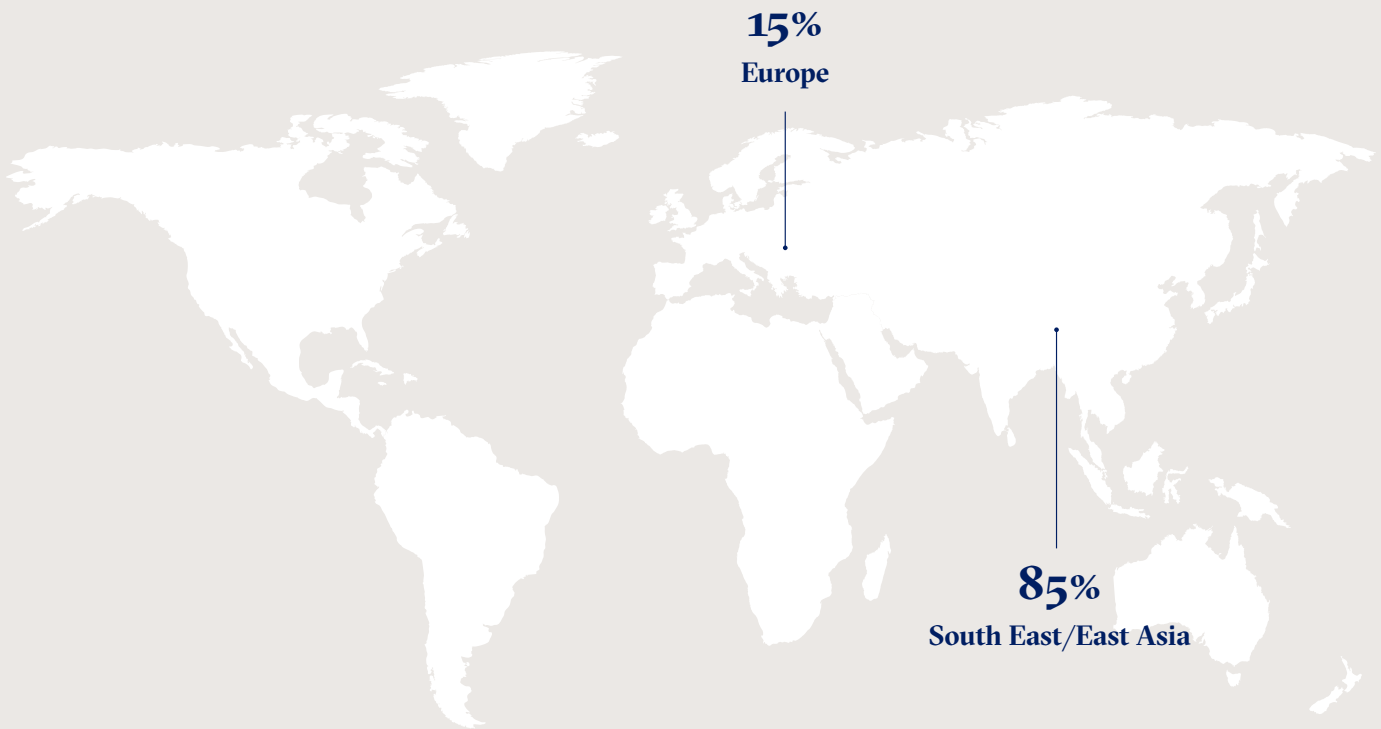
Other compensation includes sign-on and end-of-year bonus, where we have sufficient data. Salary data does not include sponsored or self-employed students, in accordance with MBA CSEA guidelines.

Class profile

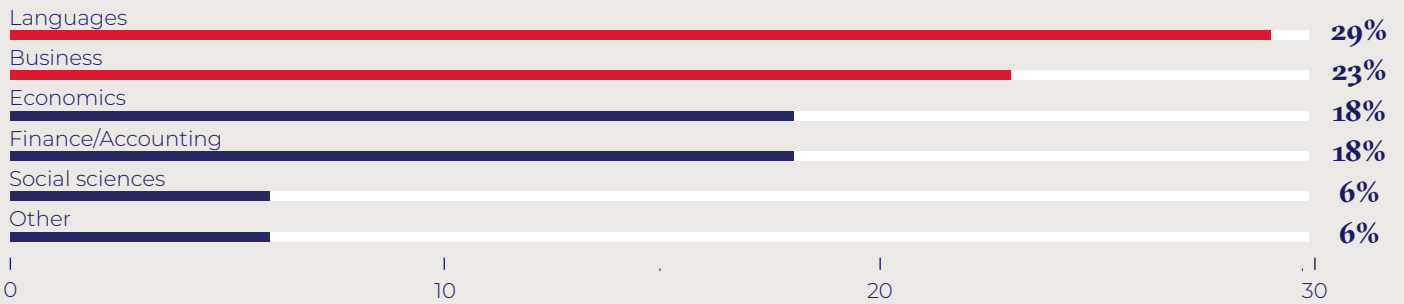
GMiM2023 class profile



Regional background



Undergraduate study discipline



* All nationalities are self-declared.

GMiM2023 employment statistics

Sector destinations

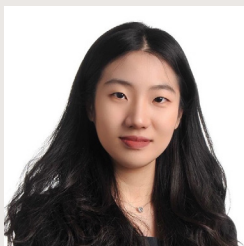
94%
accepted an offer
within three months
of graduation

90%
Reporting rate

CONSULTING	43%
FINANCE	57%
● Securities/Investment Banking	43%
● Asset Management	7%
● Venture Capital/Private Equity	7%

Job location

100%
Asia



“The GMiM programme has broadened my perspective in numerous ways, notably by fostering a sense of global citizenship. It provided a great opportunity to understand diverse cultural mindsets and allowed me to cultivate the skills necessary for effective cross-border collaboration. The Career Centre played an instrumental role in my career development, offering invaluable support in interview preparations, helping me unearth my true passions and facilitating connections with the alumni network. Their guidance has been pivotal in shaping my professional path.”

Yuting Huang GMiM2023
Rotational Analyst, CPP Investments (CPPIB)

Hiring companies

MiM

3HORIZONS
 Advancy
 AI Forge
 AlixPartners
 AlphaSights
 Altai Consulting
 Amazon
 Amber Capital
 Arma Partners
 Artefact
 Arthur D. Little
 Aulusius
 Barclays
 BearingPoint
 Blackstone
 BNP Paribas
 Boehringer-Ingelheim
 Boost Consulting
 Boston Consulting Group
 bp
 Brahmaputra Infrastructure Ltd
 Brandes Investment Partners
 Briarwood Partners
 Broad Vision Funds
 Cairneagle Associates
 CASE Corporate Finance
 Cathay Financial Holdings
 Centrium Capital
 CICC
 Clearstream Deutsche Börse
 CMB International
 Credit Agricole
 Deutsche Bank
 Deutsche Borse Group
 Domo
 Dyson
 Eastdil Secured
 Efficio
 Essence Securities
 Eurazeo
 EY-Parthenon
 Fide Partners
 Fidelity International
 Founders Future

Gartner
 Glenmont Partners by Nuveen
 Grant Thornton
 HelloFresh
 Hilti
 Huatai United Securities
 Hyperithm
 iBanFirst
 IBM
 Integration Management Consulting
 Irbis Capital Ltd.
 Iroko Securities
 J.P. Morgan
 Jellyfish Pictures
 Johnson & Johnson
 JP Morgan Chase
 Jung von Matt
 KKR
 Kolleno
 Konark Petroleum Pvt Ltd
 KPMG
 Kuwait Investment Authority
 Lakera
 LGT Capital Partners
 M80 Partners
 Matson Driscoll & Damico UK LLP
 Mazars
 McKinsey & Company
 MENA Moonshots
 Mihoyo Technology
 Nationwide Building Society
 Newfund
 Newton Europe
 OC&C Strategy Consultants
 OCBC Bank
 Ocean Link
 Oliver Wyman
 Pearson Ham
 Pi Labs
 PLIM
 Procter & Gamble
 PwC
 Roland Berger Strategy Consultants
 Rothschild & Co.

Rumeur Publique
 RVU
 S&P Global
 Schneider Electric
 Sia Partners
 Simon-Kucher & Partners
 SomX
 Strategic Analytics
 Strategy&
 StratOp Group
 Suade Labs
 The Walt Disney Company
 TowerBrook
 UBS
 vivo Communication Technology Co. Ltd.
 YunFeng Capital

GMiM

CPPIB
 Credit Suisse
 D. E. Shaw
 Enterprise Singapore
 General Atlantic
 Siemens
 ZS Associates

MiM and GMiM

Bain & Company
 BofA Securities
 Citi Bank
 Goldman Sachs
 Kearney
 Morgan Stanley

About the Career Centre

We want our students to develop skills, behaviours and strategies to manage their careers proactively. Our Career Centre experts support students as they shape their career goals.

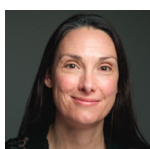
Our comprehensive career support involves:

- **Career coaching and advising.** Coaches help you define a direction and maintain focus on your goals. Our sector advisors provide sector-specific advice to deepen your own research and share market trends.
- **Career learning.** A blended digital and in-person curriculum to move students' career skills to the next level, to affect career progression.
- **Career opportunities.** Access to a wide range of career and networking opportunities, including over 200 employer events annually.

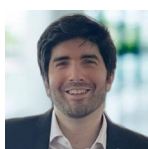


Specialist coaches and career advisors

The Career Centre comprises 45 permanent staff, most of whom have real-world coaching and commercial experience to help students achieve their career goals. Team members include:



Kira Hughes
Head of Graduate
Masters Careers



Osman Haneff
Institute of
Entrepreneurship
and Private Capital



Daniel Lay
Head of Consulting
Careers



David Morris
Head of Technology
and Media Careers



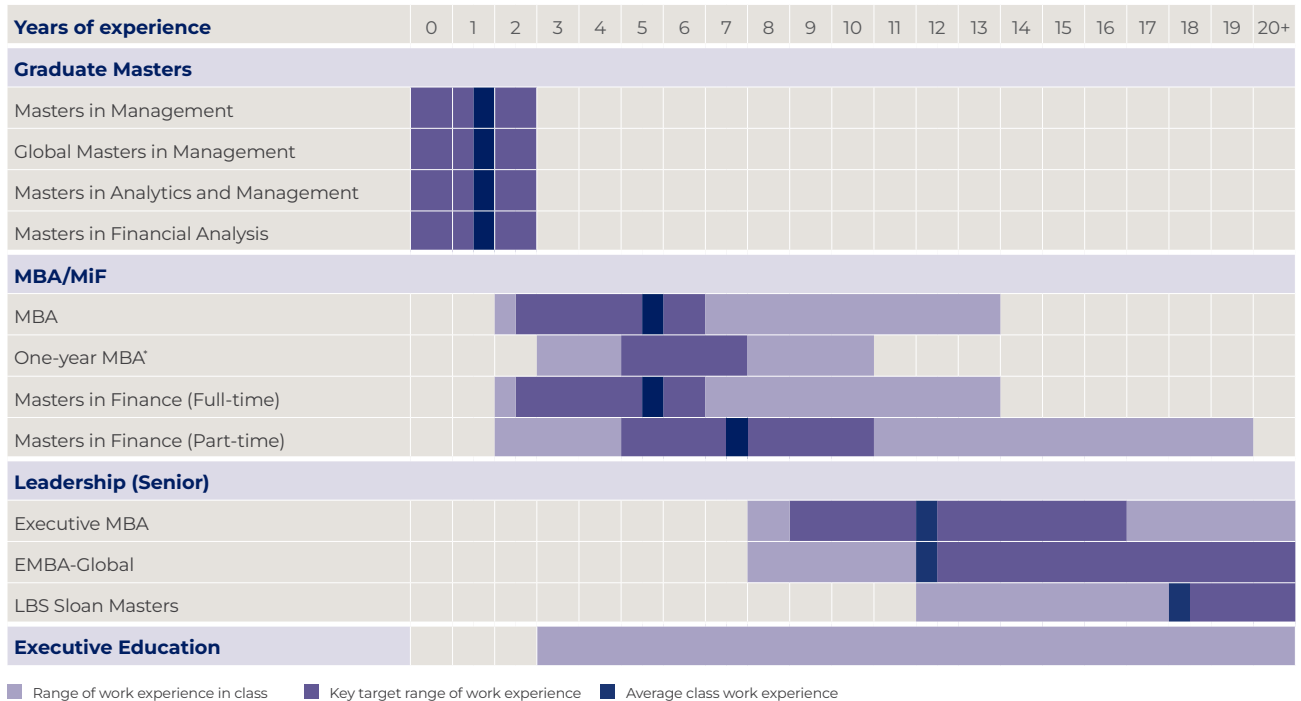
Richard Bland
Head of Finance
Careers



Alyona Segline
Head of Diversified
Careers

Our programmes

London Business School can boost your capabilities and potential at every stage of your career.



* Available to those who have graduated three or more years ago with a Masters in Management or equivalent approved by EQUIS and/or AACSB or from the University of London.

Graduate Masters

Masters in Management

12-16 MONTHS | FULL-TIME | LONDON

For recent graduates with up to two years of full-time postgraduate work experience who want to kick-start a career in business.

Global Masters in Management

24 MONTHS | FULL-TIME | LONDON AND SHANGHAI

For recent graduates with up to two years of full-time postgraduate work experience. Strong interest in Asia and knowledge of Mandarin highly recommended, but not mandatory.

Masters in Analytics and Management

12-16 MONTHS | FULL-TIME | LONDON

For recent graduates with up to two years of postgraduate work experience, who are targeting a career in business and data analytics.

Masters in Financial Analysis

12-16 MONTHS | FULL-TIME | LONDON

For recent graduates with up to two years of full-time postgraduate work experience who are looking to embark on a career in finance.

Mid Career

MBA

15-21 MONTHS | FULL-TIME | LONDON

For individuals who are looking to make a vertical shift in their career path, change industry or job function, or develop an entrepreneurial toolkit.

One-year MBA

11 MONTHS | FULL-TIME | LONDON

For professionals with a masters in management looking to further their careers and take their entrepreneurial ideas further.

Masters in Finance (Full-time)

10-16 MONTHS | FULL-TIME | LONDON

For experienced financial professionals wishing to advance their career or change their area within finance.

Masters in Finance (Part-time)

22 MONTHS | PART-TIME | LONDON

For experienced financial professionals looking to further their career while still working.

Leadership (Senior)

Executive MBA

20 MONTHS | PART-TIME | LONDON OR DUBAI

Designed for those who want to accelerate their career into general management or move beyond their technical or functional specialism.

EMBA-Global

20 MONTHS | PART-TIME | LONDON AND NEW YORK

For dynamic, mid-career managers and professionals who are highly ambitious and have, or aspire to have, transnational responsibilities.

LBS Sloan Masters in Leadership and Strategy

12 MONTHS | FULL-TIME | LONDON

Designed to prepare experienced senior managers for their next career challenge.

Find out more

Masters Programmes

+44 (0)20 7000 7500
masters@london.edu

Executive Education

+44 (0)20 7000 7390
execinfo@london.edu

All admissions decisions are taken in accordance with best equal opportunities practice.

London
Business
School

London Business School
Regent's Park
London NW1 4SA
United Kingdom
Tel: +44 (0)20 7000 7000
london.edu

london.edu/mim
london.edu/gmim