

# Masters in Analytics and Management Employment Report

GRADUATING CLASS OF 2024

London  
Business  
School



## Introduction from the Head of Career Centre

I am delighted to share that 91% of our 2024 Masters in Analytics and Management (MAM) class secured an offer within three months of graduation — an outstanding achievement in today's dynamic and highly competitive global job market.

Technology was the leading hiring sector, attracting 35% of our graduates and highlighting the sustained demand for their expertise in data-driven decision-making, AI and digital transformation. Consulting also remained a key destination, with employers valuing the holistic business perspective and interpersonal strengths that our graduates bring.

Our global perspective continues to be a significant advantage, enabling students to secure roles across international markets. At the same time, 38% of graduates have chosen to advance their careers in London, reflecting the city's status as a world-leading financial and business hub with unparalleled professional opportunities.

A London Business School education is more than a degree — it's a transformative experience that equips students with the knowledge, networks and skills to thrive. Whether launching their career or taking the next step in their professional journey, our graduates are prepared to excel in an ever-evolving world. We are incredibly proud of their achievements and look forward to celebrating their continued success in the years ahead.



**Zoe McLoughlin**

Executive Director of Career Centre  
London Business School



**“The MAM programme gave me the confidence to approach problems creatively and apply theory to real-world challenges. It strengthened my teamwork and adaptability — key skills in improving how we handle data daily. Being in a multicultural environment broadened my perspective, while the LBS Career Centre provided invaluable guidance, both during and after the programme. Their support has been instrumental as I navigate new career challenges.”**

**Barbara Merck** MAM2024  
Head of Data Analysis, Quick Shipping and Quick Box USA

## MAM2024 class profile



**89**  
students



**29**  
nationalities\*



**42%**  
female



**23**  
average  
age (years)

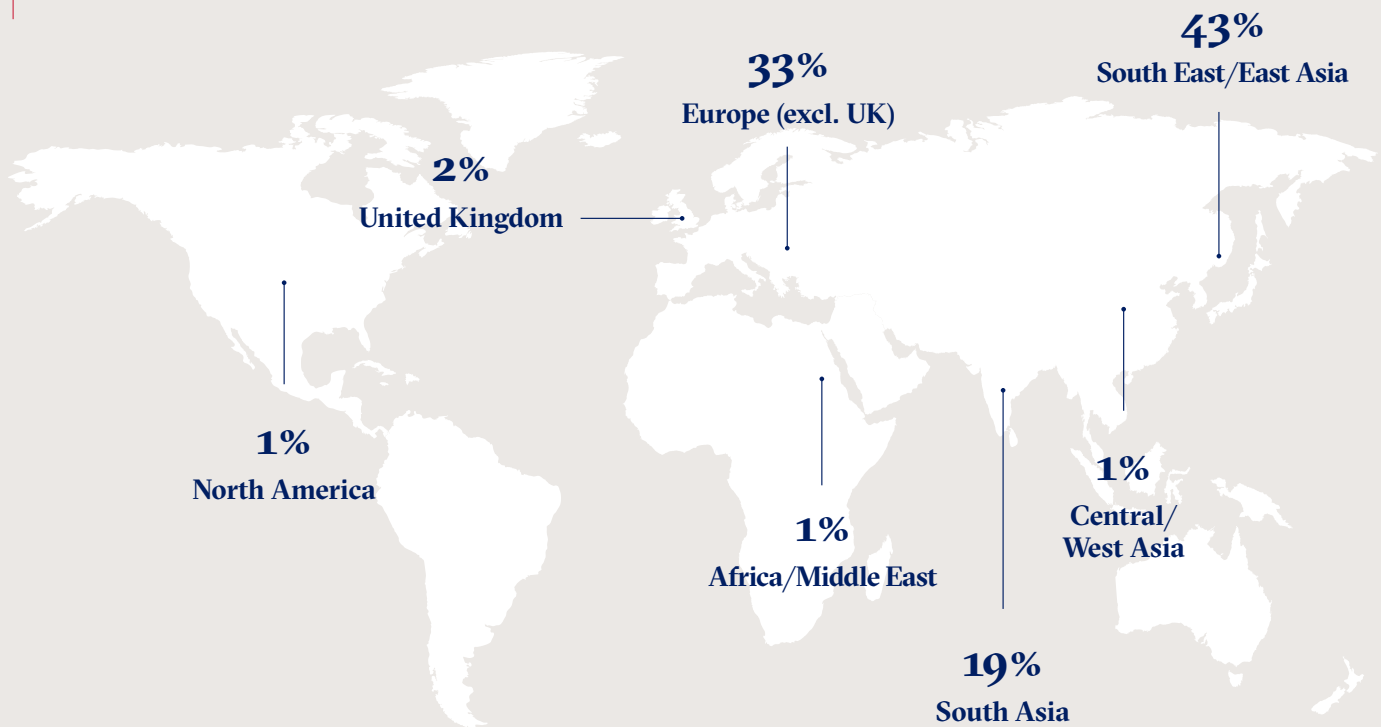


**699**  
GMAT score  
(average)

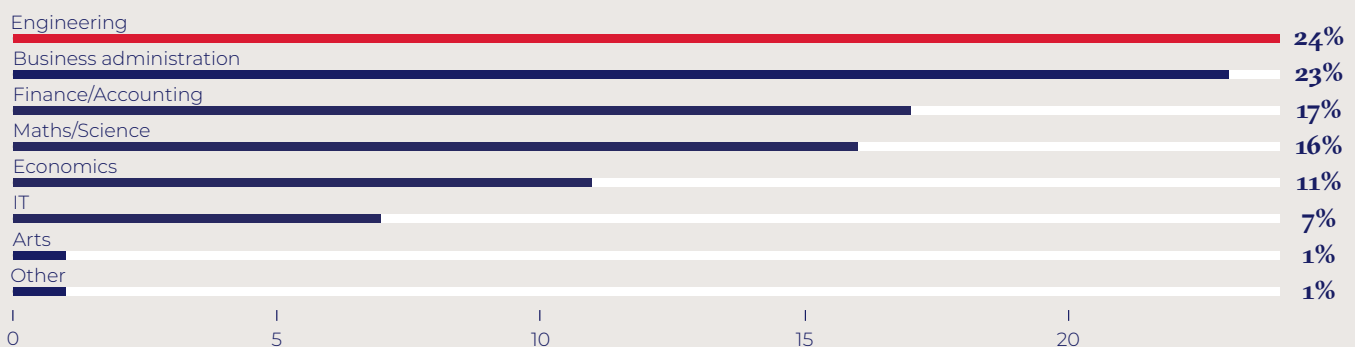
### Regional background



**98%**  
international  
students

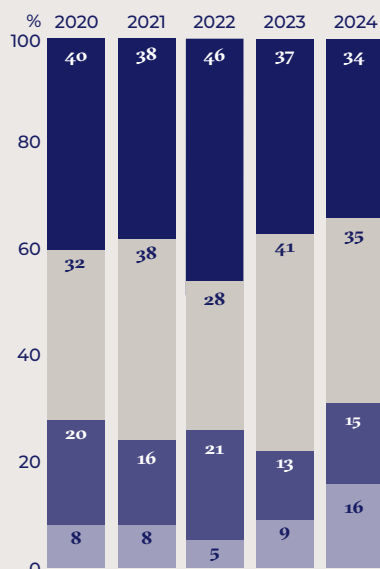


### Undergraduate study discipline



\* All nationalities are self-declared.

## Sector destinations



### Sector breakdown 2024

<b>CONSULTING</b>	<b>34%</b>
<b>TECHNOLOGY</b>	<b>35%</b>
● Information Technology	16%
● Fintech	10%
● Media	4%
● Internet/eCommerce	3%
● Healthtech	2%
<b>FINANCE</b>	<b>15%</b>
● Investment Banking	6%
● Venture Capital	3%
● Insurance and Pension Services	1.5%
● Investment Management	1.5%
● Private Equity	1.5%
● Retail Banking	1.5%
<b>DIVERSIFIED</b>	<b>16%</b>
● Industrials	6%
● Consumer and Retail	3%
● Energy	3%
● Healthcare	3%
● Sports	1%

### Hiring companies

3Shape

Accenture

Amazon

AnyVan

Assembly

Aulusius

Bain &amp; Company

Bank of America

BearingPoint

Bilibili

Bluecrux

Boston Consulting Group

Canonical

Capgemini Consulting

Capital One

Celonis

Christian Dior

CLSA

DealStack

Doctolib

EY

Fairview Capital Group

Farfetch

Goldman Sachs

Harrods

IBM

IQVIA

IRIS

Iwoca

Kearney

Mastercard

McKinsey &amp; Company

Muang Thai Insurance PCL

National Basketball Association (NBA)

Nomura Asset Management

OC&amp;C Strategy Consultants

Oliver Wyman

Plaud AI

PMP Strategy

Quick Shipping

RAKBANK

Reazon Capital

Roland Berger

Singapore Airlines

Statkraft

Strategy&amp;

Syensqo

Teneo

The Economist

Therminer

TikTok

U-Reg

Uber

Verdigris Strategic Ltd

Wise

Workhuman

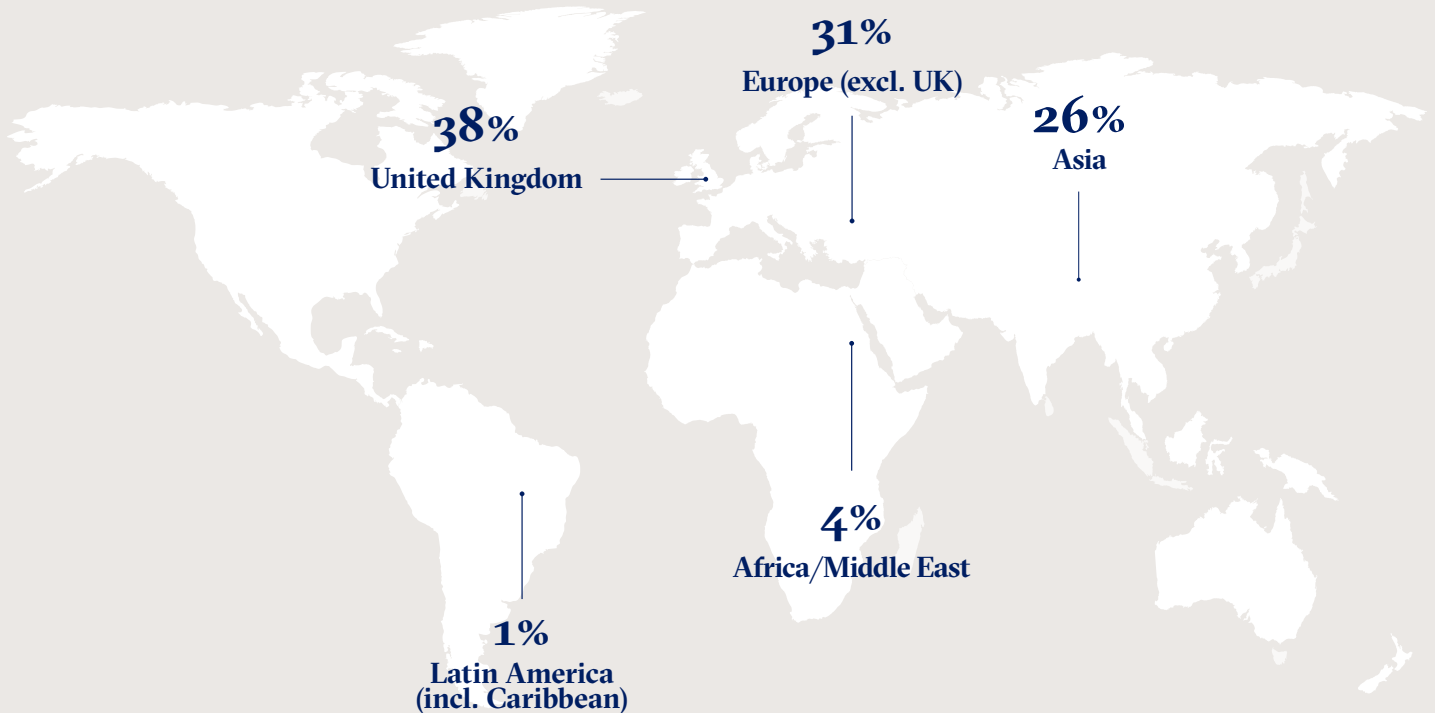
Zopa

### Examples of job titles

- Analyst
- Assistant Vice President
- Associate Consultant
- Brand Specialist
- Business Analyst
- Business Intelligence Engineer
- Business Strategy Analyst
- Consultant
- Credit and Commercial Analyst
- Data Analyst
- Data Scientist
- Head of Data
- Investment Analyst
- Product Manager

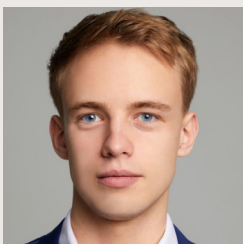
Both sector destination and location destination information include sponsored students to best represent the choices our graduates make.

## Job location



### MAM2024 graduates went on to work at organisations in the following 21 locations:

- Belgium
- China Mainland
- Denmark
- France
- Germany
- Guatemala
- Hong Kong SAR
- India
- Ireland
- Japan
- Netherlands
- Qatar
- Singapore
- Spain
- Sweden
- Switzerland
- Taiwan
- Thailand
- United Arab Emirates
- United Kingdom
- Vietnam



**“The MAM provided the perfect platform to develop a deep expertise in data and AI while strengthening a business-minded, strategic perspective. Today, I confidently lead AI-driven initiatives, managing a team of software and AI engineers at a fast-growing fintech startup in Singapore. The programme’s holistic curriculum, valuable connections, and hands-on experiences enabled me to successfully navigate the dynamic AI landscape and drive innovation in financial technology.”**

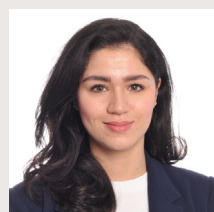
**Jean Zwerger** MAM2024  
Product Manager, Data & AI, U-Reg

## Salary information by industry

Industry	UK Pounds			US Dollars*			International Dollars**		
	Min	Max	Mean	Min	Max	Mean	Min	Max	Mean
<b>OVERALL</b>	<b>£7,350</b>	<b>£108,403</b>	<b>£41,314</b>	<b>\$8,890</b>	<b>\$138,008</b>	<b>\$52,516</b>	<b>\$10,030</b>	<b>\$268,681</b>	<b>\$72,778</b>
Other compensation	£700	£25,000	£8,460	\$847	\$31,222	\$10,773	\$955	\$54,132	\$15,615
<b>CONSULTING</b>	<b>£7,350</b>	<b>£80,000</b>	<b>£41,168</b>	<b>\$8,890</b>	<b>\$100,220</b>	<b>\$52,093</b>	<b>\$10,030</b>	<b>\$138,764</b>	<b>\$68,611</b>
Other compensation	£700	£15,000	£8,058	\$847	\$18,295	\$10,249	\$955	\$23,416	\$12,598
<b>TECHNOLOGY</b>	<b>£12,132</b>	<b>£63,568</b>	<b>£40,721</b>	<b>\$16,064</b>	<b>\$82,605</b>	<b>\$51,589</b>	<b>\$21,980</b>	<b>\$134,604</b>	<b>\$67,033</b>
Other compensation	£2,070	£9,301	£5,029	\$2,509	\$11,112	\$6,170	\$2,988	\$17,118	\$9,423
<b>FINANCE</b>	<b>£14,270</b>	<b>£108,403</b>	<b>£47,673</b>	<b>\$18,073</b>	<b>\$138,008</b>	<b>\$61,254</b>	<b>\$35,186</b>	<b>\$268,681</b>	<b>\$107,913</b>
Other compensation	£3,031	£25,000	£13,262	\$3,847	\$31,222	\$16,934	\$7,489	\$54,132	\$29,152
<b>DIVERSIFIED</b>	<b>£10,460</b>	<b>£56,611</b>	<b>£35,142</b>	<b>\$13,006</b>	<b>\$71,366</b>	<b>\$45,053</b>	<b>\$17,046</b>	<b>\$80,522</b>	<b>\$56,072</b>
Other compensation***	–	–	–	–	–	–	–	–	–

## Salary information by location

Location****	UK Pounds			US Dollars*			International Dollars**		
	Min	Max	Mean	Min	Max	Mean	Min	Max	Mean
<b>OVERALL</b>	<b>£7,350</b>	<b>£108,403</b>	<b>£41,314</b>	<b>\$8,890</b>	<b>\$138,008</b>	<b>\$52,516</b>	<b>\$10,030</b>	<b>\$268,681</b>	<b>\$72,778</b>
Other compensation	£700	£25,000	£8,460	\$847	\$31,222	\$10,773	\$955	\$54,132	\$15,615
<b>Asia</b>	<b>£13,489</b>	<b>£108,403</b>	<b>£41,743</b>	<b>\$18,000</b>	<b>\$138,008</b>	<b>\$53,677</b>	<b>\$26,901</b>	<b>\$268,681</b>	<b>\$106,674</b>
Other compensation	£3,031	£21,954	£11,881	\$3,847	\$27,805	\$15,219	\$7,489	\$54,132	\$29,630
<b>Europe</b>	<b>£7,350</b>	<b>£75,559</b>	<b>£36,423</b>	<b>\$8,890</b>	<b>\$94,797</b>	<b>\$46,016</b>	<b>\$10,030</b>	<b>\$93,053</b>	<b>\$56,462</b>
Other compensation	£700	£12,818	£5,502	\$847	\$16,933	\$7,113	\$955	\$21,068	\$8,668
<b>UK</b>	<b>£30,000</b>	<b>£60,000</b>	<b>£45,026</b>	<b>\$38,911</b>	<b>\$76,444</b>	<b>\$57,192</b>	<b>\$46,906</b>	<b>\$92,150</b>	<b>\$68,942</b>
Other compensation	£1,000	£25,000	£8,855	\$1,280	\$31,222	\$11,174	\$1,543	\$37,637	\$13,469



**“The MAM programme has been instrumental in shaping both my analytical and interpersonal skills. While I refined my ability to interpret data and make strategic decisions, I also learnt the power of networking and relationship-building — two key factors that helped me navigate the job market and secure opportunities in my desired industry.”**

Sara Moukhtarzadeh MAM2024  
Key Account Manager, Procter and Gamble

**53%**  
of students who  
accepted an offer  
received other  
compensation  
and bonuses

\* Conversion rates as per date of offer.

\*\* Purchasing power parity (PPP) included due to the high number of students who have salaries in non-US dollar currencies. The World Bank's implied PPP rate of exchange was used to equalise the purchasing power across economies.

\*\*\* Insufficient data points to report salary data.

\*\*\*\* Insufficient data points to report salary data for Africa/Middle East and Latin America (incl. Caribbean).

Other compensation includes sign-on and end-of-year bonus, where we have sufficient data. Salary data does not include sponsored or self-employed students, in accordance with CSEA guidelines.

## About the Career Centre

We want our students to develop skills, behaviours and strategies to manage their careers proactively. Our Career Centre experts support students as they shape their career goals.

### Our comprehensive career support involves

- **Career coaching and advising.** Coaches help you define a direction and maintain focus on your goals. Our sector advisors provide sector-specific advice to deepen your own research and share market trends.
- **Career learning.** A blended digital and in-person curriculum to move students' career skills to the next level and promote career progression.
- **Career opportunities.** Access to a wide range of career and networking opportunities, including over 200 employer events annually.



**“The LBS Career Centre was instrumental in my application journey. From providing exposure to strategy consulting through insightful speaker sessions to refining my CV with expert guidance and even supporting me in contract negotiations, their impact was invaluable. It wasn't just mentorship — it was a true partnership.”**

**Paras Gupta** MAM2024  
Business Analyst, Kearney, Middle East

92%

of MAM students engaged with the Career Centre

160+

workshops offered during 2023–2024 academic year

3,660+

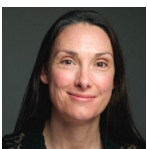
employers partnered with LBS

1,500+

job opportunities for Graduate Masters students advertised through LBS in 2023–2024

## Specialist coaches and career advisors

The Career Centre comprises 45 permanent staff, most of whom have real-world coaching and commercial experience to help students achieve their career goals. Team members include:



**Kira Hughes**  
Head of Graduate Masters Careers



**David Morris**  
Head of Technology and Media Careers



**Ania Mirkowska**  
Sector Manager, Fintech



**Daniel Lay**  
Head of Consulting Careers



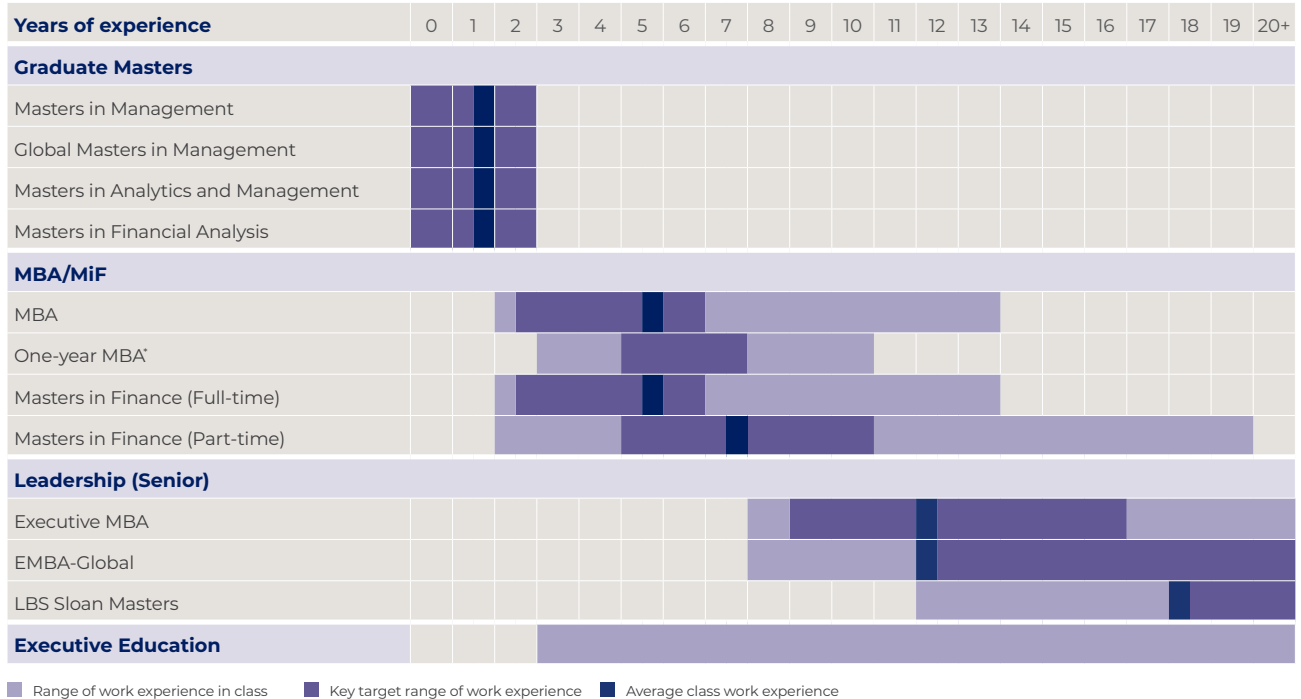
**Alyona Segline**  
Head of Diversified Careers



**Richard Bland**  
Head of Finance Careers

## Our programmes

London Business School can boost your capabilities and potential at every stage of your career.



\* Available to those who graduated three or more years ago with a Masters in Management or equivalent approved by EQUIS and/or AACSB or from the University of London.

### Graduate Masters

#### Masters in Management

12-16 MONTHS | FULL-TIME | LONDON

For recent graduates with up to two years of full-time postgraduate work experience who want to kick-start a career in business.

#### Global Masters in Management

24 MONTHS | FULL-TIME | LONDON AND SHANGHAI

For recent graduates with up to two years of full-time postgraduate work experience. Strong interest in Asia and knowledge of Mandarin highly recommended, but not mandatory.

#### Masters in Analytics and Management

12-16 MONTHS | FULL-TIME | LONDON

For recent graduates with up to two years of postgraduate work experience, who are targeting a career in business and data analytics.

#### Masters in Financial Analysis

12-16 MONTHS | FULL-TIME | LONDON

For recent graduates with up to two years of full-time postgraduate work experience who are looking to embark on a career in finance.

### Mid Career

#### MBA

15-21 MONTHS | FULL-TIME | LONDON

For individuals who are looking to make a vertical shift in their career path, change industry or job function, or develop an entrepreneurial toolkit.

#### One-year MBA

11 MONTHS | FULL-TIME | LONDON

For professionals with a masters in management looking to further their careers and take their entrepreneurial ideas further.

#### Masters in Finance (Full-time)

10-16 MONTHS | FULL-TIME | LONDON

For experienced financial professionals wishing to advance their career or change their area within finance.

#### Masters in Finance (Part-time)

22 MONTHS | PART-TIME | LONDON

For experienced financial professionals looking to further their career while still working.

### Leadership (Senior)

#### Executive MBA

17-22 MONTHS | PART-TIME, IN-PERSON OR BLENDED | LONDON OR DUBAI

For those who want to accelerate their career into general management or move beyond their technical or functional specialism.

#### EMBA-Global

20 MONTHS | PART-TIME | LONDON AND NEW YORK

For dynamic, mid-career managers and professionals who are highly ambitious and have, or aspire to have, transnational responsibilities.

#### LBS Sloan Masters in Leadership and Strategy

12 MONTHS | FULL-TIME | LONDON

Designed to prepare experienced senior managers for their next career challenge.

### Find out more

#### Masters Programmes

+44 (0)20 7000 7500  
masters@london.edu

#### Executive Education

+44 (0)20 7000 7390  
execinfo@london.edu

All admissions decisions are taken in accordance with best equal opportunities practice.



London  
Business  
School

---

London Business School  
Regent's Park  
London NW1 4SA  
United Kingdom  
Tel: +44 (0)20 7000 7000  
london.edu