



# MBA employment report

Graduating Class of 2025

London  
Business  
School





## Introduction from the Head of Career Centre

Success in today's labour market demands adaptability, strategic thinking, and emerging skills – qualities that 86% of our MBA2025 graduates leveraged to secure job offers within three months of graduation.

As economic and geopolitical uncertainty disrupts traditional career pathways, companies have shown a preference for hiring individual students with specific skills over bulk hiring, as evidenced by the rise in unique hirers (524 this year, up from 510 for MBA2024).

At London Business School, we cultivate analytical and AI skills alongside interpersonal and reflective capabilities, providing students with applied experience to refine their skills and excel in both recruitment and their careers.

While switching industries has become more challenging without relevant transferable skills, London Business School continues to offer transformative opportunities. Notably, 45% of students switched sectors, and an impressive 32% managed to switch both location and sector, compared to 21% last year. This demonstrates our graduates' flexibility and determination to start their post-MBA careers in roles that align with their aspirations.

Our unwavering commitment to each student's career journey is reflected in our high reporting rate and extensive support, including 650+ workshops and over 6,300 one-on-one sessions. We are proud to equip graduates with lifelong career management skills, ensuring they find the right job – not just any job – whether it's their first role after graduation or every career move they make in the future.

As our MBA2025 graduates move into diverse roles and ventures, we celebrate their career achievements and support their ongoing impact in the global professional landscape.

86%  
**accepted an offer**  
within three months  
of graduation

88%  
**received an offer**  
within three months  
of graduation

21  
**graduates**  
went on to start their  
own business

98%  
**reporting rate**



**Zoe McLoughlin**

Executive Director of Career Centre  
London Business School

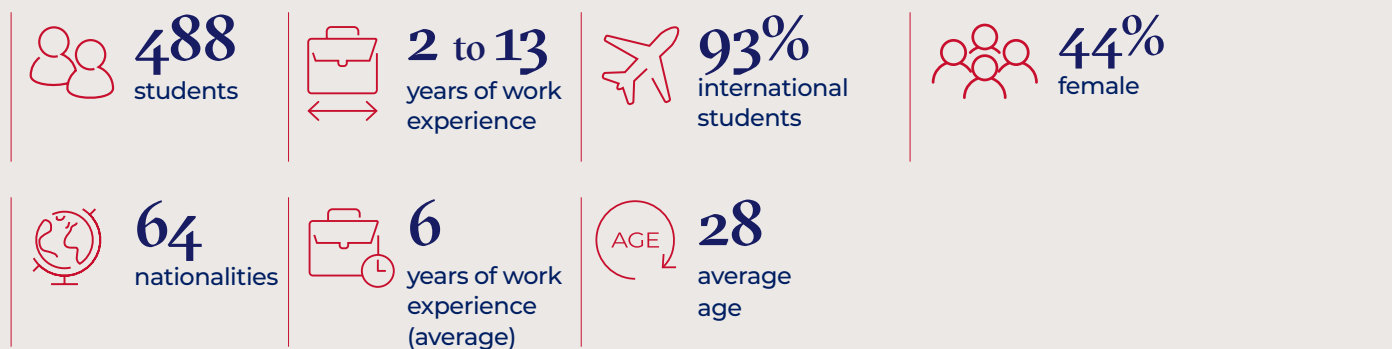


**“The MBA gave me the opportunity to explore new industries, develop new skills and gain global perspectives. The hands-on projects and global experiences pushed me outside my comfort zone and helped me grow into a more confident problem-solver and leader – ultimately leading me to a role that brings together all the passions I once wrote about in my application essay.”**

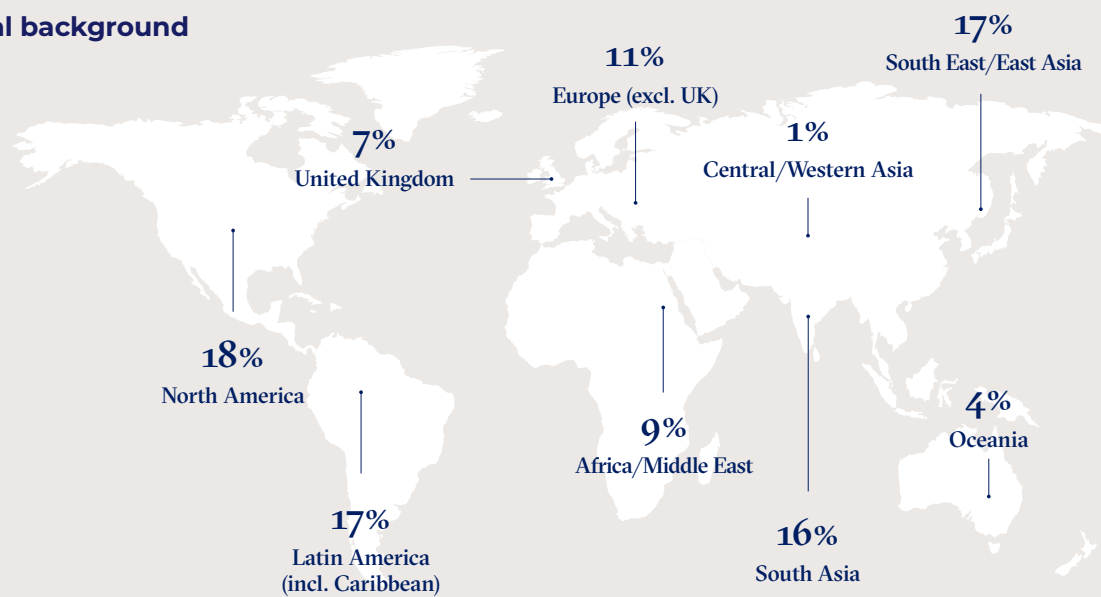
**Anushree Mathur** MBA2025

Product & Partnerships Manager – British Airways, American Express

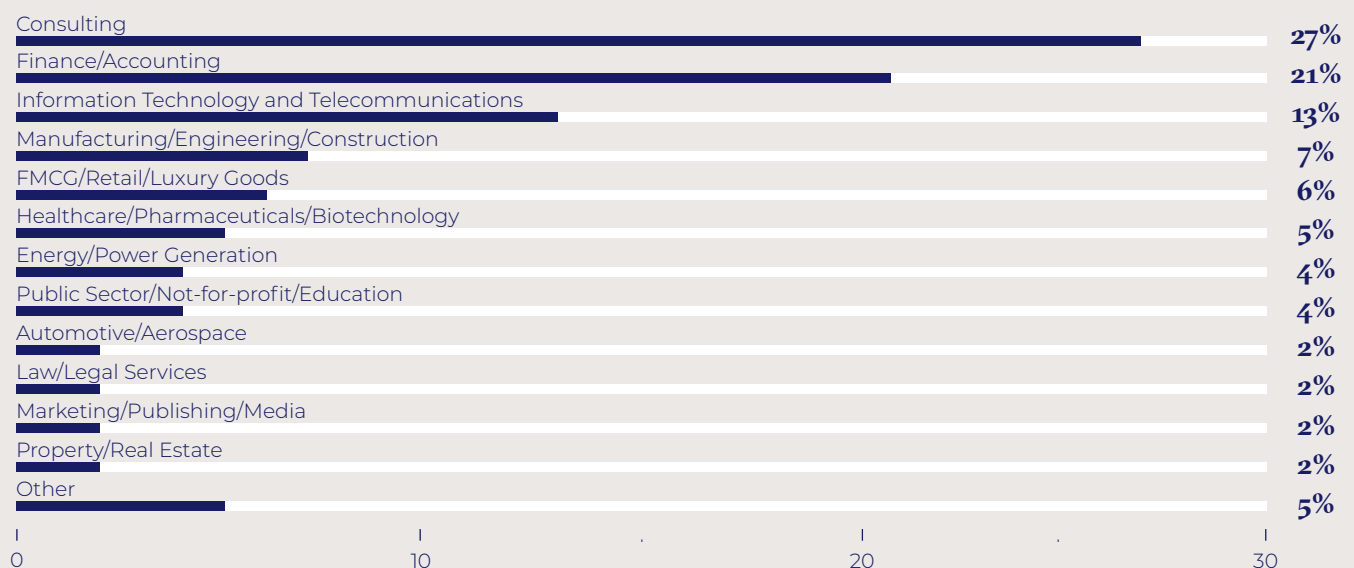
## MBA2025 class profile



### Regional background



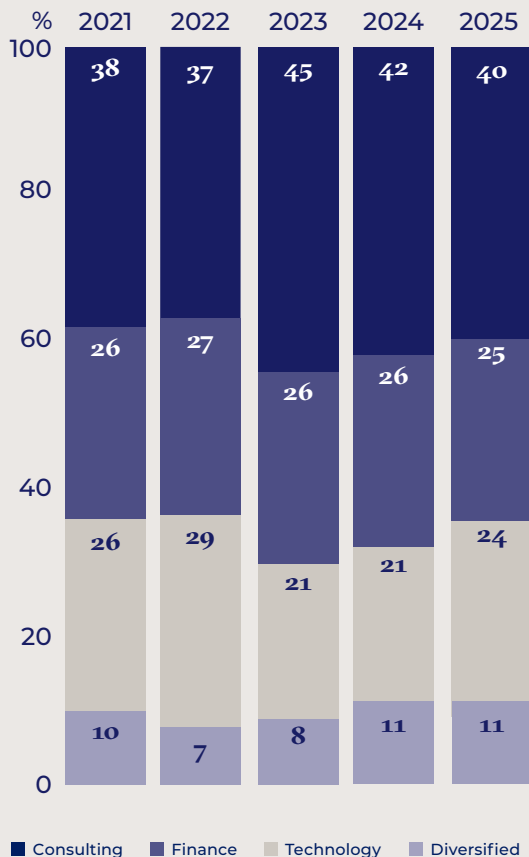
### Professional background (pre-MBA)



Our admissions decisions are taken in accordance with best equal opportunities practice.  
Statistics are calculated based on the total number of graduates from the MBA2025 class.

## Sector destinations

### Sector breakdown 2025



<b>CONSULTING</b>	<b>40%</b>
<b>FINANCE</b>	<b>25%</b>
● Investment Management	6%
● Private Equity	6%
● Banking	5%
● Commercial Banking/Project Finance	2%
● Venture Capital	2%
● Finance — Other*	4%
<b>TECHNOLOGY</b>	<b>24%</b>
● Information Technology	7%
● Fintech	6%
● Internet/E-Commerce	4%
● Electronics	2%
● Healthtech	2%
● Technology – Other**	3%
<b>DIVERSIFIED</b>	<b>11%</b>
● Industrials	3%
● Energy	2%
● Consumer & Retail	1%
● Healthcare	1%
● Diversified – Other***	4%

### Key employers by sector

CONSULTING	FINANCE	TECHNOLOGY	DIVERSIFIED
● Accenture	● Alchemy Partners	● Amazon	● Aramco
● AlixPartners	● Bernstein	● American Express	● CAA Portas
● Bain & Company	● Bridgepoint Capital	● Google	● Eli Lilly and Company
● Boston Consulting Group	● British International Investment	● Mastercard	● Kraft Heinz Company
● Deloitte	● Citi	● Meta	● Manchester United
● Kearney	● Goldman Sachs	● Revolut	● Merck Group
● McKinsey & Company	● IFC	● Samsung Global Strategy Group	● Mitsui
● Oliver Wyman	● Morgan Stanley	● Sana	● RBI – Restaurant Brands International
● Roland Berger	● Pimco	● TikTok	● Sumitomo Corporation
● Strategy&		● Uber	● TechnoServe

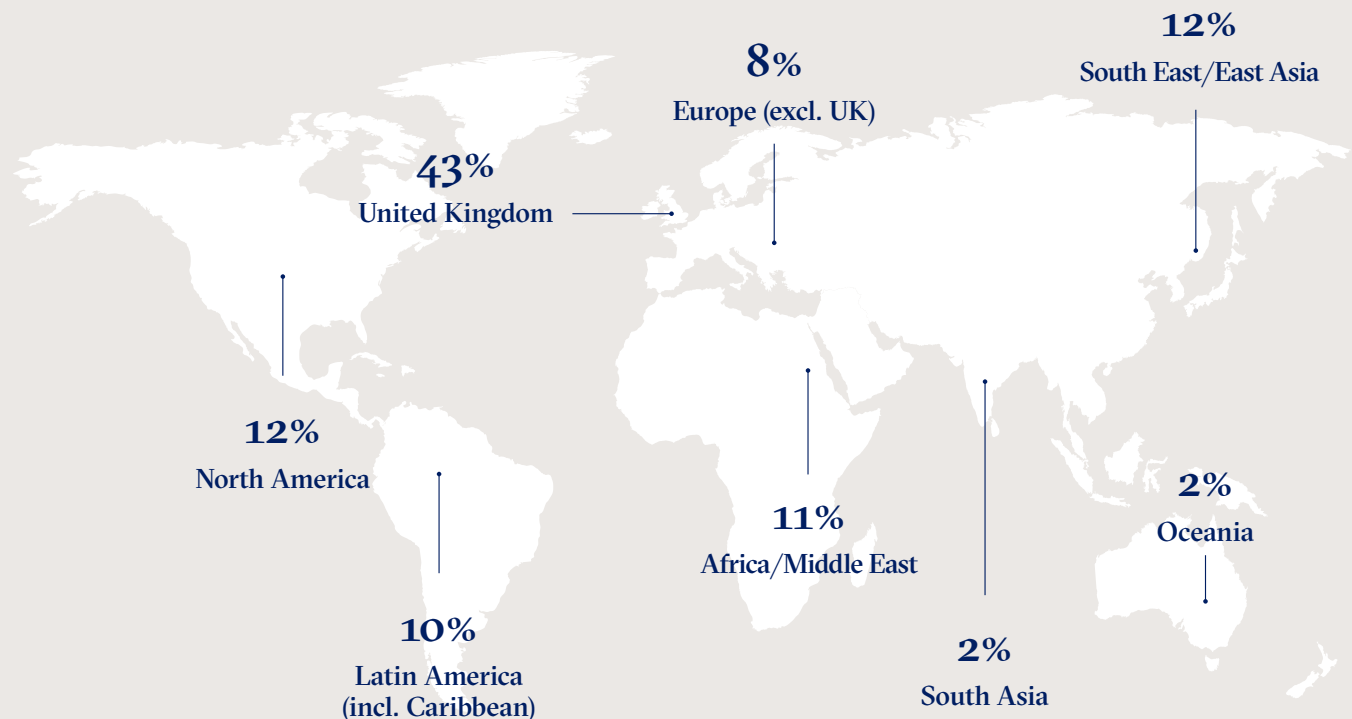
The sector destinations and key employer information above **includes sponsored students** to best represent the choices our graduates make.

\* **Finance – Other:** Insurance and Pension Services, Real Estate, Services & Products, Central Banks/Ministries/Regulation/Public Finance.

\*\* **Technology – Other:** Edtech, Media, PropTech, Telecommunications, Climate Tech, Incubators/Accelerators, Foodtech.

\*\*\* **Diversified – Other:** Sports, Government, Law/Legal Services, Leisure/Travel/Tourism, Social Impact.

## Job location



### MBA2025 graduates went to work at organisations in the following 39 locations:

- Argentina
- Australia
- Brazil
- Canada
- Chile
- China Mainland
- Colombia
- Denmark
- Dominican Republic
- France
- Germany
- Greece
- Hong Kong S.A.R.
- India
- Indonesia
- Ireland
- Italy
- Ivory Coast
- Japan
- Malaysia
- Mexico
- Morocco
- Netherlands
- Norway
- Peru
- Poland
- Qatar
- Saudi Arabia
- Singapore
- South Africa
- South Korea
- Spain
- Sweden
- Switzerland
- Thailand
- United Arab Emirates
- United Kingdom
- United States (USA)
- Vietnam



**“The MBA helped me become a more confident leader and connected me with hundreds of people I can turn to whenever I encounter a roadblock. With around 500 peers in our cohort and thousands of alumni worldwide, there’s always someone who’s faced a similar challenge and is ready to help. I’m now far better equipped to succeed in my career and eternally grateful for the friendships I’ve forged with people from all over the world.”**

**Abe Fangman** MBA2025  
Senior Project Manager, NextEra Energy

Employment is subject to meeting visa requirements.

## Career switchers



**44%**

switched location



**45%**

switched sector



**32%**

switched sector  
and location

### Location switchers

#### Pre-LBS

Africa/Middle East: 10%

Asia: 31%

UK: 11%

Europe (excl. UK): 9%

Latin America (incl. Caribbean): 18%

North America: 18%

Oceania: 3%

#### Post-LBS

Africa/Middle East: 12%

Asia: 15%

UK: 46%

Europe (excl. UK): 7%

Latin America (incl. Caribbean): 9%

North America: 9%

Oceania: 2%

### Sector switchers

#### Pre-LBS

Consulting: 29%

Diversified: 33%

Finance: 22%

Technology: 16%

#### Post-LBS

Consulting: 39%

Diversified: 11%

Finance: 26%

Technology: 24%

The graphs display only students with both pre-LBS and post-LBS records.

## The figures

Industry	UK Pounds			US Dollars			International Dollars*		
	Mean	Max	Min	Mean	Max	Min	Mean	Max	Min
<b>OVERALL</b>	<b>£91,928</b>	<b>£237,682</b>	<b>£22,465</b>	<b>\$123,373</b>	<b>\$318,985</b>	<b>\$30,150</b>	<b>\$135,634</b>	<b>\$429,223</b>	<b>\$42,728</b>
Other compensation	£41,000	£210,000	£3,370	\$55,024	\$281,833	\$4,523	\$60,458	\$281,833	\$5,797
<b>CONSULTING</b>	<b>£98,856</b>	<b>£175,000</b>	<b>£35,000</b>	<b>\$132,671</b>	<b>\$234,861</b>	<b>\$46,972</b>	<b>\$144,740</b>	<b>\$272,925</b>	<b>\$56,179</b>
Other compensation	£48,777	£163,292	£5,598	\$65,462	\$219,149	\$7,513	\$72,257	\$219,149	\$7,557
<b>FINANCE</b>	<b>£93,406</b>	<b>£237,682</b>	<b>£27,771</b>	<b>\$125,357</b>	<b>\$318,985</b>	<b>\$37,271</b>	<b>\$144,297</b>	<b>\$381,339</b>	<b>\$39,554</b>
Other compensation	£59,058	£281,735	£5,000	\$79,260	\$378,106	\$6,710	\$88,301	\$378,106	\$7,121
<b>Private Equity</b>	<b>£100,905</b>	<b>£237,682</b>	<b>£40,000</b>	<b>\$135,421</b>	<b>\$318,985</b>	<b>\$53,683</b>	<b>\$144,869</b>	<b>\$318,985</b>	<b>\$57,971</b>
Other compensation	£73,542	£281,735	£10,000	\$98,698	\$378,106	\$13,421	\$105,224	\$378,106	\$14,493
<b>Banking</b>	<b>£102,968</b>	<b>£170,000</b>	<b>£31,233</b>	<b>\$138,189</b>	<b>\$228,151</b>	<b>\$41,917</b>	<b>\$146,509</b>	<b>\$244,130</b>	<b>\$62,835</b>
Other compensation	£77,255	£210,000	£20,000	\$103,681	\$281,833	\$26,841	\$109,123	\$281,833	\$28,986
<b>Investment Management</b>	<b>£88,063</b>	<b>£155,038</b>	<b>£27,771</b>	<b>\$118,187</b>	<b>\$208,071</b>	<b>\$37,271</b>	<b>\$151,987</b>	<b>\$329,193</b>	<b>\$39,554</b>
Other compensation	£66,380	£160,521	£5,000	\$89,087	\$215,430	\$6,710	\$107,275	\$280,676	\$7,121
<b>Venture Capital</b>	<b>£97,983</b>	<b>£152,950</b>	<b>£36,000</b>	<b>\$131,500</b>	<b>\$205,269</b>	<b>\$48,314</b>	<b>\$136,539</b>	<b>\$205,269</b>	<b>\$52,174</b>
Other compensation	£37,468	£53,935	£21,000	\$50,284	\$72,384	\$28,183	\$51,410	\$72,384	\$30,435
<b>Commercial Banking/Project Finance</b>	<b>£74,530</b>	<b>£140,000</b>	<b>£41,456</b>	<b>\$100,023</b>	<b>\$187,889</b>	<b>\$55,636</b>	<b>\$113,028</b>	<b>\$202,899</b>	<b>\$83,399</b>
Other compensation	£42,893	£71,361	£15,546	\$57,565	\$95,771	\$20,864	\$65,574	\$107,264	\$29,556
<b>Finance – Other<sup>1</sup></b>	<b>£88,238</b>	<b>£148,514</b>	<b>£37,965</b>	<b>\$118,421</b>	<b>\$199,315</b>	<b>\$50,952</b>	<b>\$150,012</b>	<b>\$381,339</b>	<b>\$75,536</b>
Other compensation	£20,509	£33,280	£5,514	\$27,525	\$44,664	\$7,400	\$34,299	\$63,648	\$10,651
<b>TECHNOLOGY</b>	<b>£83,287</b>	<b>£163,680</b>	<b>£25,387</b>	<b>\$111,776</b>	<b>\$219,668</b>	<b>\$34,072</b>	<b>\$120,576</b>	<b>\$222,208</b>	<b>\$51,074</b>
Other compensation	£27,231	£99,107	£4,000	\$36,546	\$133,008	\$5,368	\$40,890	\$185,914	\$5,797
<b>Fintech</b>	<b>£86,404</b>	<b>£163,680</b>	<b>£46,151</b>	<b>\$115,960</b>	<b>\$219,668</b>	<b>\$61,937</b>	<b>\$121,708</b>	<b>\$219,668</b>	<b>\$59,243</b>
Other compensation	£31,307	£73,000	£5,565	\$42,016	\$97,971	\$7,469	\$45,166	\$105,797	\$7,469
<b>Information Technology</b>	<b>£82,655</b>	<b>£150,000</b>	<b>£40,000</b>	<b>\$110,928</b>	<b>\$201,310</b>	<b>\$53,683</b>	<b>\$119,488</b>	<b>\$217,391</b>	<b>\$57,971</b>
Other compensation	£28,328	£71,523	£4,000	\$38,018	\$95,989	\$5,368	\$40,888	\$95,989	\$5,797
<b>Internet/E-Commerce</b>	<b>£79,075</b>	<b>£130,000</b>	<b>£62,000</b>	<b>\$106,123</b>	<b>\$174,468</b>	<b>\$83,208</b>	<b>\$110,746</b>	<b>\$188,406</b>	<b>\$89,855</b>
Other compensation	£12,439	£18,600	£8,377	\$16,694	\$24,962	\$11,242	\$17,874	\$26,957	\$10,753
<b>Healthtech</b>	<b>£110,170</b>	<b>£147,509</b>	<b>£65,000</b>	<b>\$147,855</b>	<b>\$197,966</b>	<b>\$87,234</b>	<b>\$154,394</b>	<b>\$197,966</b>	<b>\$94,203</b>
Other compensation	£19,751	£29,502	£10,000	\$26,507	\$39,593	\$13,421	\$27,043	\$39,593	\$14,493
<b>Electronics</b>	<b>£118,221</b>	<b>£118,455</b>	<b>£117,988</b>	<b>\$158,660</b>	<b>\$158,974</b>	<b>\$158,347</b>	<b>\$221,770</b>	<b>\$222,208</b>	<b>\$221,332</b>
Other compensation	£76,101	£99,107	£53,095	\$102,132	\$133,008	\$71,256	\$142,757	\$185,914	\$99,600
<b>Technology – Other<sup>2</sup></b>	<b>£66,876</b>	<b>£85,000</b>	<b>£25,387</b>	<b>\$89,752</b>	<b>\$114,075</b>	<b>\$34,072</b>	<b>\$98,509</b>	<b>\$123,188</b>	<b>\$51,074</b>
Other compensation	£23,007	£45,000	£8,000	\$30,878	\$60,393	\$10,737	\$34,772	\$65,217	\$11,594
<b>DIVERSIFIED</b>	<b>£87,289</b>	<b>£222,635</b>	<b>£22,465</b>	<b>\$117,148</b>	<b>\$298,790</b>	<b>\$30,150</b>	<b>\$134,284</b>	<b>\$298,790</b>	<b>\$54,748</b>
Other compensation	£35,984	£107,000	£3,370	\$48,293	\$143,601	\$4,523	\$56,762	\$155,072	\$18,489
<b>Consumer &amp; Retail</b>	<b>£78,410</b>	<b>£134,602</b>	<b>£22,465</b>	<b>\$105,232</b>	<b>\$180,645</b>	<b>\$30,150</b>	<b>\$121,443</b>	<b>\$145,476</b>	<b>\$107,108</b>
Other compensation	£35,535	£74,031	£3,370	\$47,690	\$99,355	\$4,523	\$45,329	\$80,012	\$18,489
<b>Industrials</b>	<b>£79,887</b>	<b>£163,250</b>	<b>£41,000</b>	<b>\$107,213</b>	<b>\$219,092</b>	<b>\$55,025</b>	<b>\$133,495</b>	<b>\$220,389</b>	<b>\$82,483</b>
Other compensation	£29,056	£47,165	£19,600	\$38,995	\$63,299	\$26,304	\$53,892	\$91,110	\$30,516
<b>Healthcare</b>	<b>£94,907</b>	<b>£96,814</b>	<b>£93,000</b>	<b>\$127,371</b>	<b>\$129,930</b>	<b>\$124,812</b>	<b>\$129,530</b>	<b>\$134,783</b>	<b>\$124,278</b>
Other compensation	£72,118	£107,000	£37,236	\$96,787	\$143,601	\$49,973	\$101,436	\$155,072	\$47,799
<b>Energy</b>	<b>£62,868</b>	<b>£124,813</b>	<b>£29,185</b>	<b>\$84,373</b>	<b>\$167,507</b>	<b>\$39,168</b>	<b>\$97,292</b>	<b>\$167,507</b>	<b>\$54,748</b>
Other compensation	£23,624	£47,723	£10,809	\$31,704	\$64,047	\$14,507	\$36,382	\$64,047	\$20,277
<b>Diversified – Other<sup>3</sup></b>	<b>£104,534</b>	<b>£222,635</b>	<b>£31,233</b>	<b>\$140,291</b>	<b>\$298,790</b>	<b>\$41,917</b>	<b>\$156,356</b>	<b>\$298,790</b>	<b>\$62,835</b>
Other compensation	£36,146	£54,248	£18,000	\$48,510	\$72,805	\$24,157	\$60,850	\$109,135	\$26,087

\* Purchasing power parity (PPP) included due to the high number of students who have salaries in non-US dollar currencies. The World Bank's implied PPP rate of exchange was used to equalise the purchasing power across economies.

Other compensation includes sign-on and end-of-year bonus where we have sufficient data.

<sup>1</sup> Finance – Other: Central Banks/Ministries/Regulation/Public Finance, Services & Products, Real Estate, Insurance and Pension Services.

<sup>2</sup> Technology – Other: Climate Tech, Media, Proptech, Edtech.

<sup>3</sup> Diversified – Other: Government, Law/Legal Services, Leisure/Travel/Tourism, Sports.

Salary data does not include sponsored or self-employed students, in accordance with MBA CSEA guidelines.

Remuneration figures include those for large corporates through to early stage startups.

	UK Pounds			US Dollars			International Dollars*		
	Mean	Max	Min	Mean	Max	Min	Mean	Max	Min
<b>Africa/Middle East</b>	<b>£106,108</b>	<b>£136,648</b>	<b>£76,183</b>	<b>\$142,404</b>	<b>\$183,390</b>	<b>\$102,243</b>	<b>\$144,158</b>	<b>\$183,365</b>	<b>\$116,422</b>
Other compensation	£65,546	£163,292	£16,745	\$87,968	\$219,149	\$22,473	\$88,841	\$219,149	\$22,470
<b>Asia</b>	<b>£68,417</b>	<b>£167,880</b>	<b>£22,465</b>	<b>\$91,820</b>	<b>\$225,306</b>	<b>\$30,150</b>	<b>\$132,461</b>	<b>\$329,193</b>	<b>\$39,554</b>
Other compensation	£38,557	£153,153	£3,370	\$51,746	\$205,542	\$4,523	\$70,732	\$280,676	\$7,121
<b>Europe</b>	<b>£79,344</b>	<b>£142,686</b>	<b>£43,764</b>	<b>\$106,485</b>	<b>\$191,493</b>	<b>\$58,734</b>	<b>\$99,794</b>	<b>\$154,212</b>	<b>\$56,179</b>
Other compensation	£38,328	£160,521	£4,618	\$51,438	\$215,430	\$6,198	\$47,057	\$173,489	\$5,928
<b>Latin America &amp; Caribbean</b>	<b>£78,784</b>	<b>£141,286</b>	<b>£31,288</b>	<b>\$105,733</b>	<b>\$189,615</b>	<b>\$41,990</b>	<b>\$149,459</b>	<b>\$381,339</b>	<b>\$81,920</b>
Other compensation	£51,587	£145,313	£5,514	\$69,234	\$195,019	\$7,400	\$94,939	\$218,422	\$10,651
<b>North America</b>	<b>£143,262</b>	<b>£237,682</b>	<b>£88,611</b>	<b>\$192,267</b>	<b>\$318,985</b>	<b>\$118,922</b>	<b>\$189,549</b>	<b>\$318,985</b>	<b>\$98,857</b>
Other compensation	£57,398	£281,735	£5,565	\$77,032	\$378,106	\$7,469	\$76,219	\$378,106	\$7,469
<b>Oceania</b>	<b>£102,611</b>	<b>£163,250</b>	<b>£82,978</b>	<b>\$137,710</b>	<b>\$219,092</b>	<b>\$111,361</b>	<b>\$138,526</b>	<b>\$220,389</b>	<b>\$112,021</b>
Other compensation	£17,013	£24,458	£5,598	\$22,833	\$32,824	\$7,513	\$22,968	\$33,018	\$7,557
<b>UK</b>	<b>£88,516</b>	<b>£150,000</b>	<b>£36,000</b>	<b>\$118,794</b>	<b>\$201,310</b>	<b>\$48,314</b>	<b>\$128,284</b>	<b>\$217,391</b>	<b>\$52,174</b>
Other compensation	£40,867	£110,000	£4,000	\$54,847	\$147,627	\$5,368	\$59,228	\$159,420	\$5,797



83%

of students who accepted an offer received other compensation/bonuses



34%

salary increase on average among the MBA2025 class\*\*

\* Purchasing power parity (PPP) included due to the high number of students who have salaries in non-US dollar currencies. The World Bank's implied PPP rate of exchange was used to equalise the purchasing power across economies.

\*\* Salary increase was calculated using the International Dollars unit of currency to better reflect the salary comparison between pre- and post-LBS job roles when job location has changed.

Other compensation includes sign-on and end-of-year bonus where we have sufficient data.

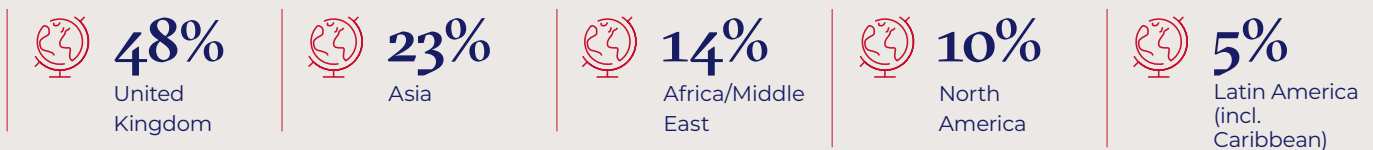
Salary data does not include sponsored or self-employed students, in accordance with MBA CSEA guidelines.



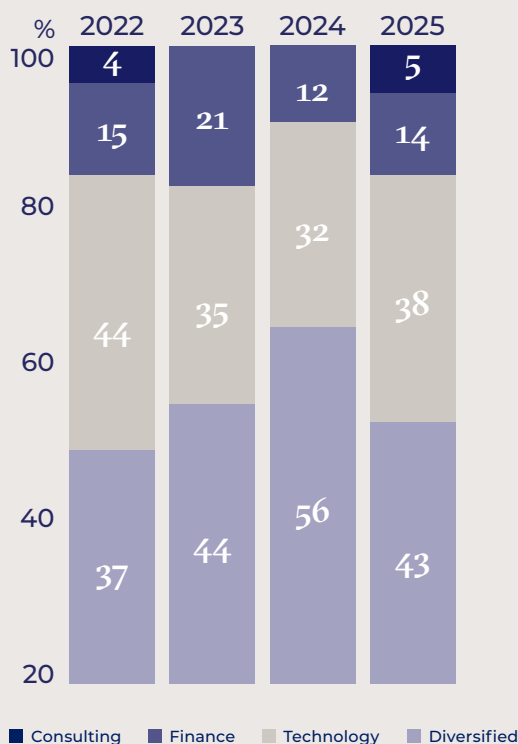
## Entrepreneurs

Many of our MBA students arrive with an aspiration to create their own venture but few know how to do so. We offer a range of opportunities for our MBA students that cater specifically to established and aspiring entrepreneurs, including the Entrepreneurship Summer School, the LBS Incubator programme to help promising entrepreneurs launch their business venture, and many targeted elective courses specialising in entrepreneurship, including The Entrepreneurship Lab. To find out more about what we offer, visit [london.edu/masters-degrees/entrepreneurship-at-lbs](https://london.edu/masters-degrees/entrepreneurship-at-lbs)

### Location breakdown



### Sector breakdown 2025



CONSULTING	5%
FINANCE	14%
• Private Equity	10%
• Real Estate	4%
TECHNOLOGY	38%
• Fintech	10%
• Internet/E-Commerce	10%
• Climate Tech	5%
• Information Technology	5%
• Foodtech	4%
• Media	4%
DIVERSIFIED	43%
• Industrials	14%
• Education/Training	10%
• Consumer & Retail	5%
• Healthcare	5%
• Leisure/Travel/Tourism	5%
• Other	4%



**“For me, London Business School was the ultimate launchpad. The incredible network and collective wisdom of this community are the very foundations AcouBatt is built on. It was the best investment I’ve ever made.”**

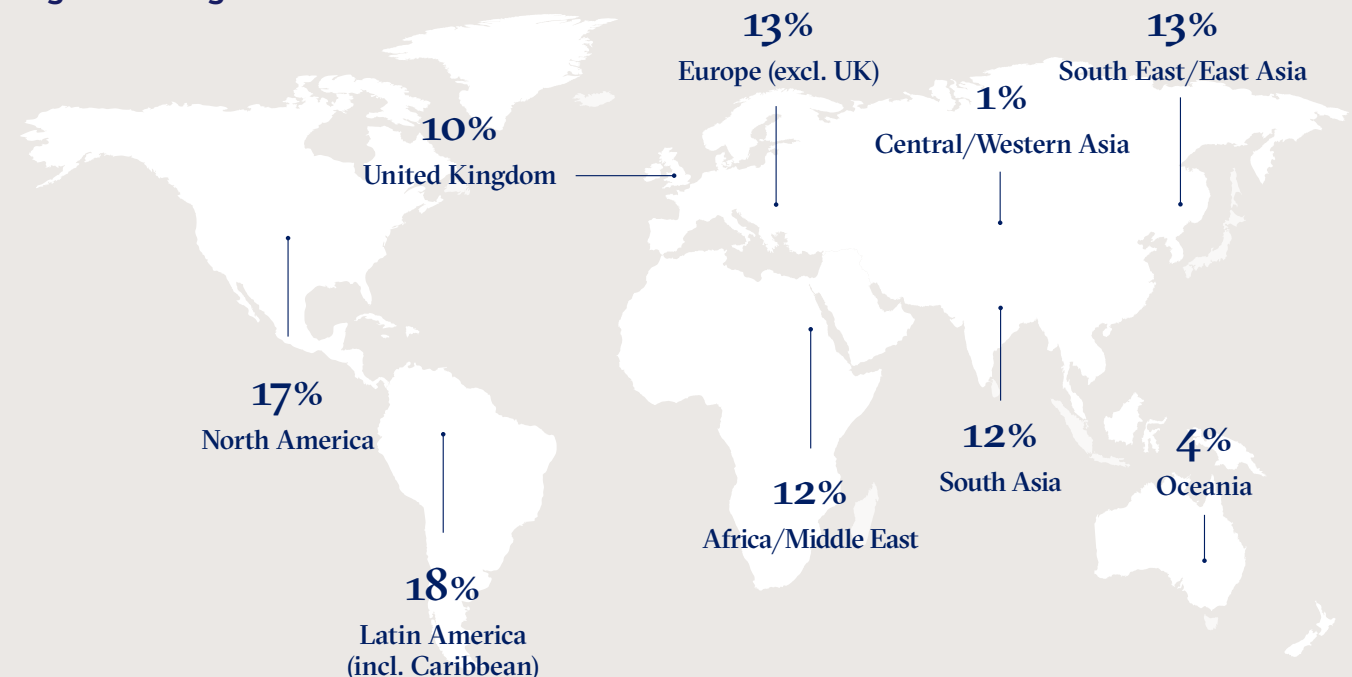
**Chris Haoxin Xu** MBA2025  
Founder & Commercial Director, AcouBatt

Statistics are derived from the 21 students who reported starting a business or being self-employed. Location and sector data reflect information provided by students who disclosed details about these categories.

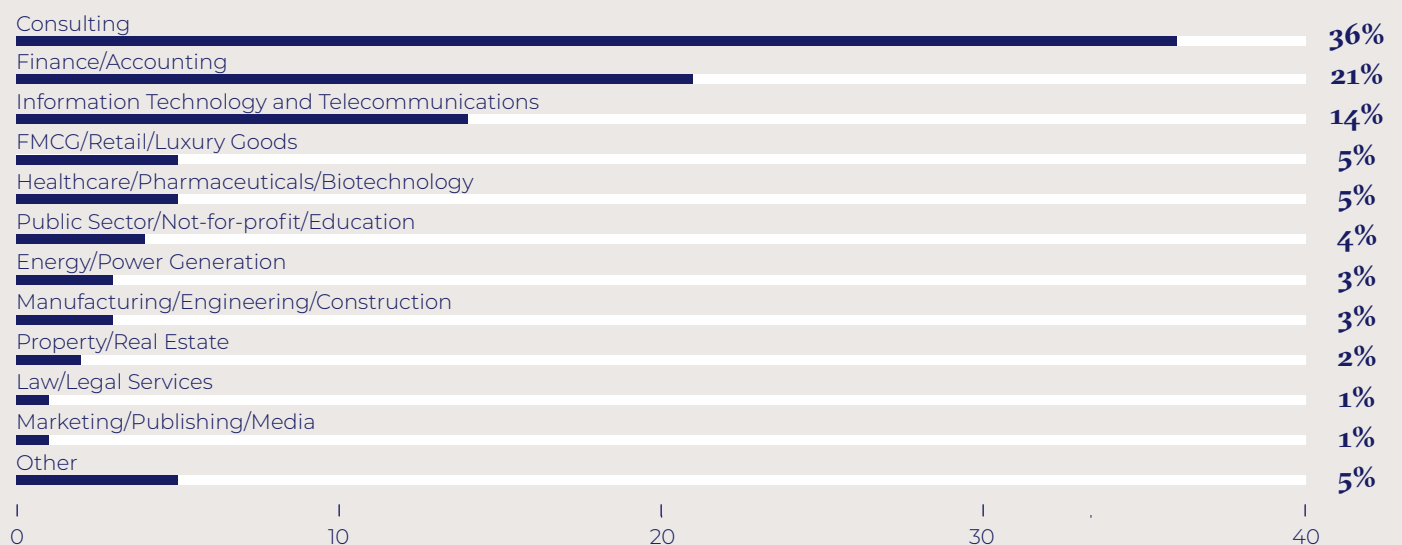
## MBA2026 class profile



### Regional background



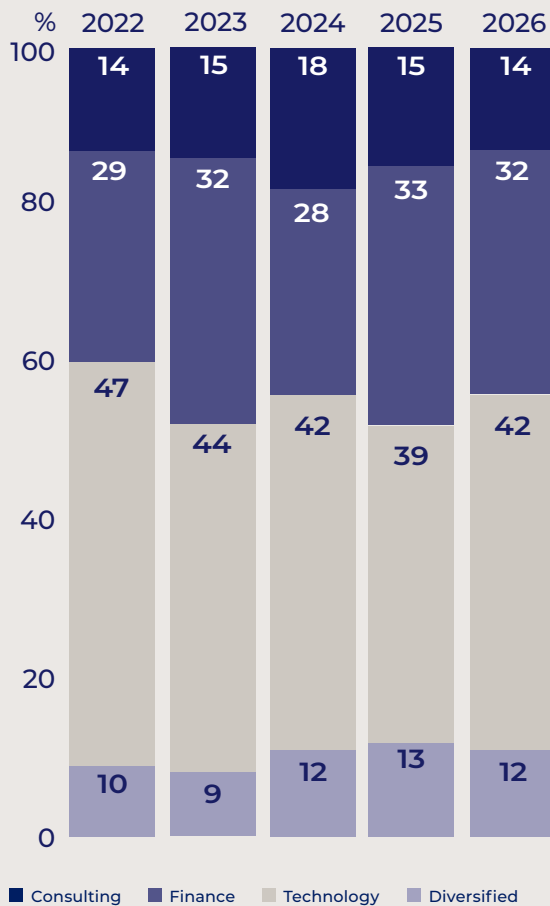
### Professional background (pre-MBA)



Our admissions decisions are taken in accordance with best equal opportunities practice.

## Sector destinations

### Sector destinations



<b>CONSULTING</b>	<b>14%</b>
<b>FINANCE</b>	<b>32%</b>
● Private Equity	14%
● Venture Capital	9%
● Investment Management	4%
● Banking	3%
● Finance – Other*	2%
<b>TECHNOLOGY</b>	<b>42%</b>
● Information Technology	12%
● Fintech	11%
● Healthtech	6%
● Climate Tech	3%
● Internet/E-Commerce	2%
● Media	2%
● Proptech	2%
● Technology – Other**	4%
<b>DIVERSIFIED</b>	<b>12%</b>
● Consumer & Retail	4%
● Healthcare	3%
● Energy	1%
● Industrials	1%
● Social Impact	1%
● Diversified – Other***	2%



# 97%

of students seeking internships  
accepted an offer



# 95%

reporting rate

The data was calculated in compliance with Career Services and Employer Alliance (CSEA) reporting standards.

\* **Finance – Other:** Central Banks/Ministries/Regulation/Public Finance, Real Estate.

\*\* **Technology – Other:** Mobility, Electronics, Telecommunications, Foodtech.

\*\*\* **Diversified – Other:** Education/Training, Leisure/Travel/Tourism, Sports, Government.

## Key employers and weekly compensation

### Key employers by sector for internships

CONSULTING	FINANCE	TECHNOLOGY	DIVERSIFIED
<ul style="list-style-type: none"> <li>Accenture</li> <li>AlixPartners</li> <li>Alvarez &amp; Marsal</li> <li>Bain &amp; Company</li> <li>Boston Consulting Group</li> <li>Deloitte</li> <li>FTI Consulting</li> <li>McKinsey &amp; Company</li> <li>Oliver Wyman</li> <li>Strategy&amp;</li> </ul>	<ul style="list-style-type: none"> <li>Astorg</li> <li>Bernstein</li> <li>British International Investment</li> <li>Cinven</li> <li>Citi</li> <li>Lazard</li> <li>Morgan Stanley</li> <li>Mubadala Capital</li> <li>Pimco</li> </ul>	<ul style="list-style-type: none"> <li>Amazon</li> <li>American Express</li> <li>Eucalyptus</li> <li>Google</li> <li>Marshmallow</li> <li>Ori Biotech</li> <li>Planet</li> <li>Samsung Global Strategy Group</li> <li>Spotify</li> <li>TikTok</li> </ul>	<ul style="list-style-type: none"> <li>Associated British Ports</li> <li>Clinton Health Access Initiative (CHAI)</li> <li>Eli Lilly and Company</li> <li>Estée Lauder Companies Inc.</li> <li>Kraft Heinz Company</li> <li>NHS</li> <li>Octopus Energy</li> <li>RBI – Restaurant Brands International</li> <li>Syensqo</li> <li>Tata Group</li> </ul>

### Internship weekly compensation

Sector	UK Pounds			US Dollars			International Dollars*		
	Mean	Max	Min	Mean	Max	Min	Mean	Max	Min
OVERALL	£1,062	£3,750	£101	\$1,425	\$5,033	\$136	\$1,539	\$5,435	\$146
CONSULTING	£1,681	£2,868	£432	\$2,257	\$3,849	\$580	\$2,437	\$4,157	\$626
TECHNOLOGY	£822	£2,308	£115	\$1,103	\$3,097	\$155	\$1,191	\$3,344	\$167
FINANCE	£1,066	£3,750	£102	\$1,431	\$5,033	\$137	\$1,545	\$5,435	\$148
DIVERSIFIED	£813	£2,308	£115	\$1,091	\$3,097	\$155	\$1,178	\$3,344	\$167



“The MBA enhanced my strategic thinking and helped me approach problems from an international business perspective. It enabled me to collaborate effectively with individuals from different cultures and broadened my view by connecting me with individuals from diverse backgrounds. I also gained practical knowledge in tech and strategy, which prepared me for my current role at Amazon.”

**Magdalena Herrera** MBA2025  
Sr Program Manager – MBA Launch Program, Amazon

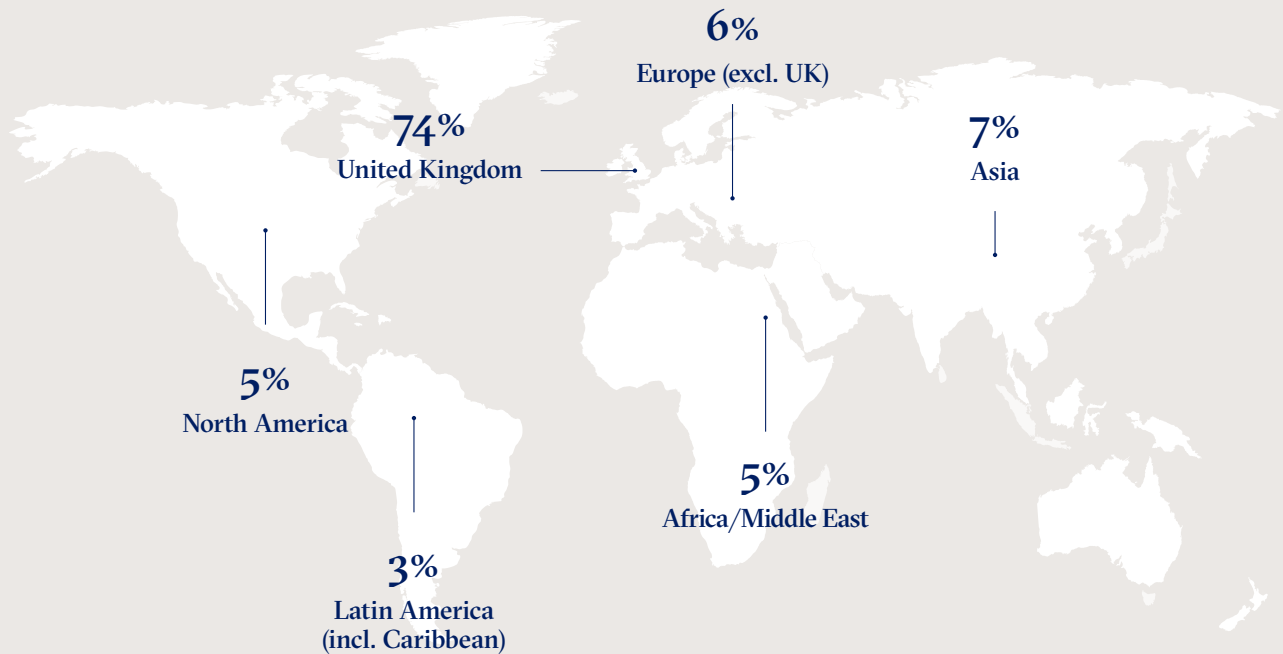
\* Purchasing power parity (PPP) included due to the high number of students who have salaries in non-US dollar currencies. The World Bank's implied PPP rate of exchange was used to equalise the purchasing power across economies.

Remuneration figures include those for large corporates through to early stage startups.





## Locations



### MBA2026 students secured internships at organisations in the following 36 locations:

- |                  |                    |                |                        |
|------------------|--------------------|----------------|------------------------|
| ● Australia      | ● France           | ● Kenya        | ● Singapore            |
| ● Austria        | ● Germany          | ● Luxembourg   | ● South Korea          |
| ● Bangladesh     | ● Greece           | ● Malaysia     | ● Spain                |
| ● Belgium        | ● Hong Kong S.A.R. | ● Mexico       | ● Sweden               |
| ● Brazil         | ● India            | ● Netherlands  | ● Switzerland          |
| ● Canada         | ● Indonesia        | ● Nigeria      | ● Thailand             |
| ● Chile          | ● Ireland          | ● Philippines  | ● United Arab Emirates |
| ● China Mainland | ● Italy            | ● Qatar        | ● United Kingdom       |
| ● Colombia       | ● Japan            | ● Saudi Arabia | ● United States (USA)  |



## 500+ companies hired students for full-time and internship positions

### CONSULTING

- Accenture
- AlixPartners
- Arthur D. Little
- Bain & Company
- Boston Consulting Group
- Contango
- Cornerstone Research
- Deloitte
- FTI Consulting
- Kearney
- L.E.K. Consulting
- Matrix Consulting
- McKinsey & Company
- Monitor Deloitte
- Nomura Research Institute
- Oliver Wyman
- OMMAX
- Orgvue
- Partners in Performance
- Roland Berger
- Strategy&
- Whiteshield Partners
- ZS Associates

### FINANCE

- AINDA - Energy & Infrastructure
- Akereos Capital
- Alchemy Partners
- Ambienta
- andwis group
- Asset Management One Co., Ltd
- Baltisse
- Banco BICE
- Banco Falabella
- Bank of England
- Bernstein
- BNV Capital
- Bridgepoint Capital
- British International Investment
- Central Bank of Mexico
- Cevian Capital
- Chiron Sports Group
- Cigna Ventures
- Citi
- Clearlake Capital Group
- Constructora Bisons Corporation (IFC)
- Corvest
- CVC Credit Partners
- CVC DIF
- Dai-ichi Life Holdings
- Daiwa Securities
- Danantara Asset Management
- Deutsche Bank
- Eastdil Secured
- EBRD
- Financial Services Agency, Government of Japan
- First Spark Ventures
- FRP Advisory
- Goldman Sachs
- Goldman Sachs Asset

### Management

- Gore Street Capital
- Hawasli Holdings
- International Finance Corporation (IFC)
- Jasper Ridge Partners
- Jefferies
- Kasikorn Bank
- Marshall Wace LLP
- Moelis & Company
- Moody's Investor Service
- Moontower Group
- Morgan Stanley
- Mornington Partners
- MUFG Bank
- NoBa Capital
- Nomura
- Nomura Asset Management
- Oxx
- People's Partnership
- Persistent
- PIMCO
- Polígono Capital
- Principles for Responsible Investment
- PT Bank Mandiri (Persero) Tbk
- Queen's Park Equity
- Quiñenco
- RBC
- Rocc Partners
- RTP Global
- RYSE Asset Management
- Sequent Group
- Shard Capital
- Siam Commercial Bank
- SICO
- Sixteenth Street Capital
- SMBC Manubank
- SoftBank Investment Advisors
- Sampo Japan Insurance Inc.
- StepStone Group, LP
- Stifel Financial Corp.
- Sumitomo Mitsui Trust Bank, Limited
- Terra Firma Capital Partners
- The Fulford Group
- Threadmark
- Three Ocean Partners
- Triton Partners
- TSB BANK
- Value Capital Partners
- Vanguard
- Victory Hill Capital Advisors LLP
- Waterland Private Equity
- Wren House Infrastructure Management

### TECHNOLOGY

- Aily Labs
- Amazon
- American Express
- Aptem
- Ascend Group
- ASOS
- CaixaBank Payments & Consumer
- Calla Lily
- Carpatha
- Cayes AS
- Checkatrade
- Cleo
- Elm Company
- Entobo
- Flex Financial
- Google
- Gopuff
- Graphcore
- Hawk-Eye Innovations Ltd
- Hitachi
- Humain
- Hume Health
- Instacart
- Joblogic
- Kula
- Line
- Mastercard
- Mastercard Advisors
- Mercado Libre
- Meta
- Microsoft
- Moloco
- Nexcede AI
- NTT DOCOMO
- Numeric
- Oracle
- Ori Biotech
- Ori Industries
- Oxford Instruments
- Panasonic Connect Co., Ltd.
- PayPal
- PillSorted
- Premier Marketing Public Company Limited
- Revolut
- Sacher AI
- Samsung Global Strategy Group
- Sana
- Saville Assessment
- SC Ventures by Standard Chartered
- Seccl
- Superteam
- TapTap Send
- TDC NET A/S
- The Pokemon Company International
- Thoughtful AI
- Tide
- TikTok
- Tova Earth

### Travel Collection

- Uber
- Valstone
- Visa
- VML, a WPP company
- Water Direct
- Whatnot
- Wintermute
- Yango
- Ziinv

### DIVERSIFIED

- AGC Inc
- Americana Restaurants
- Aramco
- ATONA
- BL Lifesciences Pvt Ltd
- CAA Portas
- Cencosud S.A.
- CIMIC
- Department for Science, Innovation and Technology
- DOAR
- Ekoon
- Eli Lilly and Company
- ENEOS Xplora
- Gemsons Precision Engineering Pvt Ltd
- Gibson Dunn
- Kanaiya Exports Private Limited
- Korea Gas Corporation
- KOREAN AIR
- Kraft Heinz Company
- Manchester United
- Merck Group
- Ministry of Industry and Mineral Resources
- Mitsui
- Monte
- Mourant
- NextEra Energy
- Novalfa Group
- Prime Minister's Office UK Government
- Professional Fighters League
- RBI - Restaurant Brands International
- Reliance Brand Limited
- SavATree
- SelfCare by Suman
- Somany Ceramics
- Spirax Sarco
- Sumitomo Corporation
- TechnoServe
- TT Limited
- TVS Motor Company
- Xignux
- Yashoda Hospitals

## CONSULTING

- Accenture
- AlixPartners
- Alvarez & Marsal
- Bain & Company
- Boston Consulting Group
- Deloitte
- EY-Parthenon
- FTI Consulting
- Grant Thornton
- Kearney
- L.E.K. Consulting
- Magnus Consulting
- McKinsey & Company
- Metyis
- Molnar Intelligence
- Oliver Wyman
- Roland Berger
- Strategy&
- The Sports Consultancy
- XpertEcosystem

## FINANCE

- 2070 Health
- A&G
- Absa Securities
- Advantary Capital Partners
- Ajeer Capital
- Ambianta
- Anacap Financial Partners LLP
- Antler
- Appian Capital Advisory LLP
- Araya Ventures
- Archangel
- Astanor
- Astorg
- Astra Holding
- Azura Partners
- Bain Capital
- Berenberg
- Birchway Capital
- BNVT Capital
- Bridgehill Partners
- British International Investment
- Capital Dynamics
- Castleforge
- CBRE
- Cevian Capital
- Cherry Ventures
- Chiron Sports Group
- Cinven
- Citi
- Clairvest Group
- Clearlake Credit
- Climate Bonds Initiative
- Collier Capital
- Coniston Peak
- Consumer Collective by Atrium
- Corporation (IFC)
- Corsair Capital
- Cranemere Group
- Creandum
- Cube Infrastructure

## Managers

- Deminor
- Eisvogel Group AG
- Elevation Advisors
- European Central Bank
- Evo Lake
- Fiera Infrastructure
- First Impact Partners
- Forth Management
- Fortress Investment Group LLC
- Founder One
- FPE Capital
- Globis Capital Partners
- Growth Partner Management LLP
- Guggenheim Securities
- H.I.G. Capital
- Hadean Ventures
- High House Investments
- High Water Venture Partners
- HSBC
- ICONIQ
- Inter-American Development Bank
- International Finance Corporation (IFC)
- Investcorp
- J-SATR
- J-Will Partners
- Joyance Partners
- Key Capital Partners
- KHP Ventures
- Lazard
- Longacre Group
- MACI Search Capital
- Manolin Capital
- Marathon Capital
- Mathura Holding Ltd
- Morgan Stanley
- Mubadala Capital
- Newland Syndicate
- Nordea
- Norrsken VC
- Norte Partners
- Notion Capital
- Novi Growth Partners
- Oakley Capital
- Ode Growth Partners
- OMERS
- Optum Ventures
- Orbis Investments
- Orienta Capital Partners
- PIMCO
- QuantumLight
- Quona Capital
- Rebalance Earth
- Redrice Ventures
- REVA Corporation
- Riviera Capital Partners
- Roxbi Capital
- Sackville Capital
- SailWealth Ltd
- Samara Capital
- SB Capital
- Smart Society Ventures

- Step Partners Europe GmbH
- Sussex Place Ventures
- Tern Capital
- The Carlyle Group
- The Friedkin Group
- TVM Capital Healthcare
- Valiant Asset Management
- Vanguard
- Vault Investments
- Vemi Capital
- Verdane
- Vericor Capital
- Volpi Capital
- Zacia Ventures

## TECHNOLOGY

- 2ndStage
- AfriSAF
- Aila Money
- Allye
- Amazon
- American Express
- Andes STR
- Apoha
- Apron
- Avatalk
- Avegen
- Bendi.ai
- Blockstone Capital
- BritBox
- Bytedance
- Calla Lily
- Carpata
- Circ
- Clarity
- Concentro
- Conveyo
- Corpay
- Creative Artists Agency (CAA)
- Crowdproperty
- Curve
- Decisional AI
- Duolingo
- Eland Cables
- elasticStage
- Elyos AI
- Enzai
- Eucalyptus
- Exacare AI
- EZFolders
- Inspector
- Flosendo
- ForeAI
- Forest
- Fortis Digital Solutions
- Fractional Jobs
- Fremantle
- Full Circle Labs
- GMAT Panda
- GoodMora
- Google
- Granular Energy
- Group.One
- Guidewire
- Healthtech-1
- Hoppy
- INDMoney
- ionSight
- Kaptur Software
- Ki Hydrogen
- Kiro
- Lalamove
- Leena AI
- Lendoe
- Levl
- LightHearted AI
- Liquify
- LITTA
- Maison Sport
- Marshmallow
- MARTYAI
- Mastercard
- Medroid AI
- Meobyr
- Microsol
- Mindu Tech
- Monzo
- mPixl Technologies
- Nolana AI
- Nul
- Ori Biotech
- OXcan
- Paddle
- PathwayBio
- Peetslist
- PentaBind
- Planet
- Plugify
- PPRO
- Procure Ai
- Prodigy Finance
- Prova Health
- Refloresta
- Relay Technologies
- Residual
- RideTandem
- Rightmove
- Sable Bio
- Sakana AI
- Samsung Global Strategy Group
- Sana
- SeeCubic
- SFR Medical
- Smart Bricks
- Solvo.ai
- Spotify
- StarCharge
- StellarPay
- Synthera AI
- TECHT Labs
- Terraspect
- Tesseract
- The Electric Car Scheme
- Thema
- TikTok
- Tokenate
- TrueLayer
- TTC Ventures
- twig
- UnderwriteMe
- Vaire
- Vavita
- Veremark
- VFX Financial
- Violet
- Visa
- Vosyn
- Weavr
- Wolters Kluwer
- Writer
- YuLife

## DIVERSIFIED

- 1014
- Associated British Ports
- Aurim Blair
- Bremont
- British Airways
- Clinton Health Access Initiative
- Connolly
- Eli Lilly and Company
- Es Fascinante
- Estée Lauder Companies Inc.
- Faro
- Great Ormond Street Hospital for Children NHS Foundation Trust
- Greyheath Hospitality
- Harri
- Kinetic Health
- King Abdullah Petroleum Studies and Research Center
- Kraft Heinz Company
- LBS Sustainability Programme
- London North West University Healthcare NHS Trust
- Louis Vuitton
- Masdar (Abu Dhabi Future Energy Company)
- NHS
- Novartis
- Octopus Energy
- OECD
- Phenna Group
- PT Mitra Adiperkasa
- RBI – Restaurant Brands International
- Right to Play
- RM Partners Cancer Alliance, NHS
- Royal Caribbean Group
- Santoni
- Selfridges Group
- Shake Shack
- Sports Business Syndicate
- Syensqo
- Tata Group
- TechnoServe
- TGP International
- Tiffany & Co.
- United Nations Framework Convention for Climate Change (UNFCCC)
- Worley Group



## About the Career Centre

We empower our students to shape diverse and impactful careers.

**Our Career Centre experts support students to develop the skills, behaviours and strategies needed to manage their careers proactively. This includes:**

- **Career coaching and advising.** Coaches help students define a direction and maintain focus on their goals. Our sector advisors provide sector-specific advice to deepen research and share market trends.
- **Career content and learning.** A blended digital and in-person curriculum to move students' career management skills to the next level across key development areas.
- **Career opportunities.** Access to a wide range of career and networking opportunities to engage with the market and employers.



**"The support I received from the Career Centre was genuinely valuable. Their availability and practical guidance played a meaningful role in my recruitment journey, and it always felt like they were personally invested in helping me move forward."**

**Asheem Jinsi** MBA2025  
Strategy & Operations Lead, Google

**97%**

of MBA2025 students engaged with Career Centre

**120+**

MBA careers-related workshops offered

**1,480+**

employers partnered with LBS

**2,000+**

job opportunities for MBAs advertised through LBS in 2024-25

## Sector advisors and career coaches

The Career Centre team consists of 40+ members, all of whom bring coaching expertise or relevant industry experience to support students in achieving their career goals. The team includes:



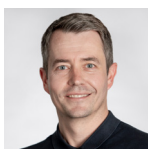
**Anne Alaoui**  
Head of MBA & MiF Careers



**Gerry Jennings**  
MBA Career Lead



**Richard Bland**  
Head of Finance Careers



**Daniel Lay**  
Head of Consulting Careers



**David Morris**  
Head of Technology Careers

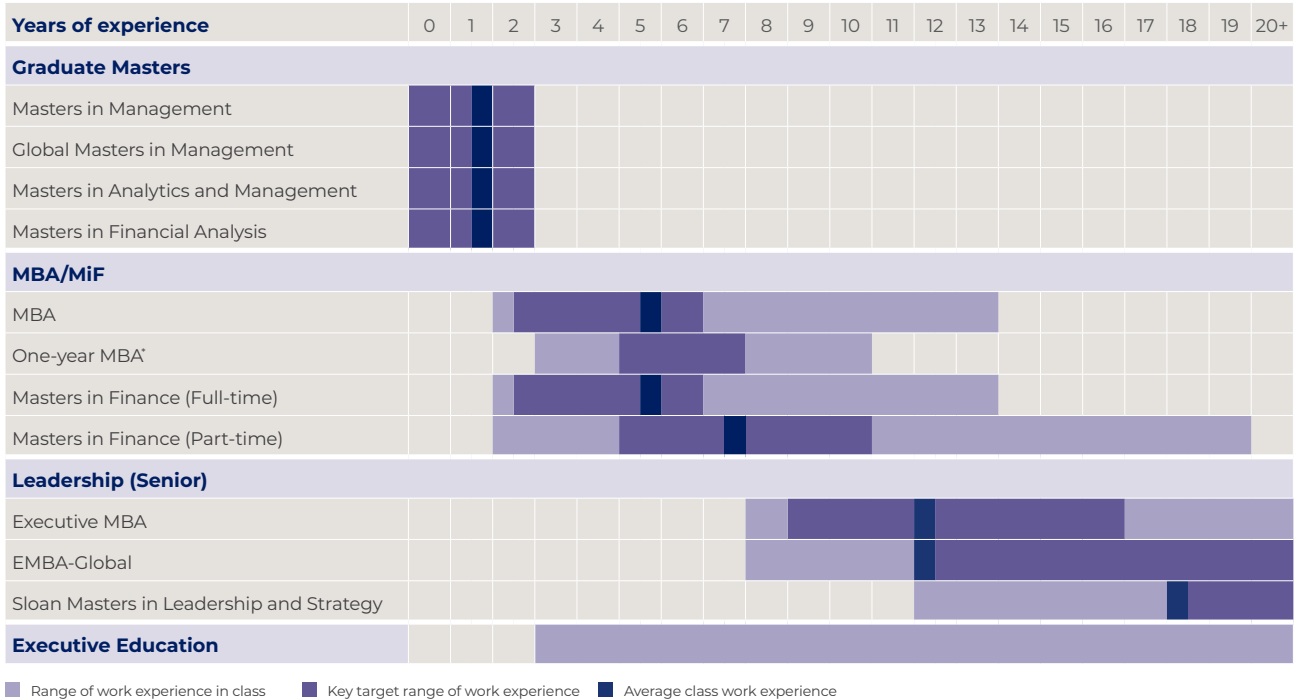


**Alyona Segline**  
Head of Diversified Careers



# Our programmes

London Business School can boost your capabilities and potential at every stage of your career.



\* Available to those who graduated three or more years ago with a Masters in Management or equivalent approved by EQUIS and/or AACSB or from the University of London.

## Graduate Masters

### Masters in Management

12-16 MONTHS | FULL-TIME | LONDON

For recent graduates with up to two years of full-time postgraduate work experience who want to kick-start a career in business.

### Global Masters in Management

24 MONTHS | FULL-TIME | LONDON AND SHANGHAI

For recent graduates with up to two years of full-time postgraduate work experience. Strong interest in Asia and knowledge of Mandarin highly recommended, but not mandatory.

### Masters in Analytics and Management

12-16 MONTHS | FULL-TIME | LONDON

For recent graduates with up to two years of postgraduate work experience, who are targeting a career in business and data analytics.

### Masters in Financial Analysis

12-16 MONTHS | FULL-TIME | LONDON

For recent graduates with up to two years of full-time postgraduate work experience who are looking to embark on a career in finance.

## Mid Career

### MBA

15-21 MONTHS | FULL-TIME | LONDON

For individuals who are looking to make a vertical shift in their career path, change industry or job function, or develop an entrepreneurial toolkit.

### One-year MBA

11 MONTHS | FULL-TIME | LONDON

For professionals with a masters in management looking to further their careers and take their entrepreneurial ideas further.

### Masters in Finance (Full-time)

10-16 MONTHS | FULL-TIME | LONDON

For experienced finance professionals wishing to advance their career or change their area within finance.

### Masters in Finance (Part-time)

22 MONTHS | PART-TIME | LONDON

For experienced finance professionals looking to further their career while still working.

## Leadership (Senior)

### Executive MBA

17-22 MONTHS | PART-TIME, IN-PERSON OR BLENDED | LONDON OR DUBAI

For those who want to accelerate their career into general management or move beyond their technical or functional specialism.

### EMBA-Global

20 MONTHS | PART-TIME | LONDON AND NEW YORK

For dynamic, mid-career managers and professionals who are highly ambitious and have, or aspire to have, transnational responsibilities.

### Sloan Masters in Leadership and Strategy

12 MONTHS | FULL-TIME | LONDON

Designed to prepare experienced senior managers for their next career challenge.

## Find out more

### Masters Programmes

+44 (0)20 7000 7500  
masters@london.edu

### Executive Education

+44 (0)20 7000 7390  
execinfo@london.edu

All admissions decisions are taken in accordance with best equal opportunities practice.

London  
Business  
School

---

London Business School  
Regent's Park  
London NW1 4SA  
United Kingdom  
Tel: +44 (0)20 7000 7000  
[london.edu](http://london.edu)