

External Hotel Partners London

Academic Year 23/24
Aug 2023

- Campus Services and Procurement have agreed rates with 9 hotels in London, which are valid until 31st July 2024 (with the exception of the Dorset Square, which is valid till December 2023). The rates are available to all members of the London Business School Community. These rates are not based on last room availability, so may be closed out during peak times. In order to guarantee the rate, the reservation must be made as far in advance as possible.
- Individual bookings must be made directly with the hotel selected, using the relevant contact details for the property. In order to secure the corporate rate, please ensure you clearly state London Business School when contacting the property to make your reservation. Where possible, use an london.edu email address, or reference the programme and/or event you are attending.
- All bookings and rates are subject to availability and are bound by the terms and conditions in each property. All bookings should be made as far in advance as possible, as our rates may not be available during the high seasons. All rates are based on single occupancy, supplements will apply for double/ family rooms. Our rates are set for specific room categories, should these not be available, an alternative may be offered and a supplement may apply
- London Business School rates are NOT available to third party travel agents. Should a booking be made online via a 3rd party reservation/ travel site, or via an agent, the terms and conditions of the rate booked, or the specific agent terms and conditions will be applicable and you will not be eligible for any additional London Business School benefits.
- Group booking terms and conditions will apply to block reservations, particularly in relation to cancellation timeframes. During some periods group rates may be higher, subject to availability.
- All bookings that are made & are to be paid for by LBS must have a Purchase Order reference number, either LBS or CMD. Contracts must only be signed by the company paying for the booking, LBS does not guarantee as per TOM policy. Group contracts must be signed by the company that are guaranteeing/ paying for the booking.
- For further assistance, including Serviced Apartment options & alternative hotels, please contact Sam Bishop – sbishop@london.edu

London hotels are generally extremely busy from August – December and March – July, so all bookings should be made as far in advance as possible, the cancellation terms for individual bookings are generally around 24 hours, with groups generally around 30 days (subject to size & availability), so key is to book sooner rather than later, as there is scope for cancellation.

As our rates are not based on last room availability, should a property see their occupancy increase, they will close out all corporate rates, at which point, we will generally receive around 15% discount on the best available rate showing on the hotel's website.

Restricted availability dates could include:-

Notting Hill Carnival	26 - 28 August 2023
DSEI Conference	11 - 19 September 2023
World Travel Market	6 – 9 November 2023
December	Whole month
Rugby 6 Nations	February & March 2024
Easter	29 March – 1 April 2024
London Marathon	19 - 21 April
London Fashion Week	15 – 19 September 2023 & February 2024
Chelsea Flower Show	21 – 25 May 2024
Champions League Final	30 May – 2 June 2024
Royal Ascot	18 – 22 June 2024
London Pride	July 2024
Wimbledon	1 – 14 July 2024
Formula One – Silverstone	July 2024
Cricket Games at Lords	June & July 2024

Danubius Hotel Regents Park

Hotel Details

Rating 4*
Rooms 360
Food & Beverage outlets 3
Meeting Rooms 10
Fitness Centre Yes
Website
www.danubiushotels.com
Distance from LBS 12 min

Rate – Individual & Group

Standard Room £160
Deluxe Room £180

Cancellation

Groups 28 days
Individual 24 hrs

Reservations

Individual:
reservation@danubiuslondon.co.uk

Groups:

group.reservations@danubiuslondon.co.uk



The Dorset Square Hotel

Hotel Details

Rating 4*
Rooms 38
Food & Beverage outlet 1
Fitness Centre No
Website
www.firmdalehotels.com
Distance from LBS 5 min

Rate - Individual
Superior Room £275

Group rates on request

Cancellation
Individual 24 hrs

Reservations

Individual & Groups:
reservations@dorsetsquarehotel.co.uk



Hotel Details

Rating 5*
Rooms 351
Food & Beverage outlets 4
Meeting Rooms 10
Fitness Centre Yes
Website
www.landmarklondon.co.uk
Distance from LBS 9 min

Rate - Individual
Superior Room £309
Deluxe Room £330

Group rates on request

Cancellation
Groups TBC per individual group
Individual 24hrs

Reservations
Individual:
Reservations@thelandmark.co.uk

Groups:
Event.sales@thelandmark.co.uk



Hotel Details

Rating	4*
Rooms	118
Food & Beverage outlets	2
Meeting Rooms	4
Fitness Centre	Yes
Website	
www.holmeshotel.com	
Distance from LBS	12 min

Rate - Individual	
Superior Double	£279
Deluxe Double	£309

Group rates on request (max 25 rooms)

Cancellation	
Groups (max 25 rooms)	30 days
Individual	24 hrs

Reservations
Individual:
reservations@holmeshotel.com

Groups:
hhgroupsadmin@pphe.com



Thistle London Marble Arch (AMBA)

Hotel Details

Rating 4*
Rooms 692
Food & Beverage outlets 3
Meeting Rooms 15
Fitness Centre Yes
Website
www.thistle.com/marble-arch
Distance from LBS 20 min

Rate – Individual & Group

Classic Room (Jan – Jun & Sep - Nov) £219
Classic Room (Dec & July) £286

Cancellation

Groups (TBC on size) 30 days minimum
Individual 24 hrs

Reservations

Individual:
bookma@thistle.co.uk
<https://www.clermonthotel.group/londonbusinessschool>

Groups (new booking)

groupsma@thistle.co.uk

Groups (confirmed booking)

groupsadmin@thistle.co.uk



The Cumberland Hotel (Hard Rock Hotel London)

Hotel Details

Rating 4*
Rooms 900
Food & Beverage outlets 3
Meeting Rooms 14
Fitness Centre Yes
Website
www.hardrockhotels.com/london
Distance from LBS 25 min

Rate – Individual & Group

Classic Room (Jan – Jun & Sep - Nov) £219
Classic Room (Dec & July) £286

Cancellation

Groups (TBC on size) 30 days minimum
Individual 24 hrs

Reservations

Individual:

stay.thecumberland@guoman.co.uk

<https://www.clermonthotel.group/londonbusinessschool>

Groups (new)

groups.thecumberland@guoman.co.uk

Groups (confirmed booking)

groupsadmin.thecumberland@guoman.co.uk



Holiday Inn Regents Park

Hotel Details

Rating 3*
Rooms 339
Food & Beverage outlets 2
Meeting Rooms 9
Fitness Centre No
Website www.ihg.com
Distance from LBS 20 min

Rate - Individual
Standard Room £160
Executive Room £185

Group rates on request

Cancellation
Groups (TBC on size) 30 days minimum
Individual 24 hrs

Reservations
Individual:
reservations@hiregentspark.co.uk

Groups:
reservations@hiregentspark.co.uk



Wilde by StayCity Paddington

Hotel Details

Rating 4* (Aparthotel)

Rooms 249

Food & Beverage outlet 1

Fitness Centre Yes

Website

www.staycity.com/wilde/london/paddington

Distance from LBS 20 min

Rate - Individual

Studio Apartment

1-7 nights £212

7-14 nights £197

14+ nights £187

Rate – Group £205

Cancellation

Groups 30 days

Individual 24 hrs

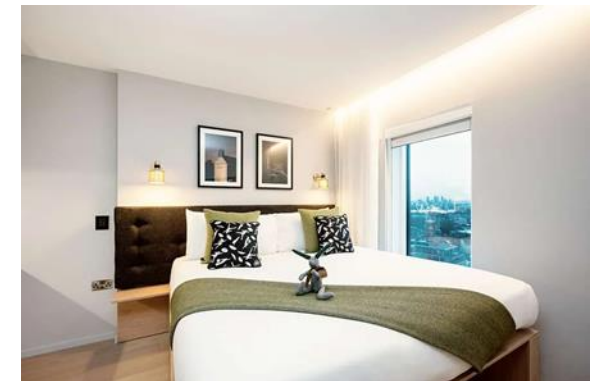
Reservations:

Individual:

wilde.paddingtonsales@staycity.com

Groups:

Martin.Haymes@staycity.com



Melia White House

Hotel Details

Rating 4*
Rooms 581 & 112
Apartments
Food & Beverage outlet 2
Fitness Centre Yes
Website www.melia.com

Distance from LBS 20 min

Rate – Individual
Deluxe Room £225
Premium Room £255
The Level Room £300

Group rates on request

Cancellation
Groups (TBC on size) 30 days
minimum
Individual 24 hrs

Reservations:
Individual: www.melia.com
Corporate code 00114472JSC

Groups:
Groups.london@melia.com



