

# Masters in Financial Analysis employment report

GRADUATING CLASS OF 2023



London  
Business  
School

## Introduction from the Head of Career Centre

I am delighted to report that 90% of students seeking employment from our 2023 graduating Masters in Financial Analysis (MFA) class received an offer within three months of graduation, with the majority (88%) entering careers in finance to make their mark in this sector.

This is a pleasing result given challenging employment markets. Notwithstanding the difficult environment, our graduates secured opportunities globally, albeit 56% chose to start their careers in the UK. Indeed, London Business School continues to enjoy a unique advantage in offering students the opportunity to network face-to-face with prospective employers and industry specialists across a wide range of sectors.

Whichever location, sector and company our graduates chose, we congratulate and wish them well. We equally look forward to following their progress in the years to come.



**Zoe McLoughlin**

Executive Director of Career Centre  
London Business School



**“The LBS Career Centre has been a cornerstone of my professional development throughout the programme. From insightful recruitment events to company presentations, every interaction has been enriching. These opportunities not only provided practical insights into various industries but also facilitated invaluable networking connections, equipping me with the tools and confidence to pursue my career goals ambitiously.”**

**Andrei Petrescu** MFA2023  
Investment Associate, Temasek



## MFA2023 class profile



**198**  
students



**52**  
nationalities\*



**42%**  
female



**22**  
average  
age (years)

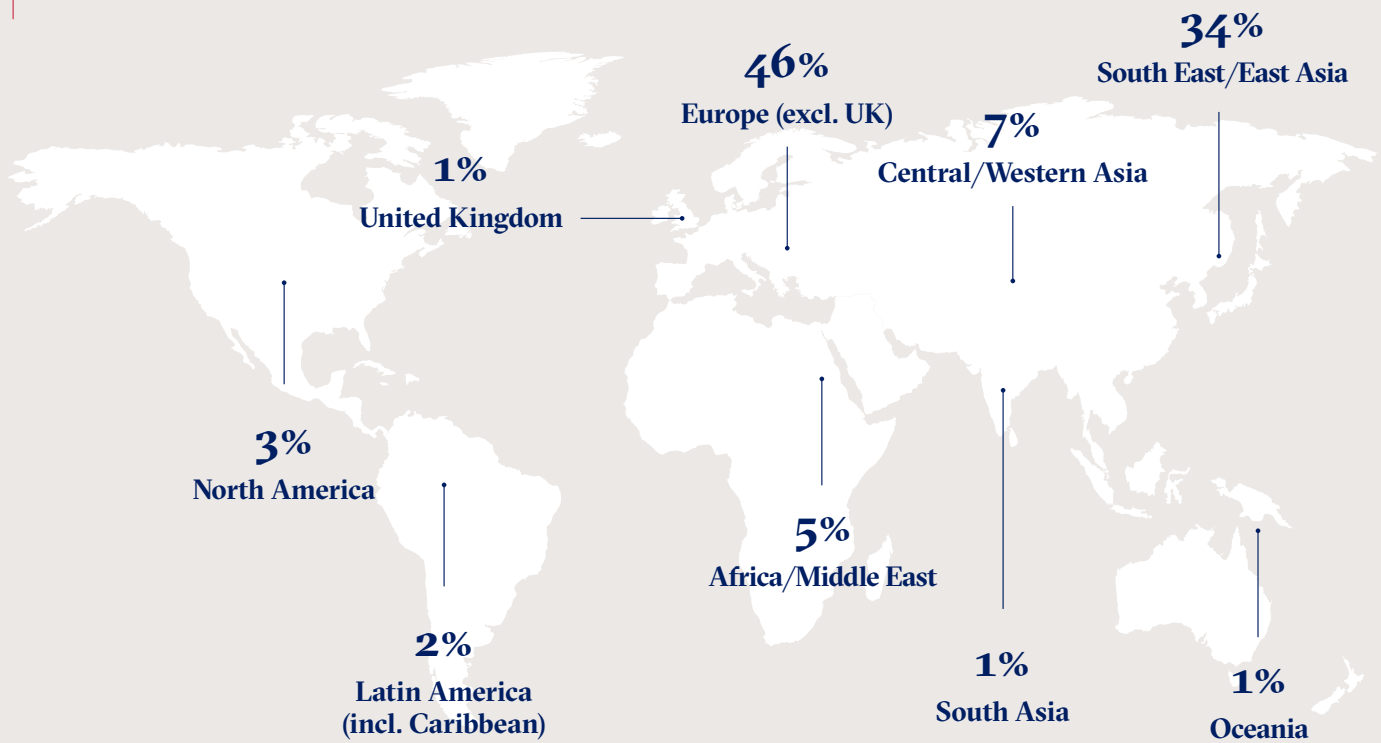


**702**  
GMAT score  
(average)

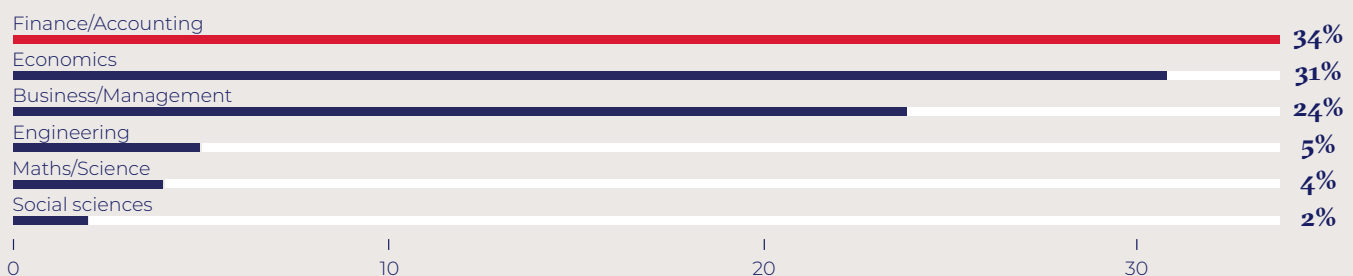
### Regional background



**99%**  
international  
students

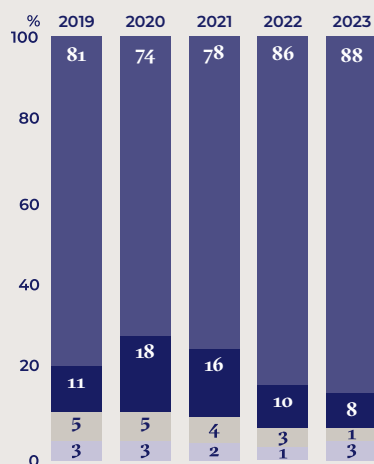


### Undergraduate study discipline



\* All nationalities are self-declared.

## Sector destinations



### Sector breakdown 2023

FINANCE	88%
● Investment Banking	51%
● Private Equity	17%
● Investment Management	14%
● Real Estate	3%
● Venture Capital	2%
● Central Banks/Ministries/Regulation/Public Finance	1%
NON-FINANCE	12%
● Consulting	8%
● Technology*	1%
● Diversified**	3%

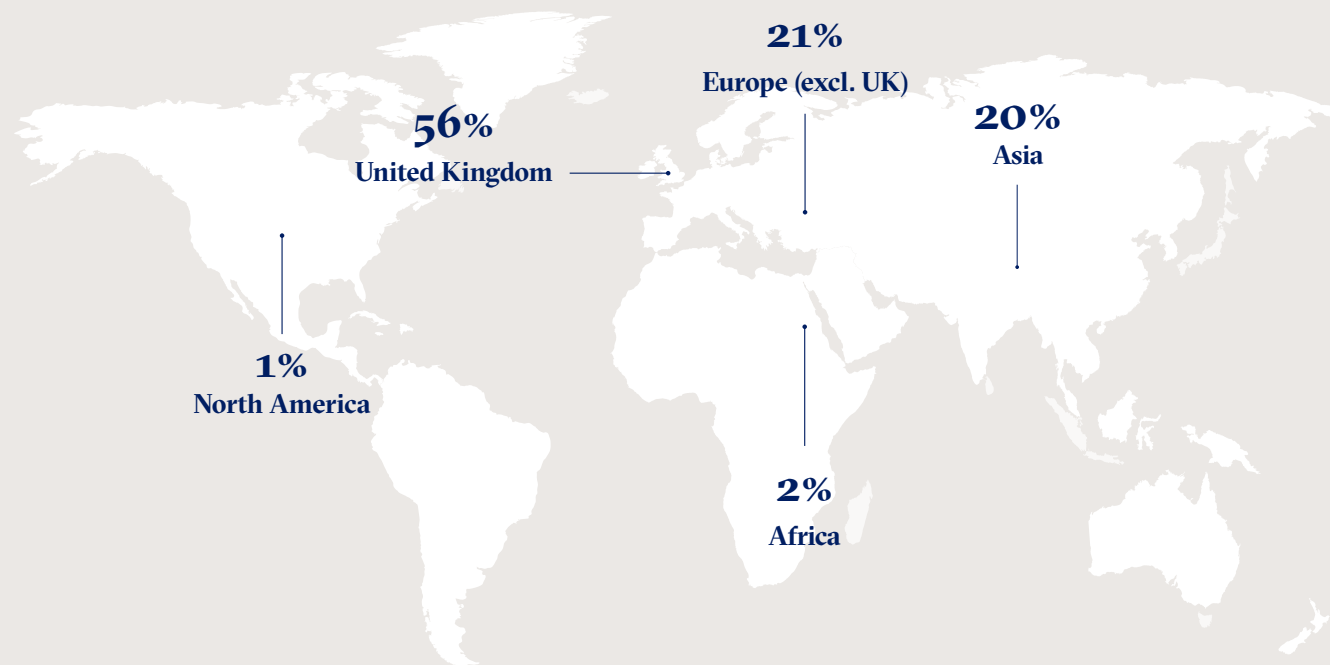
\*Technology includes Fintech and Information Technology & Services.

\*\*Diversified includes Consumer & Retail, Energy and Social Impact.

## Hiring employers

Accuracy	EigenPhi	Notion Capital
Admiralty Harbour Capital	Evercore	Oxy Capital
Ardian	Fidelity Investments	Paragon Partners
Ares Management	Fremman Capital	Pareto Securities
Aspect Capital	GL Capital	Partners Group
Asset Value Investors	Goldman Sachs	PIMCO
Astorg	Groupe Bruxelles Lambert	PJT Partners
Augusta & Co	Guosheng Securities	Point72
Aurelius	Hannam & Partners	Privium Fund Management
Bank of America	Harris Williams & Co	PSP Investments
Bank of China	Harvest Fund Management	Publica
Barclays	HSBC	RBC
Baringa Partners	IK Partners	Reorg
BDA Partners	InfraRed Capital Partners	Robert W. Baird & Co
BlackRock	ING Group	Rothschild & Co
BlueOrchard Finance	J.P. Morgan	Rothschild Five Arrows Private Equity
BNP Paribas	Jefferies	Shell
Boston Consulting Group	Jones Lang LaSalle	Signals Venture Capital
bp	Keensight Capital	SilverMile Capital
Bryan, Garnier & Co	Kuaishou Technology	Simon-Kucher & Partners
ByteDance	Kx Advisors	SSE plc
Carnegie Investment Bank	LaSalle Investment Management	Sustainable and Green Finance Institute
CDI Global	Lazard	Temasek
Centerview Partners	LGT Capital Partners	The Carlyle Group
Chenavari Investment Managers	Macquarie Asset Management	TorchPartners
China Renaissance	Marks Baughan	TowerBrook Capital Management
CICC	Marlborough Partners	UAB Hanner
Circularity Capital	McKinsey & Company	UBS
Citi	Mediobanca	UniAdvise
Clipway	Mihoyo Technology	Vicente & Partners
Connect Ventures	Mirastar	Visa
Copper Run	Moelis & Company	Waha Capital
CPI	Morgan Stanley	Waterland Private Equity
Cygnus Capital	Natixis	Wells Fargo
Deutsche Bank	Nevastar Finance	World Economic Forum
Edmond de Rothschild	Nomura	

## Job location



### MFA2023 graduates went to work at organisations in 18 locations around the world:

- Azerbaijan
- Belgium
- Canada
- China Mainland
- Denmark
- France
- Germany
- Hong Kong SAR
- Lithuania
- Luxembourg
- Norway
- Portugal
- Singapore
- Spain
- Switzerland
- United Arab Emirates
- United Kingdom
- United States (USA)



**“In addition to the robust academic curriculum and elective offering that have fortified my professional acumen, the LBS network played a crucial role in deepening my understanding of the finance industry and the recruitment process. The generous guidance from my peers and alumni has not only provided insights into various sectors but has also broadened my interests, thereby enriching my professional journey.”**

**Jelena Vlainic** MFA2023  
Investment Team Intern, Cinven



## Salary information by industry

Industry	UK Pounds			US Dollars*			International Dollars**		
	Min	Max	Mean	Min	Max	Mean	Min	Max	Mean
<b>OVERALL</b>	<b>£8,485</b>	<b>£110,167</b>	<b>£53,588</b>	<b>\$10,753</b>	<b>\$135,656</b>	<b>\$65,789</b>	<b>\$18,155</b>	<b>\$229,029</b>	<b>\$86,275</b>
Other compensation	£1,000	£75,000	£18,008	\$1,216	\$95,332	\$22,279	\$1,449	\$113,529	\$28,434
<b>FINANCE</b>	<b>£8,485</b>	<b>£110,167</b>	<b>£53,827</b>	<b>\$10,753</b>	<b>\$135,656</b>	<b>\$65,996</b>	<b>\$18,155</b>	<b>\$229,029</b>	<b>\$86,836</b>
Other compensation	£1,000	£75,000	£21,005	\$1,216	\$95,332	\$25,839	\$1,449	\$113,529	\$32,857
<b>NON-FINANCE</b>	<b>£11,276</b>	<b>£88,162</b>	<b>£49,713</b>	<b>\$14,118</b>	<b>\$105,121</b>	<b>\$61,602</b>	<b>\$32,416</b>	<b>\$165,295</b>	<b>\$75,738</b>
Other compensation	£1,128	£16,500	£21,518	£1,412	£20,973	£9,196	£3,242	£24,976	£11,529

## Salary information by location

Location ***	UK Pounds			US Dollars*			International Dollars**		
	Min	Max	Mean	Min	Max	Mean	Min	Max	Mean
<b>Overall</b>	<b>£8,485</b>	<b>£110,167</b>	<b>£53,588</b>	<b>\$10,753</b>	<b>\$135,656</b>	<b>\$65,789</b>	<b>\$18,155</b>	<b>\$229,029</b>	<b>\$86,275</b>
Other compensation	£1,000	£75,000	£18,008	\$1,216	\$95,332	\$22,279	\$1,449	\$113,529	\$28,434
<b>Africa</b>	<b>£62,491</b>	<b>£82,680</b>	<b>£69,502</b>	<b>\$77,594</b>	<b>\$101,288</b>	<b>\$86,635</b>	<b>\$126,628</b>	<b>\$165,295</b>	<b>\$141,383</b>
Other compensation***	-	-	-	-	-	-	-	-	-
<b>Asia</b>	<b>£8,485</b>	<b>£110,167</b>	<b>£59,532</b>	<b>\$10,753</b>	<b>\$135,656</b>	<b>\$72,347</b>	<b>\$18,155</b>	<b>\$229,029</b>	<b>\$122,213</b>
Other compensation	£1,128	£52,853	£17,702	\$1,412	\$66,462	\$21,876	\$3,242	\$112,209	\$37,019
<b>Europe</b>	<b>£14,975</b>	<b>£102,713</b>	<b>£48,463</b>	<b>\$18,087</b>	<b>\$124,973</b>	<b>\$59,385</b>	<b>\$24,502</b>	<b>\$126,734</b>	<b>\$71,839</b>
Other compensation	£3,180	£24,562	£11,700	\$3,984	\$29,885	\$14,134	\$5,397	\$37,836	\$16,406
<b>UK</b>	<b>£18,000</b>	<b>£85,000</b>	<b>£52,885</b>	<b>\$22,235</b>	<b>\$103,829</b>	<b>\$65,143</b>	<b>\$26,479</b>	<b>\$123,649</b>	<b>\$77,578</b>
Other compensation	£1,000	£75,000	£21,278	\$1,216	\$95,332	\$26,477	\$1,449	\$113,529	\$31,531

58%

of students who accepted an offer received other compensation/bonuses

\* Conversion rates as per date of offer.

\*\* Purchasing power parity (PPP) included due to the high number of students who have salaries in non-US dollar currencies. The World Bank's implied PPP rate of exchange was used to equalise the purchasing power across economies.

\*\*\* Insufficient data points to report salary data for North America and Africa (Other compensation).

Other compensation includes sign-on and end-of-year bonus, where we have sufficient data. Salary data does not include sponsored or self-employed students, in accordance with MBA CSEA guidelines.

## About the Career Centre

We want our students to develop skills, behaviours and strategies to manage their careers proactively. Our Career Centre experts support students as they shape their career goals.

### Our comprehensive career support involves:

- **Career coaching and advising.** Coaches help you define a direction and maintain focus on your goals. Our sector advisors provide sector-specific advice to deepen your own research and share market trends.
- **Career learning.** A blended digital and in-person curriculum to move students' career skills to the next level, to affect career progression.
- **Career opportunities.** Access to a wide range of career and networking opportunities, including over 200 employer events annually.



**“The MFA has been instrumental in giving me the confidence that I needed to excel in interviews and to ultimately receive a job offer in London. The programme taught me relevant hard and soft skills that I utilise daily and gave me exposure into how to work effectively in an international team setting and environment.”**

Reuben Schreiber MFA2023  
Investment Banking Analyst, Marks Baughan

76%

of MFA students engaged with the Career Centre

180+

workshops offered during 2022–2023 academic year

3,660+

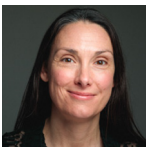
employers partnered with by LBS

2,600+

job opportunities for Graduate Masters students advertised through LBS in 2022–23

## Specialist coaches and career advisors

The Career Centre comprises 45 permanent staff, most of whom have real-world coaching and commercial experience to help students achieve their career goals. Team members include:



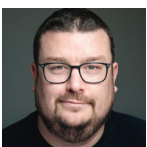
**Kira Hughes**  
Head of Graduate Masters Careers



**Osman Haneff**  
Institute of Entrepreneurship and Private Capital



**Daniel Lay**  
Head of Consulting Careers



**David Morris**  
Head of Technology and Media Careers



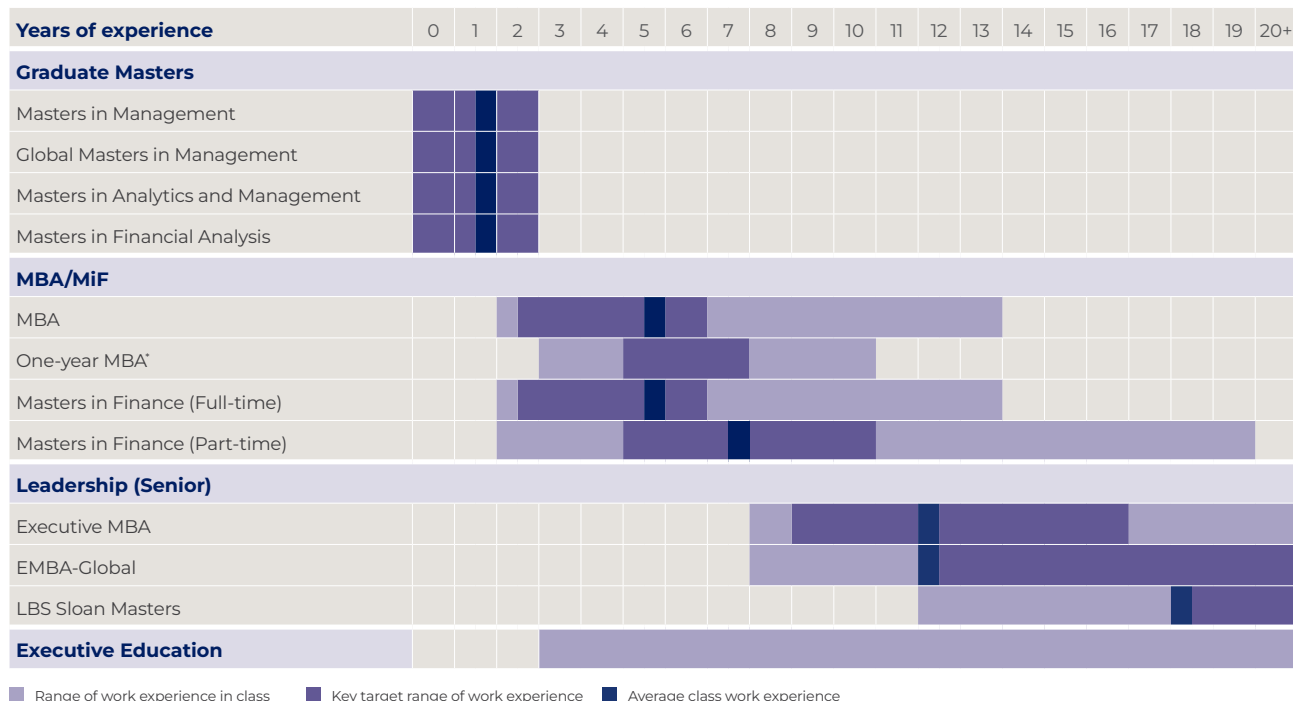
**Richard Bland**  
Head of Finance Careers



**Alyona Segline**  
Head of Diversified Careers

## Our programmes

London Business School can boost your capabilities and potential at every stage of your career.



\* Available to those who have graduated three or more years ago with a Masters in Management or equivalent approved by EQUIS and/or AACSB or from the University of London.

### Graduate Masters

#### Masters in Management

12-16 MONTHS | FULL-TIME | LONDON

For recent graduates with up to two years of full-time postgraduate work experience who want to kick-start a career in business.

#### Global Masters in Management

24 MONTHS | FULL-TIME | LONDON AND SHANGHAI

For recent graduates with up to two years of full-time postgraduate work experience. Strong interest in Asia and knowledge of Mandarin highly recommended, but not mandatory.

#### Masters in Analytics and Management

12-16 MONTHS | FULL-TIME | LONDON

For recent graduates with up to two years of postgraduate work experience, who are targeting a career in business and data analytics.

#### Masters in Financial Analysis

12-16 MONTHS | FULL-TIME | LONDON

For recent graduates with up to two years of full-time postgraduate work experience who are looking to embark on a career in finance.

### Mid Career

#### MBA

15-21 MONTHS | FULL-TIME | LONDON

For individuals who are looking to make a vertical shift in their career path, change industry or job function, or develop an entrepreneurial toolkit.

#### One-year MBA

11 MONTHS | FULL-TIME | LONDON

For professionals with a masters in management looking to further their careers and take their entrepreneurial ideas further.

#### Masters in Finance (Full-time)

10-16 MONTHS | FULL-TIME | LONDON

For experienced financial professionals wishing to advance their career or change their area within finance.

#### Masters in Finance (Part-time)

22 MONTHS | PART-TIME | LONDON

For experienced financial professionals looking to further their career while still working.

### Leadership (Senior)

#### Executive MBA

20 MONTHS | PART-TIME | LONDON OR DUBAI

Designed for those who want to accelerate their career into general management or move beyond their technical or functional specialism.

#### EMBA-Global

20 MONTHS | PART-TIME | LONDON AND NEW YORK

For dynamic, mid-career managers and professionals who are highly ambitious and have, or aspire to have, transnational responsibilities.

#### LBS Sloan Masters in Leadership and Strategy

12 MONTHS | FULL-TIME | LONDON

Designed to prepare experienced senior managers for their next career challenge.

### Find out more

#### Masters Programmes

+44 (0)20 7000 7500  
masters@london.edu

#### Executive Education

+44 (0)20 7000 7390  
execinfo@london.edu

All admissions decisions are taken in accordance with best equal opportunities practice.



London  
Business  
School

---

London Business School  
Regent's Park  
London NW1 4SA  
United Kingdom  
Tel: +44 (0)20 7000 7000  
london.edu