

# Masters in Financial Analysis Employment Report

Graduating class of 2025

London  
Business  
School

---

# Introduction from the Head of Career Centre

**I am delighted to share that 92% of our 2025 Masters in Financial Analysis (MFA) class secured an offer within three months of graduation—an impressive achievement in today’s dynamic and highly competitive global job market.**

Our graduates have demonstrated remarkable resilience and determination, securing roles in an environment that has remained highly competitive for a prolonged period. Their success reflects both their drive and readiness for today’s global employment market, as well as the continued demand from employers for highly skilled finance talent.

Finance remains the leading destination for our MFA graduates, reinforcing the programme’s position as a global leader in developing future-ready finance professionals. While investment banking remains the most common career path, graduates have also secured roles across asset management, private equity, commercial banking and a range of other finance functions.

London remains central to the MFA experience, with 66% of graduates choosing to begin their careers in the UK, reflecting the city’s position as a leading global hub for finance employers.

Our commitment to supporting students throughout an evolving and competitive recruitment cycle is reflected in over 230 workshops, 1,650 job opportunities shared and more than 3,100 one-to-one coaching sessions delivered by our Career Centre.

We are incredibly proud of the impact our graduates are already making across organisations and markets, and we look forward to following their journeys and celebrating their continued success in the years ahead.



**Zoe McLoughlin**  
Executive Director  
of Career Centre  
London Business  
School

“The MFA provided rigorous training in accounting, valuation, financial modelling and restructuring, foundations I will apply in my role as a Consultant in Strategy and Transactions at EY-Parthenon when tackling complex strategic challenges. Beyond academics, the programme expanded my international network, exposed me to diverse cultures and connected me with students across the MBA, EMBA and MiF programmes, which broadened my perspective on leadership and career paths.”



**Toshiro  
Michael Kato  
Maldonado**  
MFA2025  
Consultant,  
Strategy and  
Transactions,  
EY-Parthenon

## 90%

accepted an offer within three months of graduation

## 92%

received an offer within three months of graduation

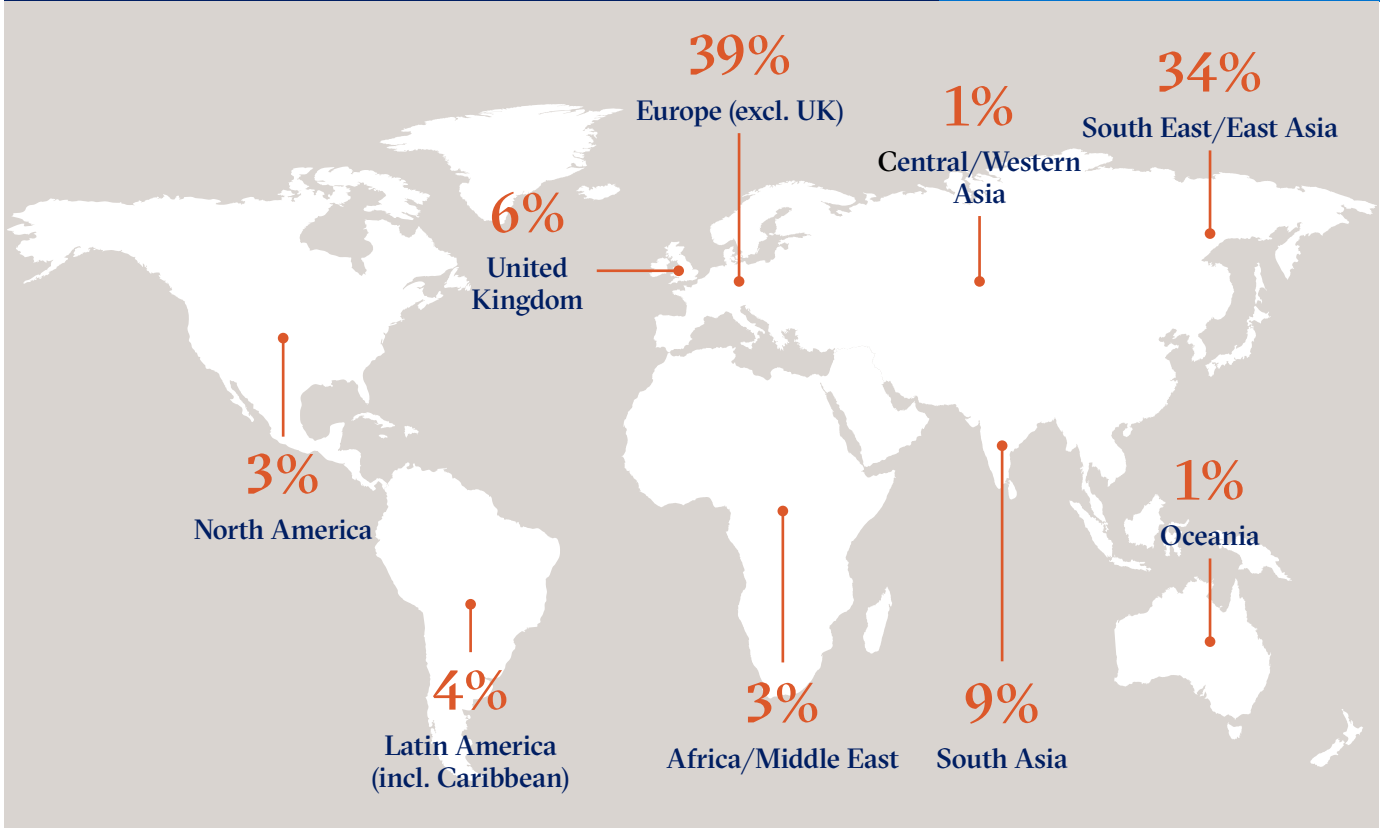
## 98%

reporting rate

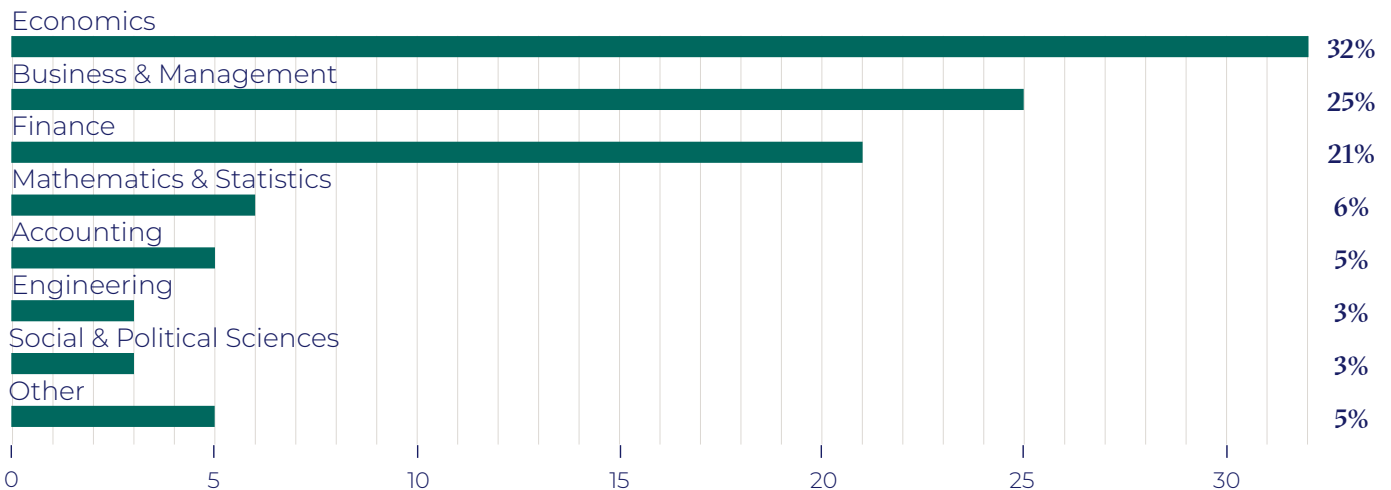
The three-month employment rate is calculated in compliance with Career Services & Employer Alliance (CSEA) reporting standards. Students returning to their sponsoring employers are not included in the three-month rate.

# MFA2025 class profile

<p><b>216</b> students</p> <p><b>22</b> average age</p> <p><b>51%</b> women</p>	<p><b>42</b> nationalities*</p> <p><b>703</b> GMAT score (average)</p>	<p><b>Regional background</b></p> <p><b>94%</b> international students</p>
---	--	--



## Undergraduate study discipline

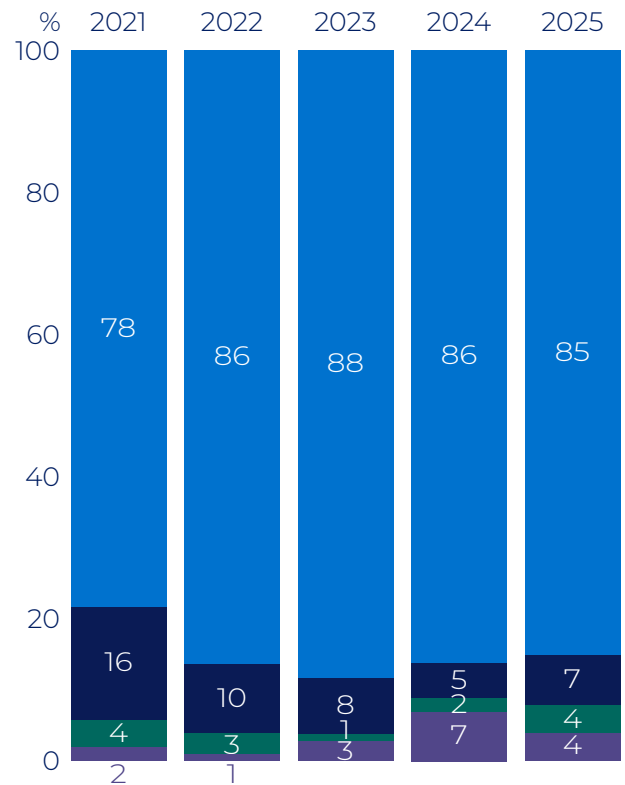


\* All nationalities are self-declared.

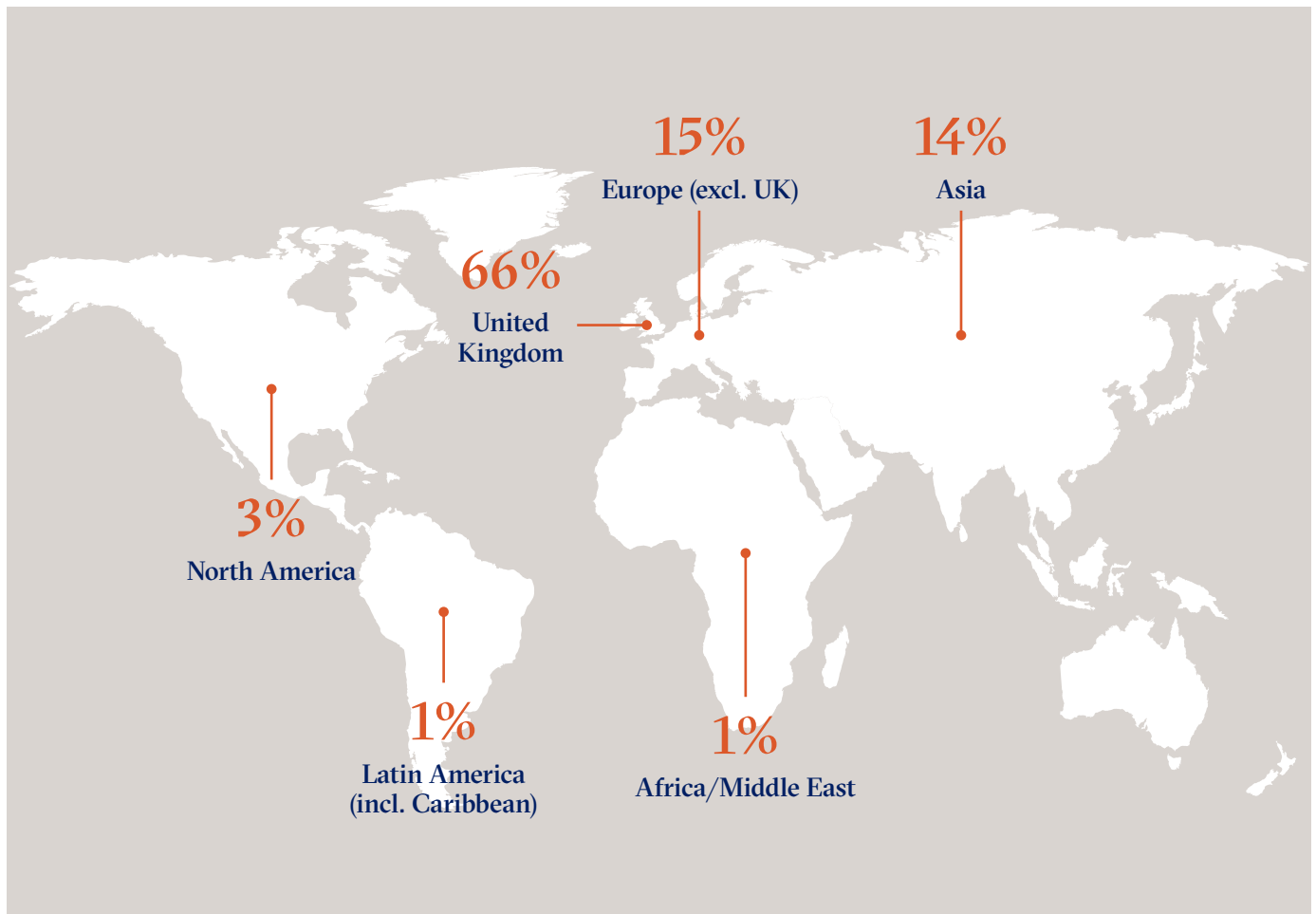
# Sector destinations

## Sector breakdown 2025

Finance	85%
Investment Banking	50%
Private Equity	14%
Investment Management	11%
Commercial Banking/Project Finance	6%
Finance – Other	4%
Consulting	7%
Diversified	4%
Technology	4%



# Job location



MFA2025 graduates went to work at organisations in the following 19 locations:

Brazil  
Canada  
China Mainland  
France  
Germany  
Guatemala  
Hong Kong S.A.R.

India  
Italy  
Japan  
Norway  
Portugal  
Spain  
Switzerland

Taiwan  
United Arab Emirates  
United Kingdom  
United States (USA)  
Vietnam

# Salary information

## Salary information by sector

Industry	UK Pounds			US Dollars*			International Dollars**		
	Min	Max	Mean	Min	Max	Mean	Min	Max	Mean
Overall	£9,928	£119,315	£53,866	\$13,600	\$163,445	\$73,788	\$19,090	\$236,393	\$88,073
Other compensation	£982	£156,247	£25,653	\$1,345	\$214,037	\$35,142	\$1,484	\$315,191	\$41,832
<b>Finance</b>	<b>£9,928</b>	<b>£119,315</b>	<b>£55,674</b>	<b>\$13,600</b>	<b>\$163,445</b>	<b>\$76,266</b>	<b>\$19,090</b>	<b>\$236,393</b>	<b>\$90,024</b>
Other compensation	£982	£156,247	£29,892	\$1,345	\$214,037	\$40,948	\$1,484	\$315,191	\$48,169
<b>Non-Finance</b>	<b>£20,002</b>	<b>£93,688</b>	<b>£44,972</b>	<b>\$27,401</b>	<b>\$128,339</b>	<b>\$61,606</b>	<b>\$37,609</b>	<b>\$172,507</b>	<b>\$78,233</b>
Other compensation	£1,438	£35,041	£8,699	\$1,970	\$48,001	\$11,916	\$3,948	\$52,974	\$15,216

**56%** of students who accepted an offer received other compensation and bonuses

## Salary information by location

Location	UK Pounds			US Dollars*			International Dollars**		
	Min	Max	Mean	Min	Max	Mean	Min	Max	Mean
Overall	£9,928	£119,315	£53,866	\$13,600	\$163,445	\$73,788	\$19,090	\$236,393	\$88,073
Other compensation	£982	£156,247	£25,573	\$1,345	\$214,037	\$35,032	\$1,484	\$315,191	\$41,832
Africa/Middle East	£79,907	£109,500	£94,704	\$109,462	\$150,000	\$129,731	\$172,507	\$236,393	\$204,450
Other compensation	£10,933	£146,000	£78,466	\$14,976	\$200,000	\$107,488	\$23,602	\$315,191	\$169,396
Asia	£14,660	£80,508	£38,886	\$20,082	\$110,285	\$53,269	\$40,915	\$194,598	\$98,559
Other compensation	£1,600	£50,090	£14,886	\$2,192	\$68,617	\$20,392	\$4,293	\$95,577	\$33,539
Europe	£9,928	£107,352	£46,011	\$13,600	\$147,058	\$63,029	\$19,090	\$119,378	\$68,893
Other compensation	£1,925	£25,765	£12,664	\$2,636	\$35,294	\$17,348	\$3,948	\$36,463	\$19,669
Latin America (incl. Caribbean)	£18,648	£39,490	£29,069	\$25,546	\$54,095	\$39,820	\$53,268	\$124,993	\$89,130
Other compensation	£4,936	£4,936	£4,936	\$6,762	\$6,762	\$6,762	\$15,624	\$15,624	\$15,624
UK	£22,999	£119,315	£58,016	\$31,506	\$163,445	\$79,474	\$34,769	\$180,376	\$87,707
Other compensation	£982	£156,247	£28,398	\$1,345	\$214,037	\$38,901	\$1,484	\$236,209	\$42,931
North America	£42,574	£42,574	£42,574	\$58,321	\$58,321	\$58,321	\$68,782	\$68,782	\$68,782
Other compensation***	-	-	-	-	-	-	-	-	-

\* Conversion rates as per date of offer.

\*\* Purchasing power parity (PPP) included due to the high number of students who have salaries in non-US dollar currencies. The World Bank's implied PPP rate of exchange was used to equalise the purchasing power across economies.

\*\*\* Insufficient data points to report.

Other compensation includes sign-on and end-of-year bonus, where we have sufficient data.

Salary data does not include sponsored or self-employed students, in accordance with CSEA guidelines.

# Employers

Altea Partners  
 Altor Equity Partners  
 Apollo Global Management LLC  
 Aptura AI  
 Ardian  
 Arma Partners  
 Ashbourne Capital  
 Astris Finance  
 Augusta & Co  
 Avenir  
 Bain & Company  
 Bank of America  
 Barclays  
 Berenberg  
 Blackstone  
 Bloomberg  
 Boston Consulting Group  
 Bregal Unternehmerkapital GmbH  
 Canaccord Genuity  
 Carnegie Investment Bank  
 Centerview Partners  
 China Cinda Asset Management  
 CIBC Capital Markets  
 CICC  
 CIGP  
 Citi  
 Clayton, Dubilier & Rice  
 CMC Capital Partners  
 Cornerstone Research  
 CVC Capital Partners  
 DBS Bank  
 Deutsche Bank  
 DP World  
 EBCO Group  
 EC M&A  
 European Technology Group  
 Evercore  
 EY-Parthenon  
 Fidelity International  
 FTI Andersch  
 General Atlantic  
 Goldman Sachs  
 GP Bullhound  
 Greenhill & Co.  
 Headway Capital Partners  
 Houlihan Lokey  
 ING Group  
 Intesa Sanpaolo

JD.com  
 Jefferies  
 JM Financial Limited  
 JPMorgan Chase  
 Keensight Capital  
 Kroll  
 Lincoln International  
 LionTree  
 Longspur Capital  
 MARK Capital Management  
 Marlborough Partners  
 Marshall Wace LLP  
 Maven Securities  
 Mediobanca  
 Melqart Asset Management  
 Meroka  
 Moelis & Company  
 Moody's Corporation  
 Morgan Stanley  
 NatWest  
 NIO  
 Nomura  
 Oxy Capital  
 Partners Capital  
 Perella Weinberg Partners  
 PJT Partners  
 Point72  
 Prospect Advisors  
 Roland Berger  
 Rothschild & Co.  
 Rothschild & Co. Five Arrows  
 Salesforce  
 Santander CIB  
 Seabury Capital  
 Shopee  
 Société Générale  
 Squarepoint  
 Standard Chartered Bank  
 STJ Advisors  
 Stonehage Fleming  
 Summa Equity  
 The Brattle Group  
 Tower Peak Partners LLP  
 Triple Point  
 UBS  
 UG Investment Advisers  
 Verdier & Co  
 Warburg Pincus

“The MFA programme has equipped me to understand, evaluate, and apply both qualitative and quantitative information in practical contexts, from financial models to complex data analyses. It has also prepared me to lead with positivity, thrive in multicultural environments, navigate uncertainty, and engage diverse stakeholders, all while applying critical thinking and rigorously testing innovative ideas.”



**Tim Herten**  
MFA2025  
Investment Banking  
Analyst, Evercore

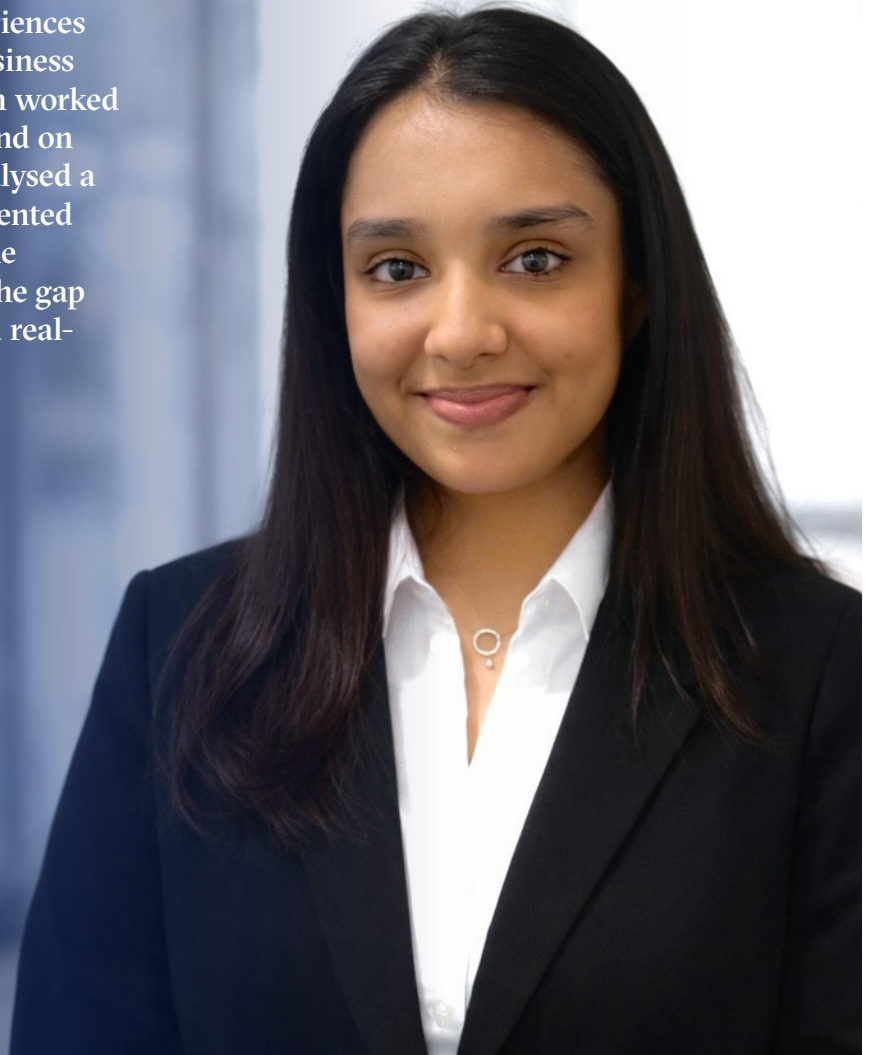
“It’s the global mindset and close-knit community that truly set London Business School apart. I know I can connect with alumni across industries and geographies, at any stage of my career.”



**Anita Yimin  
Liu** MFA2025  
Investment  
Banking Off-  
Cycle Analyst,  
HSBC

“One of the most impactful experiences was participating in London Business Challenge Week, where my team worked with the fintech company Abound on a live consulting project. We analysed a real business challenge and presented strategic recommendations to the company, which helped bridge the gap between classroom learning and real-world decision-making.”

**Eesita Poddar** MFA2025  
Corporate Banking Analyst,  
Deutsche Bank



## About the Career Centre

We want our students to develop skills, behaviours and strategies to manage their careers proactively. Our Career Centre experts support students as they shape their career goals.

Our comprehensive career support involves:

- **Career coaching and advising.**  
Coaches help you define a direction and maintain focus on your goals. Our sector advisors provide sector-specific advice to deepen your own research and share market trends.
- **Career learning.**  
A blended digital and in-person curriculum to move students' career skills to the next level and promote career progression.
- **Career opportunities.**  
Access to a wide range of career and networking opportunities, including over 200 employer events annually.

# 89%

of MFA students engaged with the Career Centre

# 230+

workshops offered during 2024–2025 academic year with the Career Centre

# 900+

Graduate Masters employers partnered with the Career Centre

# 1,650+

job opportunities for Graduate Masters students advertised through London Business School in 2024–2025

## Specialist coaches and career advisors

Our student-facing experts leverage industry and coaching experience, working alongside operations, communications, and events teams to provide seamless, well-rounded career support.



**Kira Hughes**  
Head of Graduate Masters Careers



**Daniel Lay**  
Head of Consulting Careers



**Alexandra Leahu**  
Banking Sector Lead



**Richard Bland**  
Head of Finance Careers



**Alyona Segline**  
Head of Diversified Careers



**Tim Mann**  
Asset Management Sector Lead

# Our programmes

London Business School can boost your capabilities and potential at every stage of your career.

Years of experience	0	1	2	3	4	5	6	7	8	9	10	11	12	13	14	15	16	17	18	19	20+	
Graduate Masters																						
<b>Masters in Management</b>		■	■																			
<b>Global Masters in Management</b>		■	■																			
<b>Masters in Analytics and Management</b>		■	■																			
<b>Masters in Financial Analysis</b>		■	■																			
MBA/MiF																						
<b>MBA</b>			■	■	■	■	■	■	■	■	■	■	■	■	■	■	■	■	■	■	■	■
<b>One-year MBA*</b>				■	■	■	■	■	■	■	■	■	■	■	■	■	■	■	■	■	■	■
<b>Masters in Finance (Full-time)</b>			■	■	■	■	■	■	■	■	■	■	■	■	■	■	■	■	■	■	■	■
<b>Masters in Finance (Part-time)</b>				■	■	■	■	■	■	■	■	■	■	■	■	■	■	■	■	■	■	■
Leadership (Senior)																						
<b>Executive MBA</b>										■	■	■	■	■	■	■	■	■	■	■	■	■
<b>EMBA-Global</b>										■	■	■	■	■	■	■	■	■	■	■	■	■
<b>Sloan Masters in Leadership and Strategy</b>																					■	■
Executive Education																						

■ Range of work experience in class   ■ Key target range of work experience   ■ Average class work experience

## Graduate Masters

### Masters in Management

**12–16 months | Full-time | London**  
For recent graduates with up to two years of full-time postgraduate work experience who want to kick-start a career in business.

### Global Masters in Management

**24 months | Full-time | London and Shanghai**  
For recent graduates with up to two years of full-time postgraduate work experience. Strong interest in Asia and knowledge of Mandarin highly recommended, but not mandatory.

### Masters in Analytics and Management

**12–16 months | Full-time | London**  
For recent graduates with up to two years of postgraduate work experience, who are targeting a career in business and data analytics.

### Masters in Financial Analysis

**12–16 months | Full-time | London**  
For recent graduates with up to two years of full-time postgraduate work experience who are looking to embark on a career in finance.

## Mid Career

### MBA

**15–21 months | Full-time | London**  
For individuals who are looking to make a vertical shift in their career path, change industry or job function, or develop an entrepreneurial toolkit.

### One-year MBA\*

**11 Months | Full-time | London**  
For professionals with a masters in management looking to further their careers and take their entrepreneurial ideas further.

### Masters in Finance (Full-time)

**10–16 months | Full-time | London**  
For experienced finance professionals wishing to advance their career or change their area within finance.

### Masters in Finance (Part-time)

**22 months | Part-time | London**  
For experienced finance professionals looking to further their career while still working.

## Leadership (Senior)

### Executive MBA

**17–22 Months | Part-time, in-person or blended | London or Dubai**  
For those who want to accelerate their career into general management or move beyond their technical or functional specialism.

### EMBA-Global

**20 months | Part-time | London and New York**  
For dynamic, mid-career managers and professionals who are highly ambitious and have, or aspire to have, transnational responsibilities.

### Sloan Masters in Leadership and Strategy

**12 months | Full-time | London**  
Designed to prepare experienced senior managers for their next career challenge.

\* Available to those who have graduated three or more years ago with a Masters in Management or equivalent approved by EQUIS and/or AACSB or from the University of London.

# Find out more

## **Masters Programmes**

+44 (0)20 7000 7500  
masters@london.edu

## **Executive Education**

+44 (0)20 7000 7390  
execinfo@london.edu

## **London Business School**

**Regent's Park**  
**London NW1 4SA**  
**United Kingdom**  
**+44 (0)20 7000 7000**  
**london.edu**

**london.edu/mfa**