

Masters in Management Employment Report

GRADUATING CLASS OF 2024



London
Business
School

Introduction from the Head of Career Centre

I am delighted to share that 93% of our 2024 Masters in Management (MiM) class secured an offer within three months of graduation — an outstanding achievement in today's dynamic and highly competitive global job market.

Financial services emerged as the top hiring sector, attracting 36% of our graduates, with employers valuing the holistic business acumen and interpersonal strengths that define our graduates. Consulting also remained a key destination, demonstrating the strong demand for their analytical expertise and problem solving capabilities.

Our global perspective continues to be a significant advantage, enabling students to secure roles across international markets. At the same time, 41% of graduates have chosen to advance their careers in London, reflecting the city's status as a world-leading financial and business hub with unparalleled professional opportunities.

A London Business School education is more than a degree — it's a transformative experience that equips students with the knowledge, networks and skills to thrive. Whether launching their career or taking the next step in their professional journey, our graduates are prepared to excel in an ever-evolving world. We are incredibly proud of their achievements and look forward to celebrating their continued success in the years ahead.



Zoe McLoughlin

Executive Director of Career Centre
London Business School



“LBS gave me the chance to work with incredibly smart individuals, coming from all industries and various parts of the world, very early in my career. Collaborating with highly motivated peers in the classroom and being mentored by MBA students with industry experience prepared me for successful teamwork in my current role.”

Eliya Panchova MiM2024
Business Analyst, McKinsey & Company



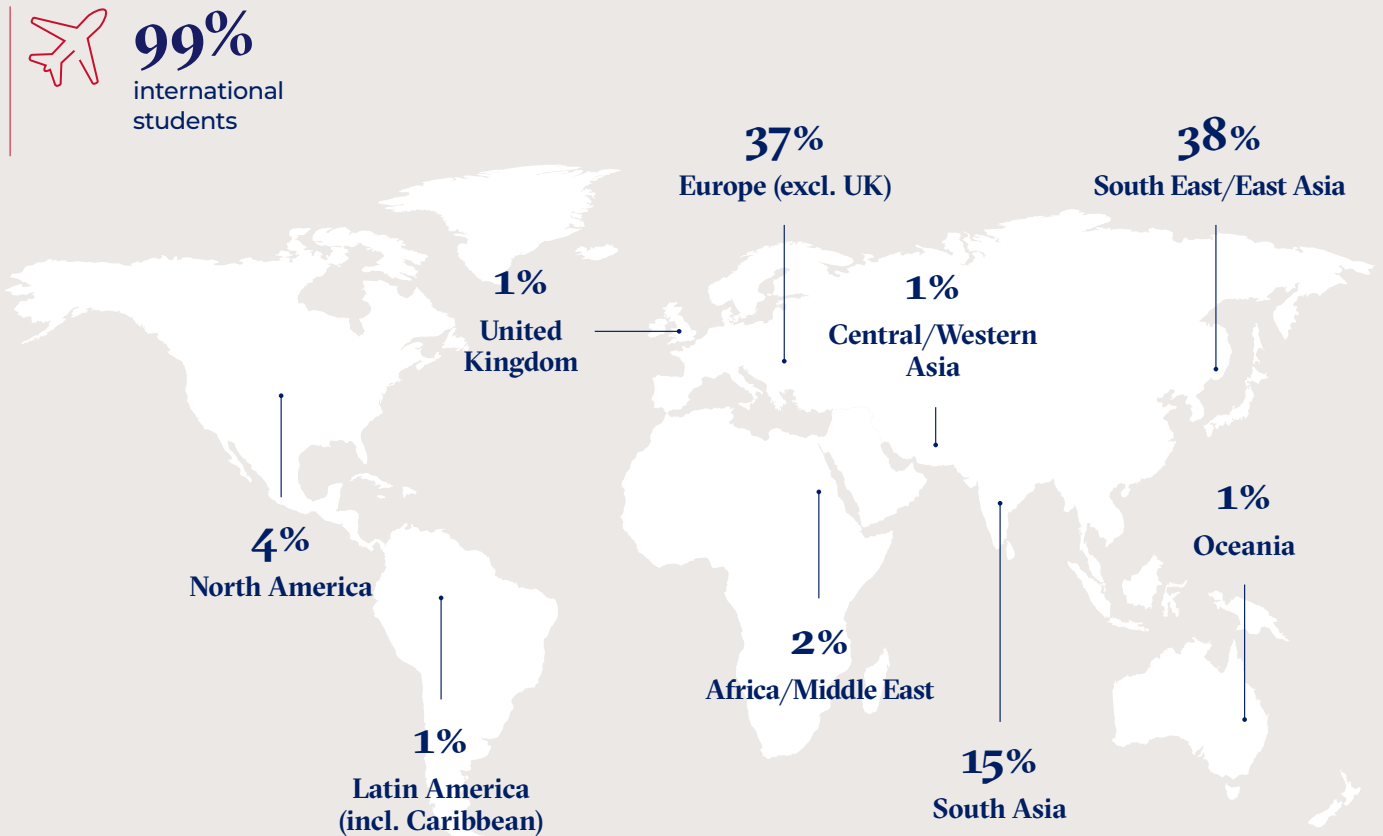
Masters in Management

Class profile

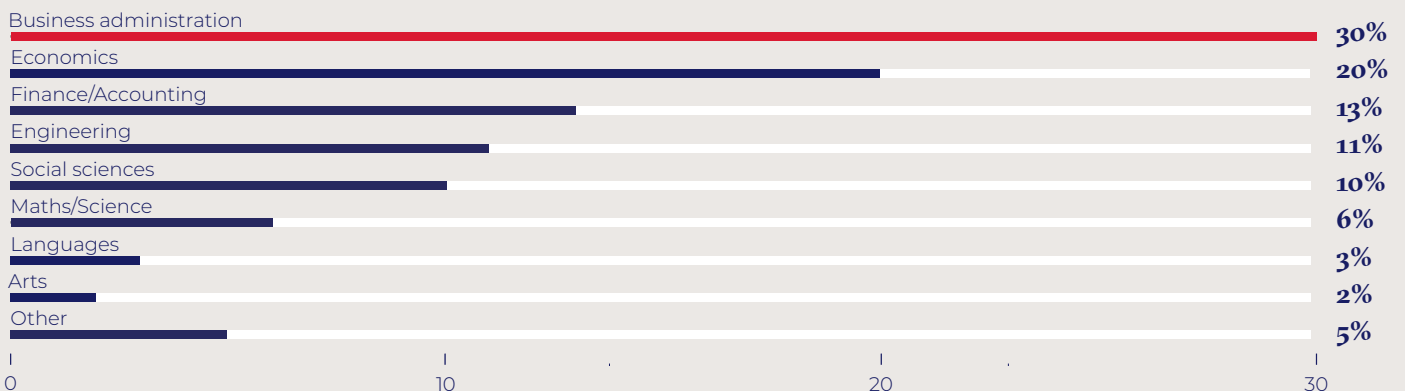
MiM2024 class profile



Regional background

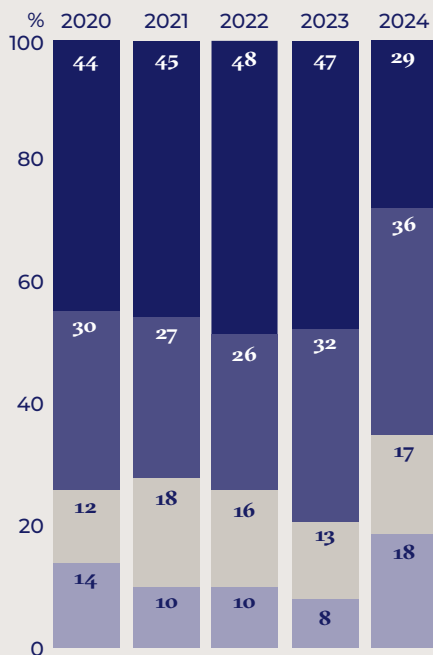


Undergraduate study discipline



* All nationalities are self-declared.

Sector destinations



Sector breakdown 2024

CONSULTING	29%
FINANCE	36%
● Investment Banking	22%
● Private Equity	6%
● Investment Management	4%
● Venture Capital	2%
● Finance – Other*	2%
TECHNOLOGY	17%
● Information Technology	6%
● Fintech	3%
● Internet/eCommerce	3%
● Telecommunications	2%
● Technology – Other**	3%
DIVERSIFIED	18%
● Consumer and Retail	6%
● Industrials	4%
● Energy	2%
● Healthcare	2%
● Diversified – Other***	4%

Top employers

Boston Consulting Group	9	Accenture	2
HSBC	5	Antler	2
Kearney	5	Bain & Company	2
OC&C Strategy Consultants	5	Bank of America	2
Oliver Wyman	5	BNP Paribas	2
Amazon	4	Capgemini Invent	2
McKinsey & Company	4	Cartier International	2
Morgan Stanley	4	ING Group	2
Strategy&	4	Jefferies	2
AB InBev	3	Mastercard	2
Citi	3	PAI Partners	2
JP Morgan Chase	3	Procter & Gamble	2
Rothschild & Co.	3	Roland Berger	2
Xiaomi Technology	3	Urban Company	2



“The LBS Career Centre was incredibly helpful during my time at LBS. They took the time to review my CV and cover letter multiple times, even at short notice. They were always available to provide guidance and support, especially when things didn’t go as planned. They also connected me with industry professionals at my current company, which really helped broaden my network and opportunities.”

Akankshi Vaishya MiM2024
Global Outperformer Trainee, Hilti Group

* Finance – Other: Central Banks/Ministries/Regulation/Public Finance, Insurance and Pension Services, Real Estate, Services & Products.

** Technology – Other: EdTech, HealthTech, Media - Publishing, Mobility.

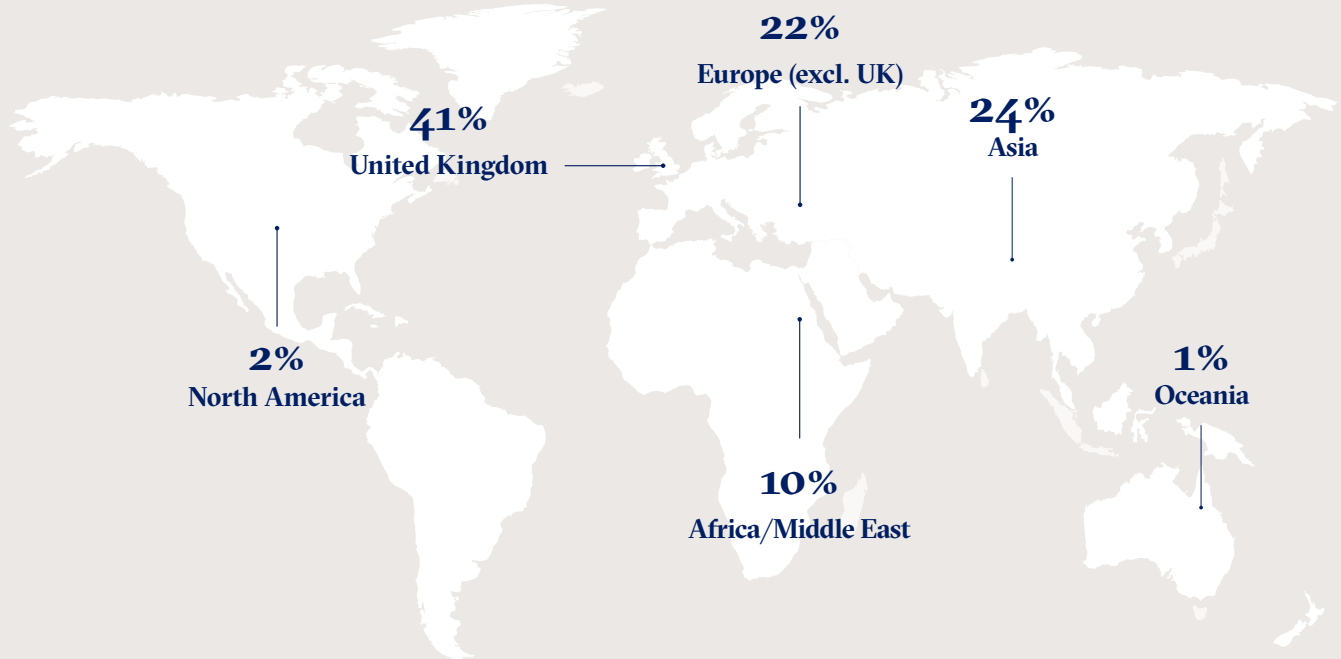
*** Diversified – Other: Education/Training, Social Impact, Sports.

Job location



97%

international
students



MiM2024 graduates went on to work at organisations in the following 29 locations:

- Australia
- Belgium
- Canada
- China Mainland
- Denmark
- France
- Germany
- Greece
- Hong Kong SAR
- Hungary
- India
- Indonesia
- Italy
- Kazakhstan
- Luxembourg
- Malta
- Morocco
- Netherlands
- Norway
- Portugal
- Qatar
- Singapore
- Sweden
- Switzerland
- Taiwan
- Thailand
- United Arab Emirates
- United Kingdom
- United States (USA)

Masters in Management

Salary information

Salary information by sector

Industry	UK Pounds			US Dollars*			International Dollars**		
	Min	Max	Mean	Min	Max	Mean	Min	Max	Mean
OVERALL	£6,638	£144,566	£44,541	\$8,327	\$174,607	\$56,706	\$14,189	\$268,435	\$79,195
Other compensation	£553	£51,000	£12,483	\$702	\$63,674	\$15,847	\$961	\$91,964	\$23,228
CONSULTING	£19,277	£103,947	£53,451	\$24,473	\$132,230	\$68,163	\$33,488	\$160,405	\$89,935
Other compensation	£3,000	£27,479	£10,676	\$3,786	\$35,646	\$13,555	\$5,818	\$69,396	\$18,629
FINANCE	£6,638	£108,000	£44,845	\$8,327	\$137,882	\$57,015	\$17,001	\$268,435	\$85,884
Other compensation	£1,705	£51,000	£18,026	\$2,169	\$63,674	\$22,794	\$4,500	\$91,964	\$34,942
TECHNOLOGY	£12,125	£56,800	£35,068	\$15,587	\$76,000	\$45,047	\$21,328	\$108,284	\$65,074
Other compensation	£3,390	£38,192	£11,856	\$4,358	\$50,000	\$15,258	\$7,667	\$60,272	\$23,630
DIVERSIFIED	£8,164	£144,566	£37,229	\$10,369	\$174,607	\$47,066	\$14,189	\$162,358	\$61,412
Other compensation	£553	£20,000	£6,686	\$702	\$25,326	\$8,451	\$961	\$30,529	\$11,566

52%
of students who accepted an offer received
other compensation and bonuses

Salary information by location

Location***	UK Pounds			US Dollars*			International Dollars**		
	Min	Max	Mean	Min	Max	Mean	Min	Max	Mean
OVERALL	£6,638	£144,566	£44,541	\$8,327	\$174,607	\$56,706	\$14,189	\$268,435	\$79,195
Other compensation	£553	£51,000	£12,483	\$702	\$63,674	\$15,847	\$961	\$91,964	\$23,228
Africa/Middle East	£6,638	£77,115	£49,217	\$8,327	\$101,281	\$62,210	\$22,091	\$160,405	\$99,268
Other compensation	£1,897	£19,911	£11,188	\$2,379	\$23,961	\$13,994	\$5,995	\$37,948	\$22,447
Asia	£16,630	£108,000	£41,983	\$21,187	\$137,882	\$53,818	\$41,248	\$268,435	\$104,775
Other compensation	£2,131	£37,000	£12,048	\$2,670	\$47,237	\$15,414	\$5,198	\$91,964	\$30,009
Europe	£8,164	£144,566	£44,221	\$10,369	\$174,607	\$55,824	\$14,189	\$162,358	\$69,084
Other compensation	£553	£40,438	£10,003	\$702	\$46,766	\$12,436	\$961	\$63,991	\$15,963
UK	£25,000	£100,000	£44,675	\$31,686	\$123,446	\$57,014	\$38,195	\$148,807	\$68,728
Other compensation	£3,000	£51,000	£14,878	\$3,800	\$63,674	\$19,021	\$4,581	\$76,756	\$22,928

* Conversion rates as per date of offer.

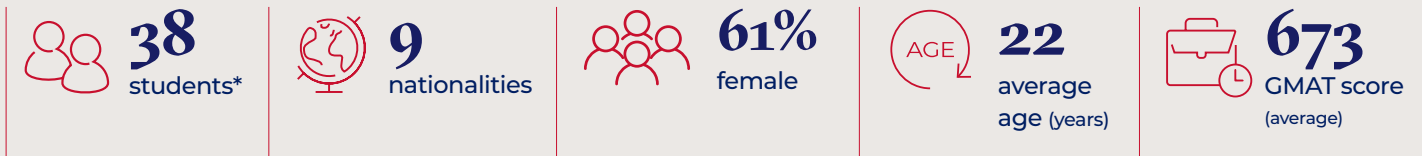
** Purchasing power parity (PPP) included due to the high number of students who have salaries in non-US dollar currencies. The World Bank's implied PPP rate of exchange was used to equalise the purchasing power across economies.

*** Insufficient data points to report salary data for North America and Oceania.

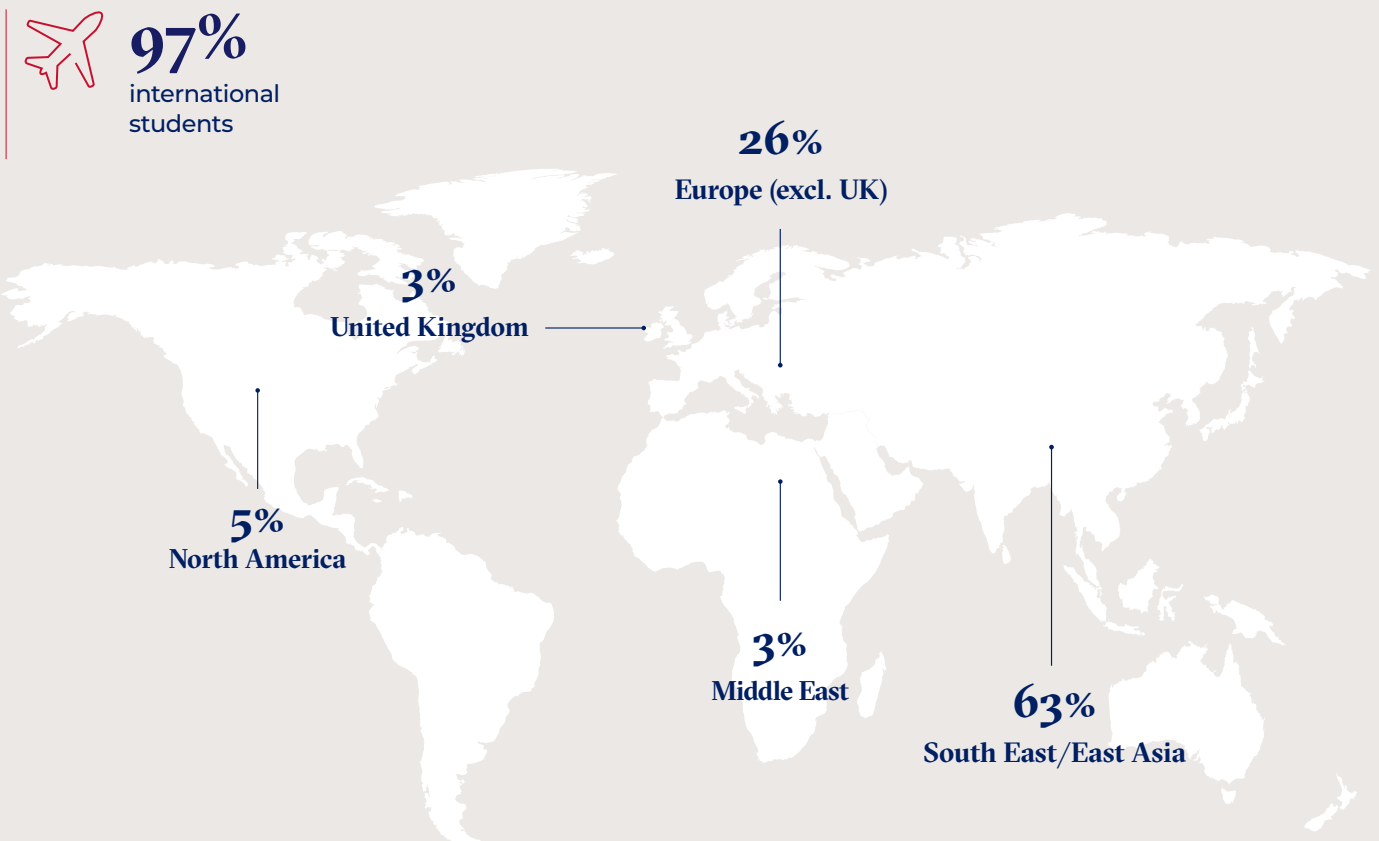
Other compensation includes sign-on and end-of-year bonus, where we have sufficient data. Salary data does not include sponsored or self-employed students, in accordance with CSEA guidelines.

Class profile

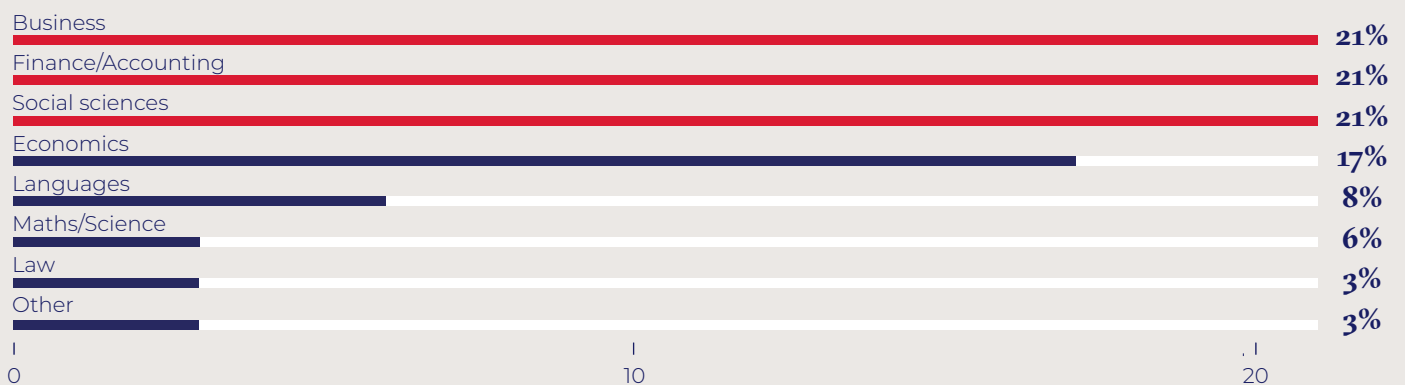
GMiM2024 class profile



Regional background



Undergraduate study discipline



* All nationalities are self-declared.

Employment statistics

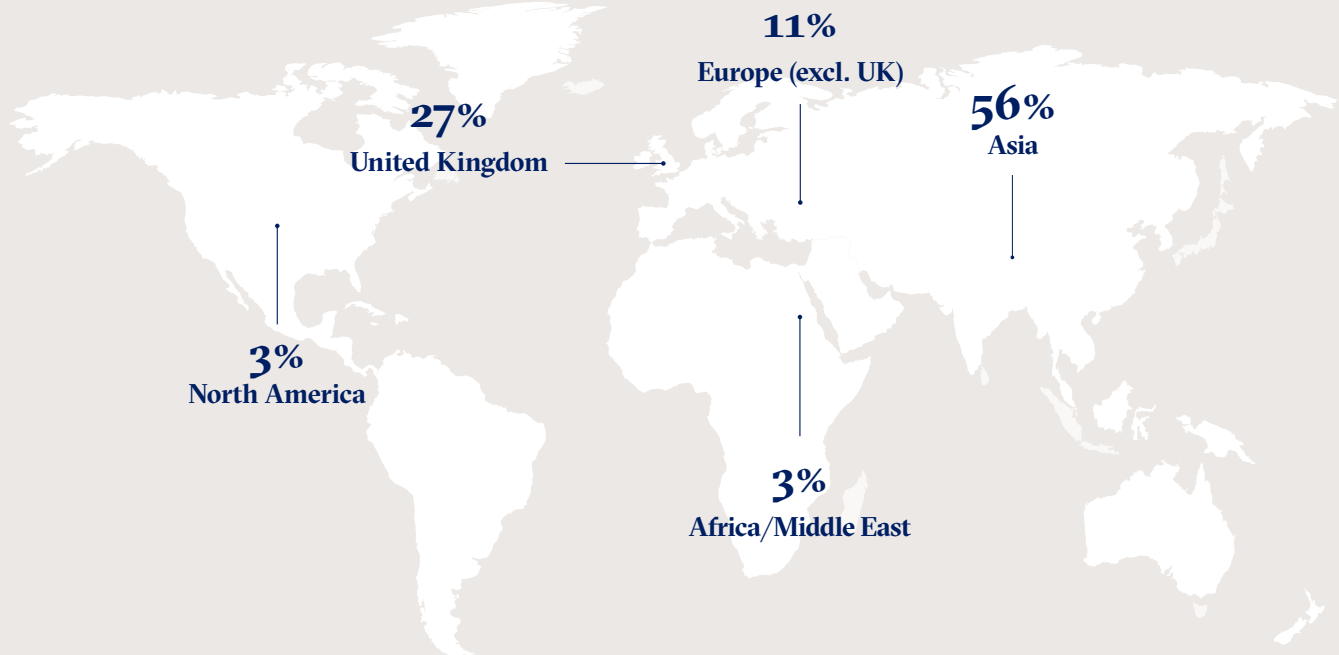
Sector destinations

100%
accepted an offer
within three months
of graduation

100%
reporting rate

CONSULTING	34%
FINANCE	42%
● Investment Banking	31%
● Investment Management	5%
● Private Equity	3%
● Venture Capital	3%
TECHNOLOGY	8%
● Internet/eCommerce	5%
● Fintech	3%
DIVERSIFIED	16%
● Consumer and Retail	5%
● Education and Training	5%
● Energy	3%
● Industrials	3%

Job location



Hiring companies

MiM

3HORIZONS
AB InBev
Accenture
Aegean Airlines
Alantra
Alibaba
AlixPartners
AlphaSights
Amazon
Antler
Aptia
Ardian
AREV Partners
Arrakis Finance
Artefact
Arthur D. Little
Atenor Ventures
Aulusius
Bain & Company
Bank of America
Black Swan Real Estate Capital
BlackRock
BMW Group
BNP Paribas
BookBook
Boston Consulting Group
bp
British Airways
BTIG Ltd
Bytedance
Capco
Capgemini Invent
Carbo
Cartier International
CDH Investment
CDIB Capital
Centrica Energy Trading
CFG Bank
China Life Insurance Group
China Merchants Bank
Christian Dior Couture
CICC
Citi
Clarix
Clipway
CLSA
Cube Infrastructure Managers
DAS Capital
Databook
Deutsche Bank
DNG

Doctolib
DPO&Co.
Draycott SCR
DWS Group
Edmond de Rothschild
EF Education First
Envision Energy
Equita
European Financial and Economic Centre
Expand Research
Fairgrove Partners
Fargo Wealth Group
Flummox
Freedom Holding Corp
FTI Consulting
FTI Delta
GG Capital
Goldman Sachs
Goldman Sachs Gao Hua Securities
Haitong International Securities Group Limited
Heidi Health
Hillhouse Capital
Hilti
Hive Founders
Holland & Barrett
HSBC
Humatica
Hunter Douglas
ICBC
IMG
Indian School of Business
ING Group
Initiator VC
Investindustrial
IQVIA
J.P. Morgan
JD.com
Jeebly
Jefferies
JP Morgan Chase
Kearney
L Catterton
L.E.K. Consulting
Lenovo
Macquarie Capital
Maersk
Mastercard
McKinsey & Company
Merkel
Metro Asset Management
Mild Orange

Millennium Capital Partners LLC
Moelis & Company
Morgan Stanley
Natixis
NVIDIA
OC&C Strategy Consultants
Oliver Wyman
PAI Partners
PEARL Infrastructure Capital
Pentland Brand
Pictet & Cie
PMP Strategy
Pontigo
Postal Savings Bank of China
Procter & Gamble
Publicis Sapient
Ralph Lauren
Ramboll Management Consulting
Reventus Power
Revolut
Richemont
Riverflex
Roland Berger
Rothschild & Co.
S&P Global
Sana Labs
Shopee
SilverMile Capital
Singulier
Spheres
Strategy&
SUSUN Group
Takeda
TD Bank Financial Group
TECTON Management AG
Tencent
The PSC
The Raine Group
The Taskforce on Nature-related Financial Disclosures
Total
Trilantic Europe
UBS
UniUni
Urban Company
Vicente & Partners
Xiaomi Technology
Zhongtai Securities Co., Ltd

Zopa
Zurich Insurance

GMiM

Advancy
Altman Solon
Apollo Global Management LLC
Bain & Company
Bank of America
Boston Consulting Group
Cargo Move
EF Education First
Goldman Sachs
Hitachi Energy
Houlihan Lokey
HSBC
Huatai Securities Co.
Humatica
Jaeger-LeCoultre
Jefferies
J.P. Morgan
LBA Branding
Lexham Capital Partners
Mastercard
Morgan Stanley
Oliver Wyman
Procter & Gamble
Shanghai Yingpao Education Technology Co., Ltd
Shopee
Taobao and Tmall Group
Xiaomi Technology
Yuanta Securities
Z Partners
ZS Associates

About the Career Centre

We want our students to develop skills, behaviours and strategies to manage their careers proactively. Our Career Centre experts support students as they shape their career goals.

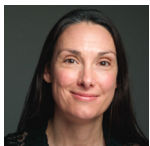
Our comprehensive career support involves

- **Career coaching and advising.** Coaches help you define a direction and maintain focus on your goals. Our sector advisors provide sector-specific advice to deepen your own research and share market trends.
- **Career learning.** A blended digital and in-person curriculum to move students' career skills to the next level and promote career progression.
- **Career opportunities.** Access to a wide range of career and networking opportunities, including over 200 employer events annually.



Specialist coaches and career advisors

The Career Centre comprises 45 permanent staff, most of whom have real-world coaching and commercial experience to help students achieve their career goals. Team members include:



Kira Hughes
Head of Graduate
Masters Careers



Daniel Lay
Head of Consulting
Careers



David Morris
Head of Technology
and Media Careers



Richard Bland
Head of Finance
Careers



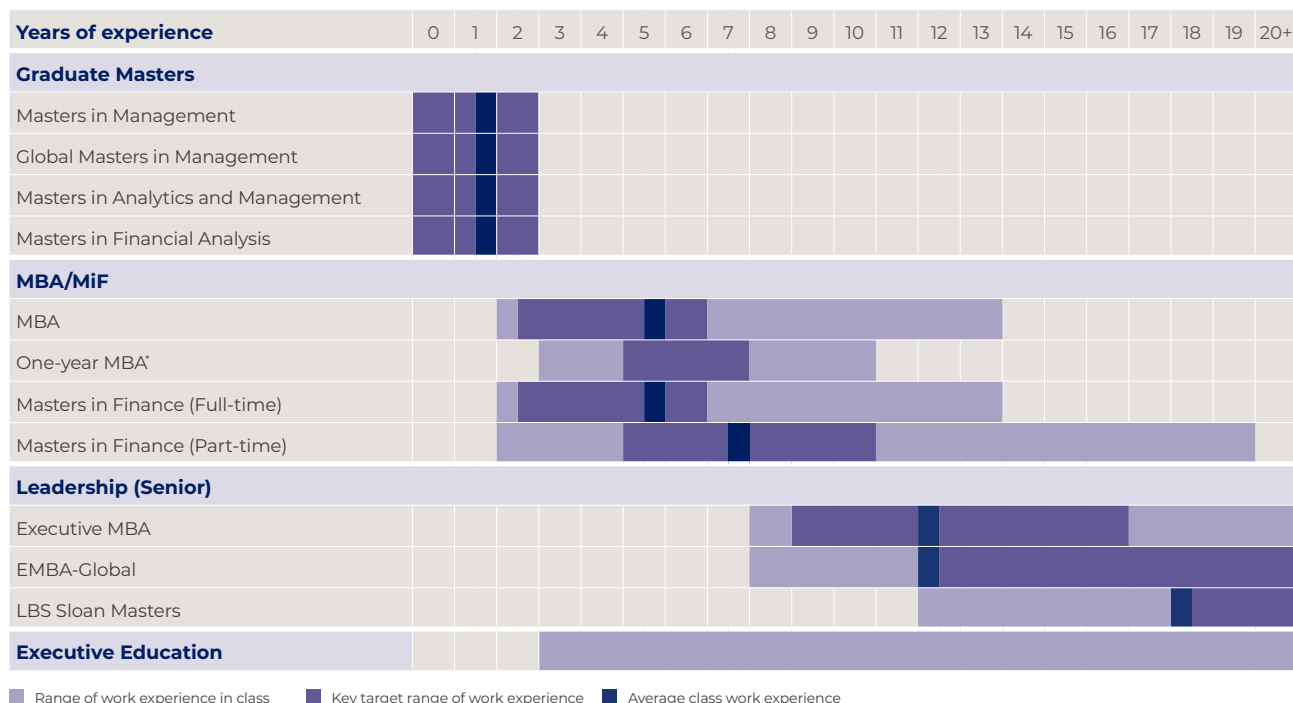
Alyona Segline
Head of Diversified
Careers



Osman Haneef
Institute of
Entrepreneurship
and Private Capital

Our programmes

London Business School can boost your capabilities and potential at every stage of your career.



* Available to those who have graduated three or more years ago with a Masters in Management or equivalent approved by EQUIS and/or AACSB or from the University of London.

Graduate Masters

Masters in Management

12-16 MONTHS | FULL-TIME | LONDON

For recent graduates with up to two years of full-time postgraduate work experience who want to kick-start a career in business.

Global Masters in Management

24 MONTHS | FULL-TIME | LONDON AND SHANGHAI

For recent graduates with up to two years of full-time postgraduate work experience. Strong interest in Asia and knowledge of Mandarin highly recommended, but not mandatory.

Masters in Analytics and Management

12-16 MONTHS | FULL-TIME | LONDON

For recent graduates with up to two years of postgraduate work experience, who are targeting a career in business and data analytics.

Masters in Financial Analysis

12-16 MONTHS | FULL-TIME | LONDON

For recent graduates with up to two years of full-time postgraduate work experience who are looking to embark on a career in finance.

Mid Career

MBA

15-21 MONTHS | FULL-TIME | LONDON

For individuals who are looking to make a vertical shift in their career path, change industry or job function, or develop an entrepreneurial toolkit.

One-year MBA

11 MONTHS | FULL-TIME | LONDON

For professionals with a masters in management looking to further their careers and take their entrepreneurial ideas further.

Masters in Finance (Full-time)

10-16 MONTHS | FULL-TIME | LONDON

For experienced financial professionals wishing to advance their career or change their area within finance.

Masters in Finance (Part-time)

22 MONTHS | PART-TIME | LONDON

For experienced financial professionals looking to further their career while still working.

Leadership (Senior)

Executive MBA

17-22 MONTHS | PART-TIME, IN-PERSON OR BLENDED | LONDON OR DUBAI

For those who want to accelerate their career into general management or move beyond their technical or functional specialism.

EMBA-Global

20 MONTHS | PART-TIME | LONDON AND NEW YORK

For dynamic, mid-career managers and professionals who are highly ambitious and have, or aspire to have, transnational responsibilities.

LBS Sloan Masters in Leadership and Strategy

12 MONTHS | FULL-TIME | LONDON

Designed to prepare experienced senior managers for their next career challenge.

Find out more

Masters Programmes

+44 (0)20 7000 7500
masters@london.edu

Executive Education

+44 (0)20 7000 7390
execinfo@london.edu

All admissions decisions are taken in accordance with best equal opportunities practice.

London
Business
School

London Business School
Regent's Park
London NW1 4SA
United Kingdom
Tel: +44 (0)20 7000 7000
london.edu

london.edu/mim
london.edu/gmim