

# Masters in Finance employment report

GRADUATING CLASS OF 2023



London  
Business  
School

## Introduction from the Head of Career Centre

I'm delighted to share that 89%\* of our 2023 Masters in Finance class secured job offers within four months of graduation.

This remarkable outcome is a testament to our students' exceptional talent, resilience and determination in navigating a job market marked by geopolitical instability, global economic uncertainty and evolving recruitment trends.

Our graduates will be making their mark around the world in 25 locations, with 51% choosing to begin their careers in the UK. As to be expected from a specialist Finance programme, 82% of the class will be applying their expertise in the Financial Services sector, with the other 18% choosing sectors such as Consulting, Consumer & Retail, Energy, Industrials and Technology.

Wherever our graduates have embarked on their careers and whichever industries they are enriching, we extend our congratulations and best wishes for their continued success. We look forward to watching their career journeys unfold and seeing the impact they will make on the way the world does business.



**Zoe McLoughlin**

Executive Director of Career Centre  
London Business School



**“Without exaggeration, I can say that attending London Business School was the best thing for me both professionally and personally. My current role requires a degree of technical and professional sophistication that I would not have been ready for without the knowledge I gained throughout my time at LBS. Spending time in another culture and making friends from other countries greatly expanded my point of view and overall shaped me into a well-rounded person.”**

**Chris Rance** MiFFT2023

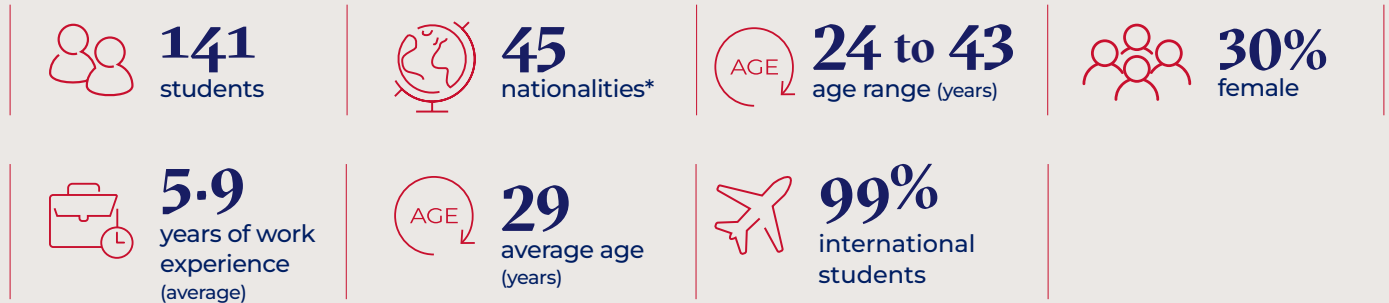
Investment Banking Associate, Santander Corporate & Investment Banking



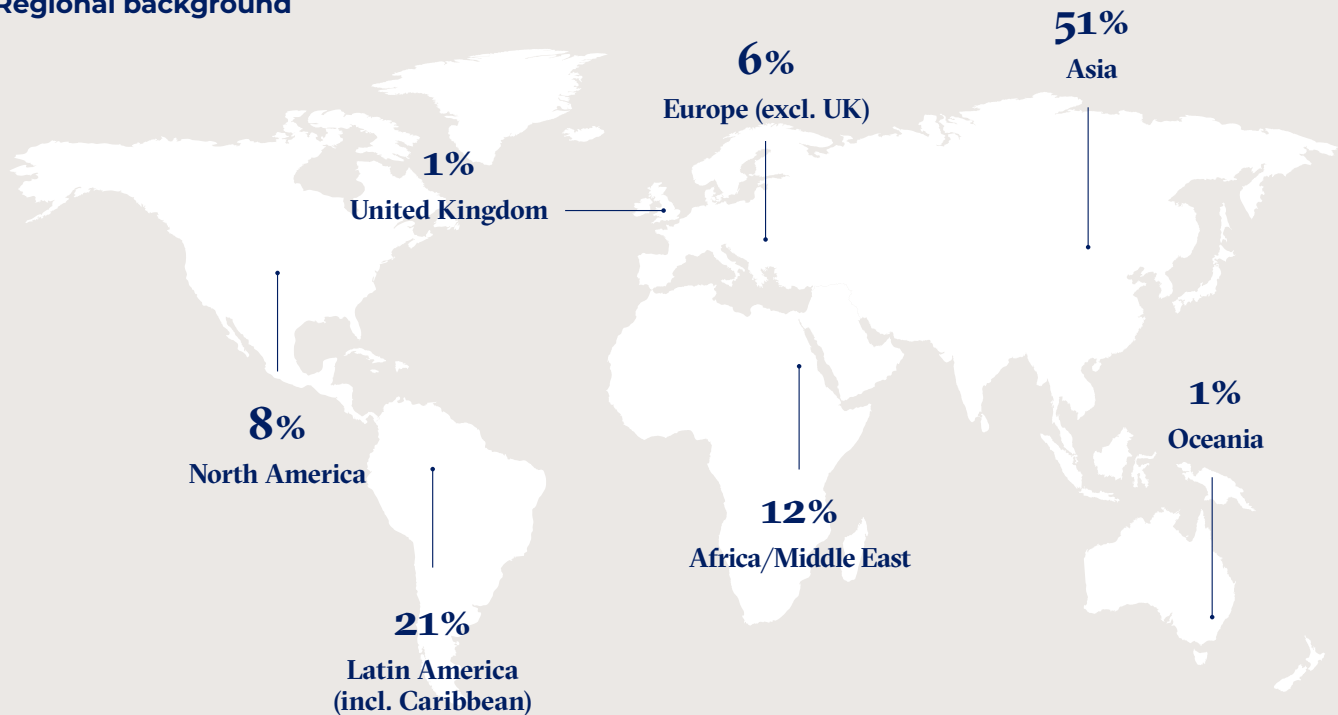
\* We officially report on the three-month employment rate which is 86%.

The four-month employment rate is calculated in compliance with MBA Career Services and Employer Alliance (MBA CSEA) reporting standards. Students returning to their sponsoring employers are not included in the four-month rate.

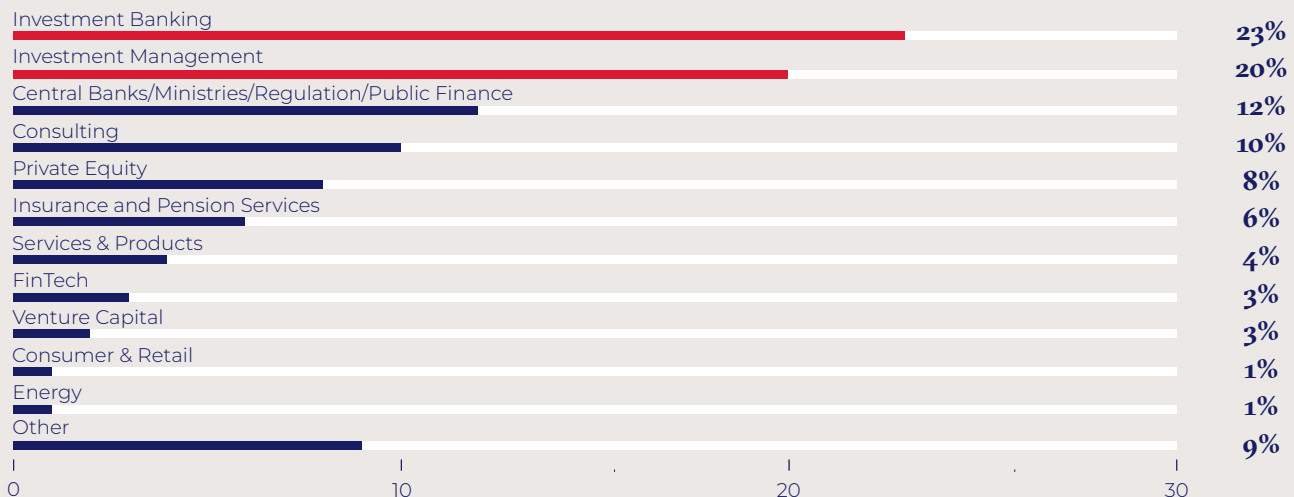
## MiFFT2023 graduating class profile



### Regional background



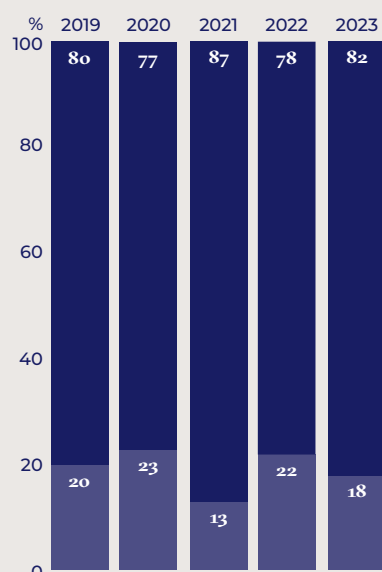
### Pre-LBS professional background



Our admissions decisions are taken in accordance with best equal opportunities practice.

\* All nationalities are self-declared.

## Sector destinations



### Sector breakdown 2023

FINANCIAL SERVICES		82%
● Investment Banking		30%
● Investment Management		21%
● Central Banks/Ministries/Regulation/Public Finance		11%
● Private Equity		9%
● Insurance & Pension Services		6%
● Venture Capital		2%
● Real Estate		1%
● Retail Banking		1%
● Services & Products		1%
NON-FINANCE		18%
● Diversified*		11%
● Technology**		4%
● Consulting		3%

# 61%

of our students who accepted an offer received other compensation and bonuses\*\*\*

# 82

companies hired MiFFT2023 students for full-time positions

## Salaries and compensations

	Count	UK Pounds			US Dollars †			International Dollars ††		
		Mean	Min	Max	Mean	Min	Max	Mean	Min	Max
<b>TOTAL</b>	<b>50</b>	<b>£77,955</b>	<b>£22,200</b>	<b>£140,000</b>	<b>\$97,348</b>	<b>\$28,031</b>	<b>\$178,092</b>	<b>\$130,247</b>	<b>\$33,381</b>	<b>\$260,455</b>
Other guaranteed compensation	31	£42,949	£4,000	£188,806	\$54,016	\$5,051	\$240,000	\$67,393	\$7,808	\$240,000
<b>Financial Services</b>	<b>36</b>	<b>£77,868</b>	<b>£22,200</b>	<b>£140,000</b>	<b>\$97,220</b>	<b>\$28,031</b>	<b>\$178,092</b>	<b>\$127,117</b>	<b>\$33,381</b>	<b>\$260,455</b>
Other guaranteed compensation	20	£55,316	£5,870	£188,806	\$69,594	\$7,349	\$240,000	\$84,721	\$7,808	\$240,000
<b>Non-Finance</b>	<b>14</b>	<b>£78,176</b>	<b>£25,000</b>	<b>£125,000</b>	<b>\$97,678</b>	<b>\$31,566</b>	<b>\$152,690</b>	<b>\$138,293</b>	<b>\$94,447</b>	<b>\$222,153</b>
Other guaranteed compensation	11	£20,463	£4,000	£60,000	\$25,693	\$5,051	\$75,450	\$35,888	\$9,813	\$89,852

\* Diversified includes: Consumer & Retail, Energy, Industrials.

\*\* Technology includes: EdTech, FinTech.

\*\*\* Of students for whom we hold salary information.

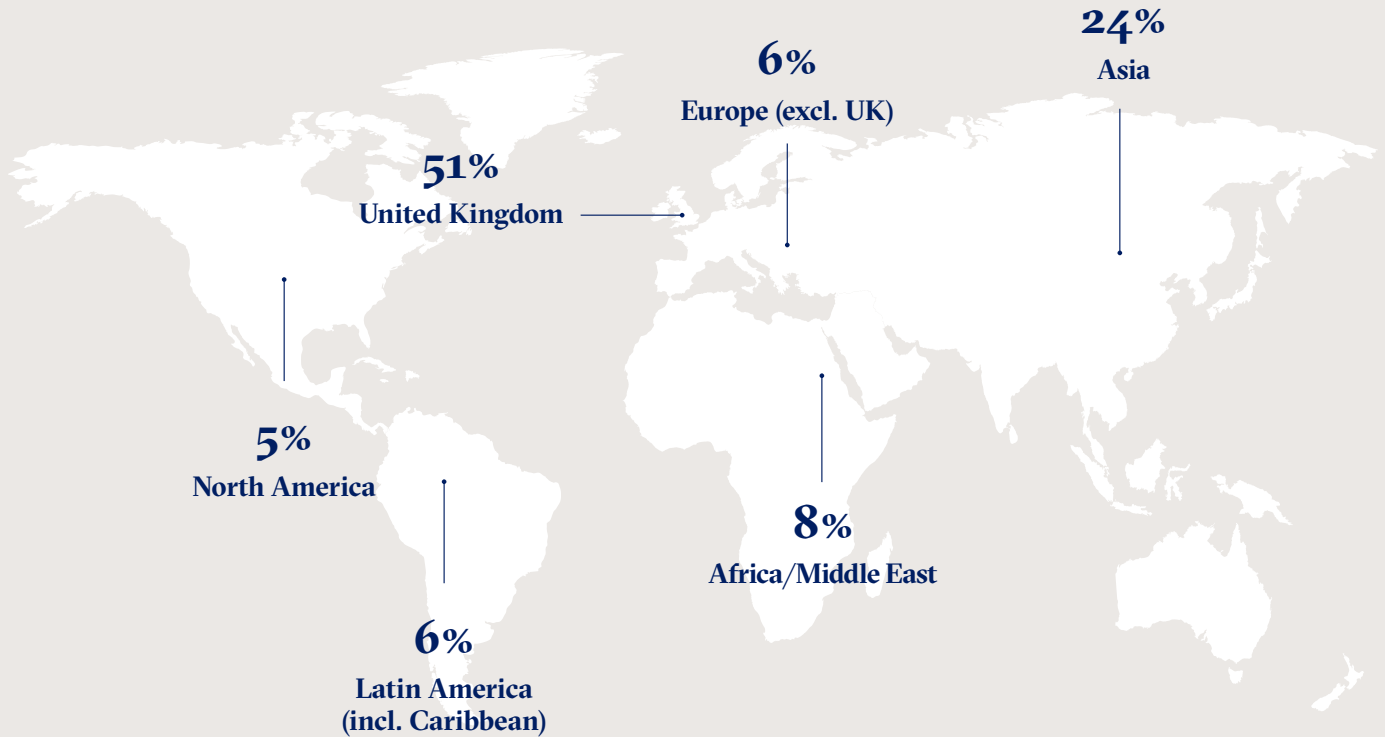
† Conversion rates as per date of offer.

†† Purchasing power parity (PPP) included due to the high number of students who have salaries in non-US dollar currencies. The World Bank's implied PPP rate of exchange was used to equalise the purchasing power across economies.

Other compensation includes sign-on and end-of-year bonus where we have sufficient data.

Salary table represents offer accepted students that shared their salary information (57% of total offer accepted students). Salary data does not include sponsored or self-employed students, in accordance with MBA CSEA guidelines.

## Job location



### MiFFT2023 graduates went to work at organisations in the following 25 locations:

- Canada
- Chile
- China Mainland
- Colombia
- Germany
- Guatemala
- Hong Kong SAR
- India
- Indonesia
- Ireland
- Italy
- Japan
- Kenya
- Mexico
- Netherlands
- Philippines
- Saudi Arabia
- Singapore
- South Korea
- Spain
- Thailand
- Turkey
- United Arab Emirates
- United Kingdom
- United States (USA)



**"In my current role, I frequently explain technical concepts to shareholders and stakeholders from various backgrounds. Being part of a study group at LBS sharpened my ability to explain complex ideas to people from diverse backgrounds in a simple and clear way. This skill has allowed me to deliver concise analyses that support decision-making in a fast-paced environment."**

**Tondani Netshivha** MiFFT2023  
Associate, RB&A Partners

## Career switchers



**58%**  
switched location  
upon graduation

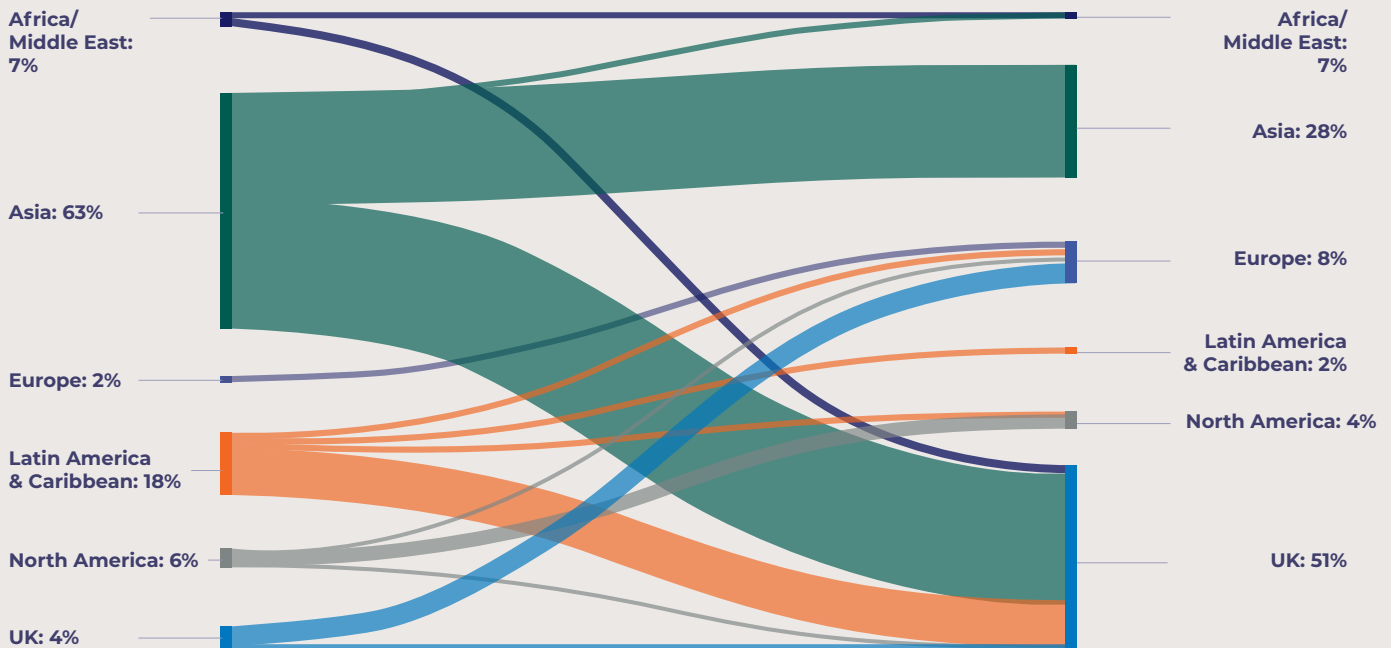


**62%**  
switched sector  
upon graduation



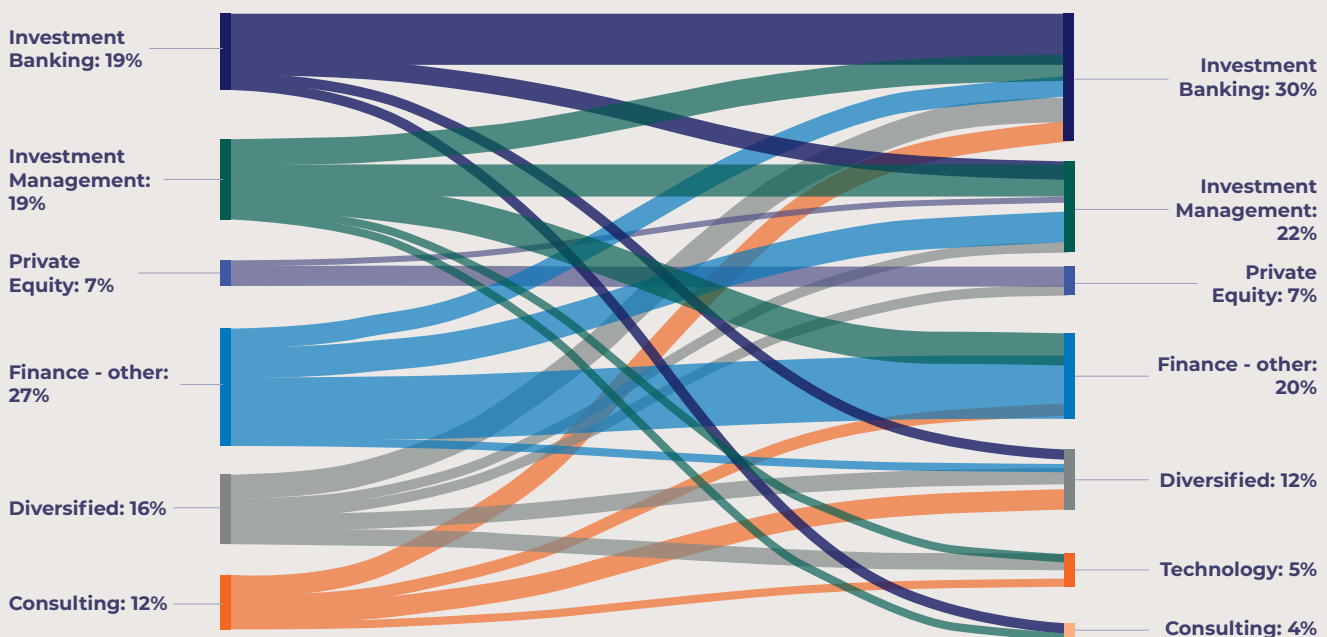
**36%**  
switched location  
and sector  
upon graduation

## Location switchers



The stats represent 59 students who have provided both their pre and post LBS employment location.

## Sub-sector switchers



The stats represent 63 students who have provided both their pre and post LBS employment sector.

## Hiring employers

Agtelligence	Financial Services Agency, Government of Japan	MUFG Bank
Akari Trading	Firebird Management LLC	Munich Re
Akereos Capital	Fitch Ratings	National Pension Service
andwis Group	Freshstream	Nippon Life Insurance Company
Aramco	Fubon Life Insurance	Ntropy Network, Inc.
Asian Infrastructure Investment Bank	Genesis Investment Management	Nuveen Investments
Aviron Investments	GF Holdings (Hong Kong) Corporation Limited	Oliver Wyman
Balanz Capital LLP	GoldenPeaks Capital	Perbak Capital Partners
Banco De Mexico	Goldman Sachs	Permodalan Nasional Berhad
Bank Indonesia	Greenlight Capital	PIMCO
Bank of America	Grupo Apolo	Protección S.A.
Bank of Japan	Hana Financial Investment	Reserve Bank of India
Bank of Korea	Hannam & Partners	RWE
Barclays	Hortifrut	RWE Renewables
BCI Capital	HSBC	Santander
Bloomberg	InCred Asset Management & Alternative Investments	Santander CIB
BNP Paribas	Informa	Saudi Industrial Development Fund (SIDF)
BP Pension Fund	ING Group	Selwood Asset Management
Brown Advisory	Islamic Trade Finance Corporation (ITFC)	SMBC
Capital Market Authority	Jade Advisors	SMBC Nikko Securities Inc.
Central Bank of Oman	Jefferies	Societe Generale
Cerberus Capital Management	Jefferson Capital	Sozvezdie Capital
Cerved Rating Agency	JP Morgan Chase	Speedinvest
Chenavari Investment Managers	Kanou Capital LLP	Sumitomo Mitsui DS Asset Management
Citi	Korea Development Bank	Swoop Funding
CloudArch Ventures Group	LGT Venture Philanthropy	Symmetry Investments
Coca-Cola Andina	Lightsource BP	TD Securities
Consilium Capital	Lingjun Investment	Terra Firma Capital Partners
Corso Inversiones SA	LiveFlow	Thailand Securities and Exchange Commission
DC Advisory Partners	Lloyds Banking Group	Unilever
Deloitte	Marlborough Partners	Veld Capital
Delphos International	McKinsey & Company	Victory Hill Capital Advisors LLP
Dimensional Fund Advisors	Moelis & Company	Waverton Investment Management
Emirates Water and Electricity Company	Moody's	YF Life Insurance International Limited
Equation Capital		

## Internships

To aid their professional transitions, 50 students undertook internships during their programme.

The firms included investment banking, private equity, investment management, venture capital, information technology and services, FinTech and industrials, as well as healthcare and healthtech organisations. Students interned across Europe, Asia, Africa, the UAE, the UK and the USA.

The firms they worked at are listed below:

Ifs Wealth	Citi	LiveFlow
Actis	Consilium Capital Limited	Moelis & Company
Aerius Associates	Credit Suisse	MUFG Bank
Akereos Capital	DealGlobe	Ntropy Network, Inc.
AllianceBernstein	Duke Street	Oper
Antler	Elara Capital	Perbak Capital Partners
Artis Finance	Emirates Water and Electricity Company	PIMCO
Astronome AI	Farnam Entrepreneurial Succession	Rosedge Capital
Balanz Capital LLP	First Circle Capital	Selwood Asset Management
Bank of America	FPE Capital	Semble
Bank of China (UK) Limited	Goldman Sachs	Tico Capital
BCI Capital	Greenlight Capital	TLG Capital
Cederberg Capital	Hannam & Partners	Tourbillon Investment Management
Chenavari Investment Managers	Hayfin	Victory Hill Capital Advisors LLP
Chiltern Capital	Investcorp	
Chiltern Street Capital	Johnson & Johnson	

## About the Career Centre

Our purpose is to enhance your unique, lifelong career impact at a personal, organisational or societal level. We support you to develop skills, behaviours and strategies to manage your career proactively.

### Our comprehensive career support involves:

- **Career coaching and advising.** Career coaches help you identify your motivation, skills and aspirations and share insights on career management. Sector advisors share employment market knowledge – global, regional and sector trends on hiring practices and processes.
- **Career learning.** A blended digital and in-person curriculum to move your career skills to the next level across key personal development areas.
- **Career opportunities.** Access to a wide range of career and networking opportunities, including over 200 employer events annually.



**"As I've transitioned from consulting to corporate finance, the Masters in Finance has bolstered my technical knowledge in accounting and financial analysis. Tailoring electives to my interests has helped me cultivate a strategic mindset crucial for excelling in my current role. Through opportunities such as club leadership and international experiences, the programme has provided ample avenues for leadership and personal development."**

Grace Chan MiFFT2023  
Financial Management Associate, Citi

81%

of the MiFFT2023  
students engaged  
with Career Centre

125+

workshops offered during  
2022/23 academic year

3,660+

employers partnered  
with LBS

1,550+

job opportunities  
for MiF students  
advertised through  
LBS in 2022/23

## Specialist career advisors

The Career Centre comprises more than 40 permanent staff, many of whom have real-world finance experience, to help students achieve their career goals. Team members include:



**Anne Alaoui**  
Head of MBA and  
Masters in Finance  
Careers



**Lusine Magakian**  
Masters in Finance  
Career Lead



**John Moore**  
Career Coach



**Alexandra Leahu**  
Sector Lead, Banking



**Tim Mann**  
Sector Lead,  
Asset Management

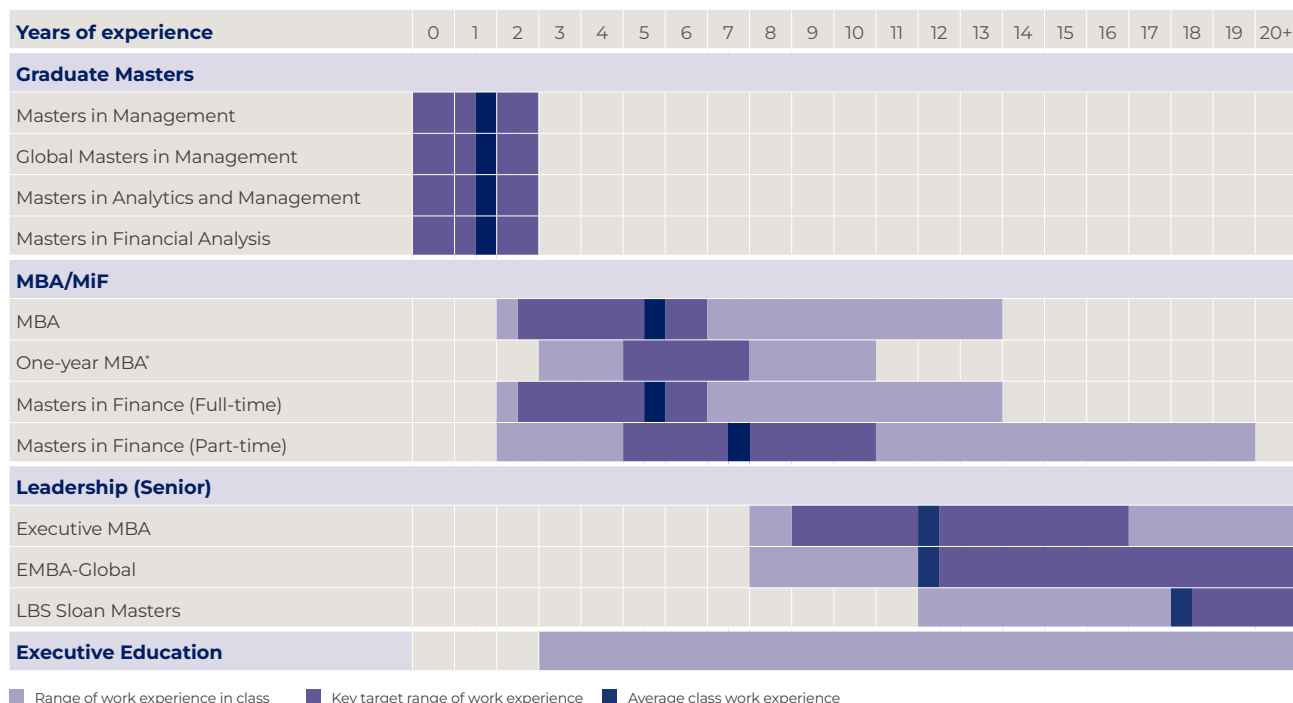


**Richard Bland**  
Head of Finance  
Careers and Sector  
Lead, Private Equity



## Our programmes

London Business School can boost your capabilities and potential at every stage of your career.



\* Available to those who graduated three or more years ago with a Masters in Management or equivalent approved by EQUIS and/or AACSB or from the University of London.

### Graduate Masters

#### Masters in Management

12-16 MONTHS | FULL-TIME | LONDON

For recent graduates with up to two years of full-time postgraduate work experience who want to kick-start a career in business.

#### Global Masters in Management

24 MONTHS | FULL-TIME | LONDON AND SHANGHAI

For recent graduates with up to two years of full-time postgraduate work experience. Strong interest in Asia and knowledge of Mandarin highly recommended, but not mandatory.

#### Masters in Analytics and Management

12-16 MONTHS | FULL-TIME | LONDON

For recent graduates with up to two years of postgraduate work experience, who are targeting a career in business and data analytics.

#### Masters in Financial Analysis

12-16 MONTHS | FULL-TIME | LONDON

For recent graduates with up to two years of full-time postgraduate work experience who are looking to embark on a career in finance.

### Mid Career

#### MBA

15-21 MONTHS | FULL-TIME | LONDON

For individuals who are looking to make a vertical shift in their career path, change industry or job function, or develop an entrepreneurial toolkit.

#### One-year MBA

11 MONTHS | FULL-TIME | LONDON

For professionals with a masters in management looking to further their careers and take their entrepreneurial ideas further.

#### Masters in Finance (Full-time)

10-16 MONTHS | FULL-TIME | LONDON

For experienced financial professionals wishing to advance their career or change their area within finance.

#### Masters in Finance (Part-time)

22 MONTHS | PART-TIME | LONDON

For experienced financial professionals looking to further their career while still working.

### Leadership (Senior)

#### Executive MBA

20 MONTHS | PART-TIME | LONDON OR DUBAI

For those who want to accelerate their career into general management or move beyond their technical or functional specialism.

#### EMBA-Global

20 MONTHS | PART-TIME | LONDON AND NEW YORK

For dynamic, mid-career managers and professionals who are highly ambitious and have, or aspire to have, transnational responsibilities.

#### LBS Sloan Masters in Leadership and Strategy

12 MONTHS | FULL-TIME | LONDON

Designed to prepare experienced senior managers for their next career challenge.

#### Find out more

##### Masters Programmes

+44 (0)20 7000 7500  
masters@london.edu

##### Executive Education

+44 (0)20 7000 7390  
execinfo@london.edu

All admissions decisions are taken in accordance with best equal opportunities practice.

# London Business School

---

London Business School  
Regent's Park  
London NW1 4SA  
United Kingdom  
Tel: +44 (0)20 7000 7000  
london.edu